

Leicester

Enhanced Bus Partnership Scheme 2022 - 2025

1 May 2022



Leicester
City Council



leicester buses
www.leicesterbuses.co.uk

Definitions

1985 Act	Transport Act 1985
2000 Act	Transport Act 2000
2017 Act	Bus Services Act 2017
EP Plan	The Leicester Enhanced Partnership Plan sets out the rationale for a range of costed interventions required to meet a set of aims, objectives and targets over an eight-year period. It is not binding on any party. Its content is the same as the Leicester Bus Services Improvement Plan which was published online on 31 October 2021.
EP Scheme	The Leicester Enhanced Partnership Scheme is an agreed set of actions approved by the EP Board for implementation over a given time period with a given set of resources.
EP Scheme Variation	A formal variation of the relevant Enhanced Partnership Scheme(s) as a result of the mechanism set out in the governance arrangements of the scheme, which will then constitute a formal variation of the relevant scheme for the purposes of s.138E(1) of the 2000 Act.
EP Forum	The committee of all Leicester Bus Operators, the City Council, employer representations, Bus User Panel Chair, Transport Focus and other stakeholders responsible for considering all issues affecting the Leicester Enhanced Partnership , and making recommendations to the Leicester Enhanced Partnership Board in line with the Leicester Enhanced Partnership Plan
EP Board	The committee of selected Leicester Bus Operator representatives, City Council officers considering recommendations put forward by the Leicester EP Forum and making recommendations to the City Council including specific Enhanced Partnership Scheme Variations using the mechanism in section 6.
EP	Enhanced Partnership. The overall umbrella work term for the EP Plan, EP Scheme, EP Board and EP Forum.
City Council	Leicester City Council. The Council is the the Enhanced Partnership, Plan and Scheme co-ordinator
Bus Operators	All Large Operators, Medium Operators and Small Operators running Qualifying Bus Services taken collectively
Operators : Large, Medium, Small	Any single Bus Operator with registered commercial mileage representing the following proportions of total registered mileage for Qualifying Bus Services: Large: equal to or greater than 10% Medium: equal to or greater than 5%, but less than 10% Small: less than 5%. For the avoidance of doubt, a list of Large, Medium and Small Operators will be published at the start of each financial year.
Qualifying Bus Services	A registered local bus service with one or more stopping place within the geographical area of the Enhanced Partnership, with the exception of: any schools or works registered local bus service not eligible for Bus Service Operators Grant any cross-boundary registered local bus service with less than 10% of its registered mileage within the Enhanced Partnership area any service operating with a weekday daytime (8am – 6pm) frequency averaging more than every 60 minutes AND more than 50% of route mileage outside of the EP Scheme area. any services operated under section 22 of the 1985 Act any registered local bus service which is an excursion or tour For the avoidance of doubt, a list of Qualifying Bus Services will be published at the start of each City Council financial year.
Non-Qualifying Services	Services excluded from classification as Qualifying Bus Services.
Facilities	Those facilities referred to in the Enhanced Partnership Scheme which shall be deemed such for the purposes of s.138D(1) of the 2000 Act.
Measures	Those measures referred to in the Enhanced Partnership Scheme which shall be deemed as such for the purposes of s.138D(2) of the 2000 Act
Requirements	Those requirements placed upon Bus Operators identified as such within the Enhanced Partnership Scheme document, which shall be deemed as such for the purposes of s.138C 2017 Act.
Flexi Scheme	Leicester all-operator integrated ticketing scheme
Flexi Scheme area	Area over which the Flexi all-operator ticketing scheme applies
Mainlines	Commercially operated route groups along a common road corridor - as defined within the EP Plan

Content

1. This Enhanced Partnership Scheme is made by Leicester City Council in accordance with section 138G(1) of the Transport Act 2000.
2. In accordance with statutory requirements in section 138A-138H of the Transport Act 2000, this Scheme document sets out:
 - a. an introduction to Enhanced Partnerships
 - b. the scope of the Enhanced Partnership Scheme
 - c. the obligations on Leicester City Council as the Local Transport Authority
 - d. the requirements on all bus Operators in Leicester of locally registered bus services.
 - e. governance arrangements of the Enhanced Partnership Scheme.
 - f. other relevant aspects

Introduction

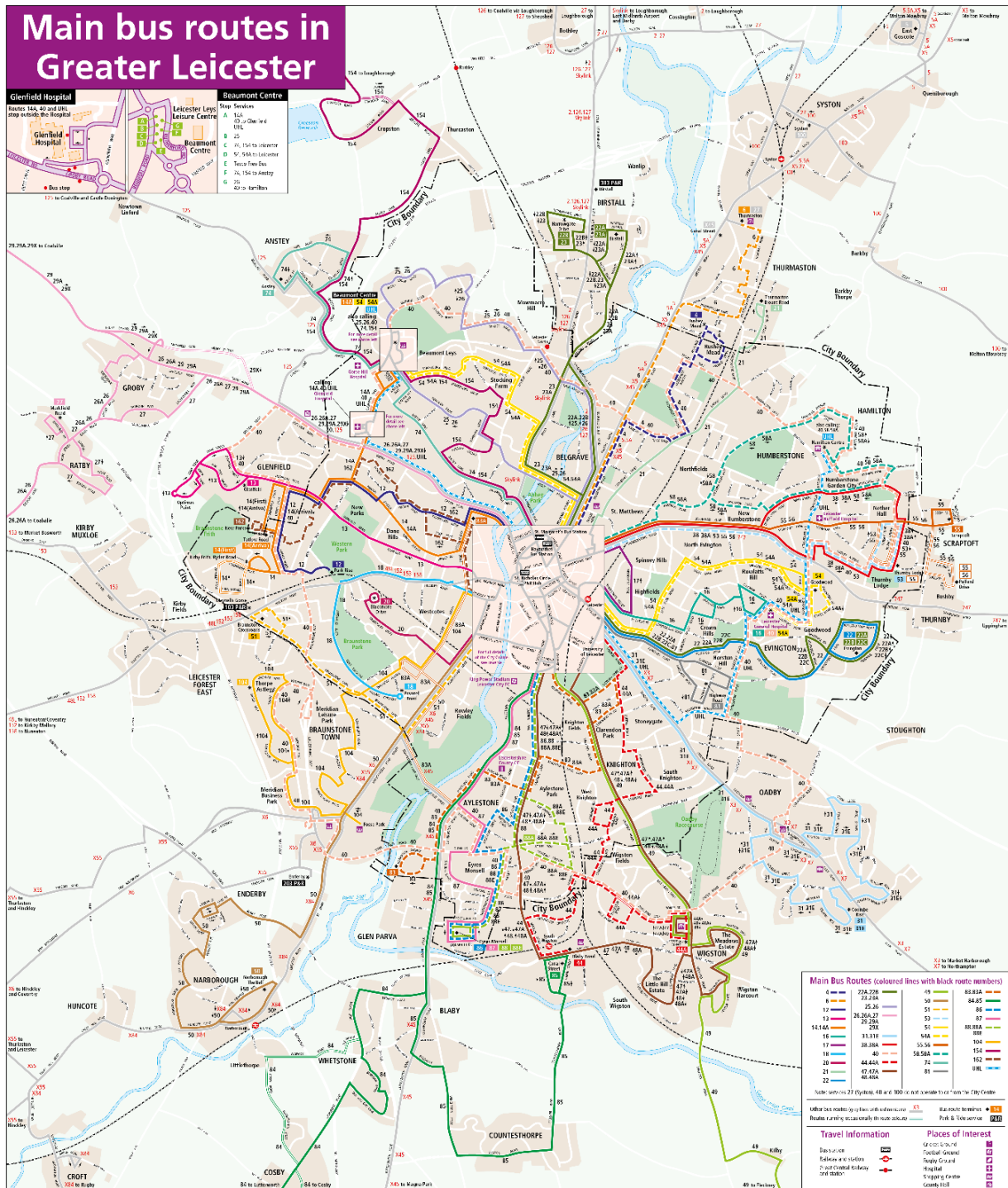
3. The Enhanced Partnership Scheme can only be put in place if an associated Enhanced Partnership Plan has been made. Therefore, this EP Scheme document should be considered alongside its associated EP Plan.
4. When both the EP Scheme and EP Plan are made, they will be published on:
www.leicester.gov.uk/your-council/policies-plans-and-strategies/transport-and-streets/enhanced-bus-partnership-scheme/
5. A summary of both the EP Plan and EP Scheme, together with regular progress updates, will also be published on the partnership website:
www.leicesterbuses.co.uk
6. The EP Scheme has been jointly developed by Leicester City Council and those bus operators providing local bus services in the EP Scheme area. It sets out obligations and requirements on both the City Council and operators of local services in order to achieve improvements which aim to deliver the objectives of the associated EP Plan.

7. The EP Plan sets out a range of costed interventions required to meet a set of aims, objectives and targets over an eight-year period from 1 May 2022 to 31 March 2030. It is not binding on any party.
8. The EP Scheme is based on financial and staff resources available and known at time of scheme consultation. It is for three years 1 May 2022 to 31 March 2025. Once approved it is binding on all parties.
9. Future additional resources to further deliver the EP Plan can be brought into play at a later date through a variation to the EP Scheme, as detailed in the Governance section below.
10. Only partial funding for the EP Plan was confirmed at time of EP Scheme approval. The range of interventions set out in the EP Scheme are all consistent with the aims and objectives of the EP Plan.
11. The targets set out in the EP Plan assume full funding. Revised targets for the EP Scheme, based on existing funding streams, are set out in the final section of this EP Scheme.
12. It is hoped that further funds will be available over the coming years to expand the current EP Scheme, which will require these targets to be amended as the EP Scheme is revised accordingly.

Scope of the Scheme

Description of Geographical Coverage

13. The EP Scheme will support the improvement of all local bus services operating across the whole of the Leicester City Council geographical area. This boundary is the same as the EP Plan boundary and is shown as the 'City boundary' in the route network map below.



14. There is geographical overlap with the Leicestershire Enhanced Partnership Plan and Scheme in relation to ticketing. For operational reasons this is dealt with at a Leicester Urban Area level, shown by the whole map above. However, obligations under the EP Scheme relate only to the City Council area.

15. Similarly, obligations in relation to cross-boundary services are aligned with the Leicestershire EP Scheme and EP Plan, but relate only to the City Council area for the purposes of this EP Scheme

Commencement Date

16. The EP Plan and EP Scheme are made on 14 April 2022 and come into effect on 1 May 2022.

17. The EP Scheme has an end date of 31 March 2025 but will be reviewed by Leicester City Council annually, in conjunction with all local bus operators who together will make the EP Board.

18. This review will take in to account feedback from the wider EP Forum – see Governance section below.

Exempted Services

19. The following local services are exempt from the requirements of the EP Scheme:

- a. any schools or works registered local bus service not eligible for Bus Service Operators Grant
- b. any cross-boundary registered local bus service with less than 10% of its registered mileage within the Enhanced Partnership area
- c. any service operating with a weekday daytime (8am – 6pm) frequency averaging more than every 60 minutes AND more than 50% of route mileage outside of the EP Scheme area.
- d. any services operated under section 22 of the 1985 Act
- e. any registered local bus service which is an excursion or tour

Council Obligations - Facilities

20. Leicester City Council is a unitary authority and as such will be responsible in full for provision of the following facilities.

Bus Lanes and Bus Gates

- 21. The Council will provide and maintain existing bus lanes and bus gates detailed in Annex 1 throughout the period of the EP Scheme.
- 22. The Council commits to the full design and consultation of the proposed new bus lanes and bus gates shown in Annex 2 by not later than 31 March 2023.
- 23. The Council commits to fund and implement those new bus lanes and bus gates shown in Annex 2 by no later than 31 March 2025, provided they have been fully approved.

Red Routes

- 24. The Council shall review the existing temporary red route scheme shown in Annex 3 and make permanent by 1 September 2022, subject to full approval.
- 25. The Council shall review the case for red routes on those areas shown in Annex 4 by 31st March 2023.

Signalised Junction Priority and Smart Signalling

- 26. The Council will undertake a review by 31st March 2023 to upgrade the Area Traffic Control centre and integrate with real time bus data to allow traffic signal priority at all relevant signalised junctions.
- 27. The Council will seek investment opportunities throughout the period of this EP Scheme to carry out the recommendations of this review.

Bus Shelters

- 28. The Council will provide bus shelters at locations listed in Annex 5 by 31 April 2023, subject to resident consultation, highways and planning approval.

29. These will be supplied and maintained for the period of the EP scheme to the standard specified in Annex 6.
30. The Council will reserve the right to remove or relocate any of these shelters, subject to notification to the EP Board.

Bus Stop Totems

31. The Council will install bus stop totems at locations listed in Annex 7 by 1 April 2023, subject to resident consultation and highways approval.
32. These each include a four-sided timetable unit, branded bus stop flag and clearway order plate.
33. The Council shall clean and maintain these totems every quarter from their date of installation until the end of the EP Scheme period.
34. The Council will reserve the right to remove or relocate any of these totems, subject to notification to the EP Board.

Bus Stations

35. The Council will provide and maintain bus stations and their associated infrastructure as detailed in annex 8:
 - a. Haymarket Bus Station – for the duration of the EP Scheme
 - b. New St Margaret's Bus Station – from its opening date before 1 April 2023 to the end of the EP Scheme period.

Park and Ride Sites

36. The Council will provide and maintain the following existing secure and illuminated park and ride facilities for use by specified contracted local bus services for the EP Scheme period.
 - a. Meynells Gorse Park and Ride
 - b. Enderby Park and Ride
 - c. Birstall Park and Ride

37. The Council will provide and maintain the following secure and illuminated new park and ride facilities for free use by any registered local bus service, from 1 April 2023 to the end of the EP Scheme period, subject to full consultation and highways approval being given.
- a. Beaumont Leys Park and Ride
 - b. General Hospital Park and Ride.
38. There will be no ongoing charge to operators for use of these two new facilities.

Real Time Passenger Information

39. The Council will ensure maintenance of the existing real time information system as detailed in Annex 9 for the EP Scheme period.
40. The Council will maintain the existing real time passenger information screens as shown in Annex 10 for the EP Scheme period. This includes all relevant monitoring, communications costs, data input and update, power supply and damage relating to vandalism and road traffic accidents.
41. The Council will install an additional 650 real-time passenger information screens at bus stops from the list shown in Annex 11 by 31st March 2023. These will be maintained for the rest of the EP scheme period.
42. There will be no charge to operators for the management and ongoing operational costs of this system and its display estate.
43. The Council reserves the right to remove or relocate any real time screen subject to consultation with the EP Board

Partnership Website

44. The Council will secure the design, procurement and launch of a new 'Leicester Buses' partnership website from 1 May 2022 and maintain this for the rest of the EP Scheme period.
45. This will be developed in stages from 1 May 2022 to 31 April 2023 and include, but not be limited to:
- a. service timetables for all registered local bus services in the EP Scheme area

- b. maps to illustrate main towns, villages and road served, and a network map
 - c. journey planning
 - d. fares information
 - e. mobile ticket purchasing functionality
 - f. news and events information
 - g. access to real time information
 - h. customer Charter
 - i. summary details of the Enhanced Partnership Plan and Scheme
46. There will be no ongoing charge to operators for the management of this website.
47. The EP Forum and Board will review the website annually throughout the EP Scheme period.

Council Obligations– Measures

48. Leicester City Council is a unitary authority and as such will be responsible in full for the following measures.

Bus Lane Enforcement

49. The City Council will use its discretionary powers granted in the Traffic Management Act 2004 to enforce bus lanes and bus gates with CCTV equipment as listed under Annex 12, for the whole period of EP Scheme
50. A programme for new enforcement cameras on other proposed new bus lanes and bus gates is also shown Annex 13. These will be implemented by 31 March 2024, subject to statutory consultation and approval of these new facilities and fully used until the end of the EP Scheme period
51. A report showing the effectiveness of these cameras in relation to traffic regulation order violation will be provided to the EP Board annually.
52. There will be no ongoing charge to operators for the management and maintenance of this enforcement system and its camera estate.

Moving Traffic Offences

53. The Council will undertake a review by 31 March 2023 of the potential for local enforcement of moving traffic offences, other than those related to bus lanes and bus gate, permitted by new legislation.

Managing Roadworks

54. The Council will formalise a protocol with local bus operators to minimise disruption to local bus services from both planned and emergency roadworks by 1 September 2022.

55. This will include liaison with bus operators to ensure that the co-ordination of works across the network minimises disruption, as well as setting out their processes and procedures for the provision and management of street works permits in the EP Scheme area.

56. It will also include a commitment for the Council to give all bus operators a minimum of 7-days notice of planned roadworks on the 'Mainlines network' shown Annex 14.

Fare Subsidy

57. The Council will provide funding and make arrangements to reimburse bus operators for the following discretionary discounted fares targeted for the EP Scheme period

- a. half fare bus travel for the elderly residents - weekday morning peak before 0930 hrs and between 2300-2359 hrs on weekdays.
- b. free travel for disabled residents - weekday morning peak before 0930 hrs and between 2300-2359 hrs on weekdays.
- c. unemployed discount – half-fare for any adult on-bus ticket for residents who are unemployed.

58. Each discount scheme will be subject to a separate annually updated reimbursement agreement with the operators.

Network Branding

59. The Council will co-ordinate and fully resource the roll-out of 'Leicester Buses' network branding across the platforms detailed in Annex 15, to the agreed design guide, for the whole of the EP scheme period

Network Promotions

60. The Council will co-ordinate a programme of at least two 'Leicester Buses' themed promotions each year of the EP Scheme. The themes, promotional resource and delivery method shall be decided by the EP Board, with input from the EP Forum.

61. The Council will allocate media space within the bus stations, bus stop totems and bus shelter cases (outside the City Centre) for these promotions.

62. The Council will also use the 'messaging' facility to promote across the whole real time display estate.

63. The Council will also arrange for these to be promoted through other Council media channels and on the Leicester Buses website.

Supported Bus Network

64. The Council will subsidise the following existing contracted services to frequencies and hours/days of operation at least as good as those registered at 1 May 2022 for the whole of the EP Scheme period:

- a. Service 103: Meynells Gorse Park and Ride
- b. Service 203: Enderby Park and Ride
- c. Service 303: Birstall Park and Ride
- d. Service 40: Circleline / Outer Orbital

65. The Council will procure and financially support the following new contracted service: Centreline – free city centre service, operating at least every 15 minutes Monday – Friday 8am to 6pm from 1 April 2023 until the end of the EP Scheme period.

This service will be subject to annual review by the EP Forum and Board. The Council will take into account any subsequent suggestions when deciding on any future changes to this service.

Car Park Pricing

66. The Council will maintain a car park pricing policy for on-street and off-street parking facilities under the Council's control that discourages all-day parking over bus or park and ride, for the whole of the EP Scheme period
67. As a minimum, the cost of 6+hours parking in Council multi-storeys will be higher than both the average day bus fare and park and ride return fares (including parking).

Workplace Parking Levy

68. The Council will undertake full consultation to introduce workplace parking levy across all employers within the EP scheme area with more than 10 parking spaces, by 1 September 2022. Subject to this review, it intends to seek Secretary of State approval to introduce this levy within the EP Scheme period.

Local Bus Operator Requirements

69. All operators in the EP Scheme agree to the following requirements to help deliver the aims and objectives of the EP Plan.

Vehicle Standards

70. All buses used on local services shall meet the following requirements from 1 April 2023 to the end of the EP scheme period:
 - a. A minimum of Euro VI emissions standard
 - b. CCTV
 - c. Automatic Vehicle Location equipment

- d. Ticketing equipment for both model 1 and model 2 contactless payment
 - e. Livery – all bus services with over 60% of passenger boardings within the Leicester Flexi Scheme Area to show ‘Leicester Buses’ logos to the agreed design guidelines.
71. Any new fully electric bus shall have audio visual announcements with the following minimum specification:
- a. next stop audio announcements on both decks, including through an induction hearing loop at every wheelchair space and priority seats.
 - b. next stop visual announcements on both decks.
 - c. take all reasonable steps to alert passengers on both decks to route diversions through audio announcements on the vehicle.
 - d. take all reasonable steps to alert passengers on both decks to route diversions through visual displays on the vehicle.

Electric Bus Investment

72. Each ‘large’ operator within the EP Scheme shall introduce at least 20 fully electric buses over the EP Scheme period, operating on services within the EP Scheme area. This is subject to agreed external funding being made available by agreed timescales.

Timetables – Registration Changes

73. Operators shall only change the timetable of any local service within the EP Scheme area on four dates per year for the whole of the EP Scheme period. These will normally be the prevailing published start date for each school term and the start of the school Summer holidays. The dates are shown in annex 16.
74. Operators will still be entitled to make emergency short notice changes on the approval of the Council, who will notify the EP Board of the reasons for its decision.

Timetables - Even Headways

75. All operators agree to review the timetables of buses on any ‘Mainlines’ bus corridor within the EP Scheme where there is more than one registered service (by one or more

operator) with the intention of achieving even scheduled headways across all routes within each Mainline. This review will be complete by 1 September 2022.

76. Those current Mainline route groups listed in Annex 17.

77. Where a feasible operating solution can be found, each relevant Mainline route group will be amended by 1 April 2023, subject to drawing up an approved Qualifying Agreement.

Route Numbering

78. Bus services operating within the EP scheme area shall not have duplicate route numbering, and operators shall re-number their routes to remove any duplicate route numbering. This shall apply to the whole of the EP Scheme period.

79. Where duplication exists on the date of the EP Scheme coming into operation, and operators have not agreed to re-number, then the service with the highest annual operating mileage within the EP scheme area shall be entitled to retain the relevant route number, and other operators must re-number their services.

Ticketing – Standard Product Definition

80. All operators to review the following specification of their tickets with a view to getting a common definition across comparable single and multi-operator ‘unlimited travel’ ticketing products:

- a. scheme boundary for unlimited travel
- b. times of operational eligibility
- c. age of eligibility
- d. days of operation
- e. dates of operation
- f. definition of forms of evidence for a discounted ticket (eg ‘student’, ‘child’).
- g. This will apply to all current and future single and multi-operator ticketing products.

81. This review will be completed by 1 September 2022 and all agreed recommendations carried out by 1 April 2023.

Multi-operator ‘Flexi’ Ticketing Schemes

82. All operators within the EP Scheme shall participate in the Flexi multi-operator ticketing scheme for all ticketing products in terms of ticket acceptance, across the whole of the EP Scheme period, unless:
- a. single operator fares for a given product are above the Flexi fare; or
 - b. it is operationally or financially prohibitive to administer a given Flexi product, and this is demonstrated to the reasonable satisfaction of the Council.
83. The overall Flexi multi-operator ticketing scheme will be managed by the Council at no cost to bus operators.
84. The operation of the Flexi scheme will continue to be governed as a ticketing agreement separate from this Enhanced Partnership Scheme.

Contactless Ticketing

85. All operators shall offer model 1 contactless ticketing for all on-bus adult and group tickets for the whole of the EP scheme period.

Single and All-operator Digital Capping

86. All operators shall offer single-operator automated fare capping with adult day and weekly caps for the whole of the EP Scheme period.
87. All operators shall introduce an all-operator adult day cap by 1 September 2022, subject to feasibility work and successful trials. This will then be in place for the whole of EP scheme period.
88. All operators to agree to introduce an all-operator weekly cap by 31 March 2023, subject to feasibility work and successful trials having taken place. This will then be in place for the whole of EP scheme period.

Network Branding

89. All operators shall apply the agreed 'Leicester Buses' network branding at those channels set out in Annex 18, from 1 September 2022 until the end of the EP Scheme period. The cost of this will be met by the City Council.
90. This will be applied to the branding guidelines collectively agreed by 1 May 2022.

Integrated Network Information

91. All operators shall only show 'Leicester Buses' branded integrated timetable and fares information at any bus stop or bus station from 1 April 2023 to 31 March 2025.
92. Operators shall ensure that their own company printed timetables and other information for all local services within the EP Scheme area include the Leicester Buses brand from 1 April 2023 to 31 March 2025.
93. All operators shall submit electronic service registration information to the City Council in an accurate, agreed form at least 7 days before a registration change takes place, for the whole of the EP Scheme period. This will enable all changes to be accurately reflected across all electronic real time information display estate and Leicester Buses website.
94. All operators shall share real time bus location information with the City Council in the digital format required to interface with the Area Traffic Control Centre, for the whole of the EP Scheme Period. The Council will use this information only for the purposes of assisting bus journey times and reliability through signal system modifications.

Bus stations

95. Operators will pay the prevailing bus station departure fees and adhere to the user manual as set out in Annex 19 for the whole of the EP Scheme period.
96. These fees will be reviewed annually by the EP Board with the aim to seek alternative funding sources to reduce their potential impact on future fare increases.

Leicester Buses Passenger Charter

97. All operators agree to determine a bus passenger charter by 1 September 2022 and adhere to this charter for the remainder of the EP Scheme period, unless changes are made in the interim through the EP variation procedure (see section 115-124)

Governance Arrangements

98. This section sets out the governance arrangements for the EP Scheme.

Enhanced Partnership Board

99. For the purposes of this Enhanced Partnership Scheme, the Leicester Enhanced Partnership Board will be set up by 1 May 2022.

100. The Board is made up of the following participants:

- One representative from each participating bus operator (one vote per operator)
- Up to four representatives from Leicester City Council (one bloc vote for City Council)
- One representative from Leicestershire County Council (no vote)

101. The Leicester EP Board representatives can change and evolve over time. Any changes to the Board participants and structure for this EP Scheme can be made using the bespoke variation procedure set out in sections 115-124 below.

102. The EP Board will be formed from the point at which the EP Plan and EP Scheme are formally made. The EP Board shall remain in place throughout the duration of the EP Scheme(s).

103. The EP Board will meet on a quarterly basis, but may meet more frequently from time to time, depending on the need for a Board meeting. Meetings will be held face to

face, with an option to attend virtually via Microsoft Teams or similar conferencing software.

104. Attendees will be notified of forthcoming meetings at least 7 days in advance of the meeting taking place, and 14 days in advance should there be a need to discuss a proposed variation to the Scheme. Papers for each meeting will be provided at the same time. Should non-scheduled meetings be required, Board members will be given as much notice as possible, with papers shared at the earliest opportunity in advance of the meeting.

105. The EP Board will be required to inform decision-making relating to the EP Scheme from time to time. Recommendations made by the EP Board will take into consideration any recommendations made by the EP Forum.

106. Decision-making will be assisted by the use of one or more decision-making tools, to help consider the relative merits and risks associated with any measures and/or facilities that could be introduced through this Scheme. The tool(s) will take account of various factors, including (but not limited to):

- delivery against EP Plan objectives
- value for money (costs and benefits)
- deliverability including physical and practical constraints
- political acceptance (locally and countywide)
- timescales for delivery
- land ownership
- planning permission considerations
- fit with other strategies and programmes

107. The tools will be identified and/or developed by the City Council working in partnership with the EP Board, during the 2022-23 financial year.

108. In order to consider a variation to the EP Scheme, the EP Board will consider all inputs from the EP Forum and the above tools to arrive at a conclusion on whether to formally recommend the variation.

109. During this period representatives on the EP Board will also undertake the necessary consultation within their respective organisations to obtain support if the variation is proposed to proceed. Once the EP Forum has commented on the proposed measures

and/or facilities, the Board recommendation and Scheme variation process shall be followed in accordance with sections 115 – 124.

Enhanced Partnership Forum

110. The Leicester Enhanced Partnership Forum is a wider group than the EP Board, incorporating different stakeholders as and when they need to be consulted on changes to the Scheme. The EP Forum will include all of the members of the EP Board, but will offer the opportunity for the following groups (as well as others not listed) to engage with the delivery of the Enhanced Partnership:

- Leicestershire and Leicester Enterprise Partnership
- Employer representation
- Representative of Bus User Panel
- Transport Focus

111. The acceptance of different groups on the EP Forum will be the decision of the City Council, taking account of the views of bus operators represented on the EP Board.

112. The EP Forum is not a decision-making body but will inform and make recommendations to the EP Board in advance of decisions being taken by the Board.

Review of Enhanced Partnership Scheme

113. Once the EP Scheme is made, it will be reviewed by the EP Board every six months following publication of data on progress towards targets, as required by the EP Plan. This will ensure any necessary action is taken to deliver the targets set out in the EP Plan.

114. Leicester City Council will initiate each review. The EP Board can also decide to review specific elements of the scheme on an ad hoc basis. EP Board members should contact Leicester City Council explaining what the issue is and its urgency. The City Council will then decide whether to table at the next scheduled meeting or make arrangements for all or the necessary EP Board members to gather more quickly.

Varying the Enhanced Partnership Scheme

115. In accordance with section s.138E of the Transport Act 2000, the procedure in sections 116 to 124 may apply in place of the provisions of section 138L to 138N of the Transport Act 2000 in order to vary this EP Scheme, in the specific circumstances expressly specified in this Scheme, or otherwise where any variation is proposed by the City Council or any Operator for the purposes of implementation of any requirement or objective of the EP Plan.
116. Consideration will be given to potential EP Scheme variations highlighted either by a local authority, one of the organisations represented on the EP Forum, or by an operator of local bus services (Proposed Variation).
117. Any variations can be proposed to the scheme, whether specified or not within the current EP Scheme, provided such variation is intended to implement the requirements or objectives of the EP Plan. The proposer of a Proposed Variation shall, so far as reasonably practicable:
- a. demonstrate how the Proposed Variation might contribute to achieving the objectives set out in the EP Plan and/or current local transport policies;
 - b. identify the local services (and operators of such services) and area which will be affected by the Proposed Variation, including any requirements which would be imposed on operators in respect of local services;
 - c. identify any facilities or measures which are to be implemented;
 - d. identify any significant effect on competition that the Proposed Variation might have.
118. Such requests should be in writing and submitted to the Director for Planning, Transport and Economic Development at Leicester City Council. The City Council will forward all requests onto each EP Board members within 5 working days.
119. On receipt of a request for a variation under this section, Leicester City Council will reconvene the EP Board, giving at least 14 days' notice for the meeting, to consider the proposed variation. Each representative will consult within their organisation as set out in paragraph 109.
120. If the proposed variation is agreed at the EP Board by Leicester City Council and all Operators present then section 123 shall apply.

121. If the proposed variation is agreed at the EP Board by Leicester City Council and all Operators present whose services are affected by the Proposed Variation (notwithstanding that other Operators may not agree to the Proposed Variation) then section 123 shall apply.

122. If the proposed variation is agreed at the EP Board by Leicester City Council and some but not all Operators present whose services are affected by the Proposed Variation (notwithstanding that other Operators may not agree to the Proposed Variation) then the Proposed Variation may be put to the operator objection mechanism as set out in The Enhanced Partnership Plans and Schemes (Objections) Regulations 2018, as if the Proposed Variation was a variation to this EP Scheme notified under section 138L of the Transport Act 2000 save that:

- a reduced objection period of 14 days shall apply in place of the 28-day period stated in section 138L(2)(c) of the Transport Act 2000;
- references to "the area to which the scheme relates" in section 138L(5)(b) of the Transport Act 2000 shall be taken to be references to the area covered by the services affected by the Proposed Variation, and if objections under this operator objection mechanism do not reach the statutory objection limit then section 123 shall apply.

123. Where this paragraph applies the City Council will consider the Proposed Variation taking into account the agreement reached by the EP Board, and shall unless they determine that there is a good reason not to make the Proposed Variation make the EP Scheme variation and publish the revised EP Scheme on its website.

124. EP Board members who are absent or not expressing a view at the meeting (either in person or in writing) will be deemed to be abstaining from the decision.

Revocation of an Enhanced Partnership Scheme

125. Section 138O of the Transport Act 2000 shall apply to the revocation of this EP Scheme.

Other Aspects

Implications for small and medium sized operators

126. Given the variety of bus operators involved (in terms of market share, fleet size, company turnover and structure), it is important to ensure that the effects of the Enhanced Partnership do not unduly negatively impact smaller operators' ability to engage or to comply with requirements.
127. The Leicester EP Board will therefore allocate operator votes on the basis of one operator per vote. In addition, Bus Operator Obligations will not be placed upon certain categories of service (non-qualifying services), including services typically operated by smaller operators.

Competition

128. Leicester City Council has undertaken an assessment of the impacts of the EP Plan and Scheme made on 14 April 2022 on competition. It believes it will not or is unlikely to have a significantly adverse effect on competition, for the purposes of Part 1 of Schedule 10 of the Transport Act 2000.
129. The EP Scheme and Plan have been sent to the Competition and Markets Authority as part of the consultation process.

Monitoring and Targets

130. A list of the data that will be submitted to the City Council by bus operators on request is set out in Annex 20.
131. This will be kept confidential and only used for the purposed of monitoring and evaluation the EP Scheme.
132. Annex 21 shows the targets based on the proportion of the overall EP Plan funding secured at 1 May 2022.

Annexes

1. Bus lanes - existing
2. Bus lanes – new
3. Red routes – existing
4. Red routes – new
5. Bus shelters
6. Bus shelter maintenance contract
7. Bus stop totems
8. Bus station facilities
9. Real time information system – maintenance contract
10. Real time information displays – existing
11. Real time information displays – new
12. Bus lane enforcement cameras – existing
13. Bus lane enforcement cameras – new
14. Mainlines network
15. Network branding – council channels
16. Timetable change dates
17. Mainlines – timetable integration
18. Network branding – operator channels
19. Bus station user manual
20. Monitoring data – operators
21. Targets - current

Annex 1 Bus lanes - existing

Bus Lanes and Bus Gates - Existing						
Jan 21						
Central Area Facilities bus lanes/gates						
Count	12				Maintain	Maintain
Location	In/Outbound	Detail	Period	Restriction	From	To
Abbey Street	inbound	Junction Belgrave Gate	At any time	Bus Gate	01/04/2022	31/03/2025
Duns Lane	inbound	St Augustines - south	At any time	Bus Gate	01/04/2022	31/03/2025
Vaughan Way	inbound	Right turn into Causeway	At any time	Bus Lane	01/04/2022	31/03/2025
Sanvey Gate	outbound	St Margarets Way - Northgates	At any time	Bus Lane	01/04/2022	31/03/2025
Rutland Street	outbound	Entry from Charles Street	At any time	Bus Gate	01/04/2022	31/03/2025
Charles Street	inbound	Halford - Rutland	At any time	Bus Lane	01/04/2022	31/03/2025
Belgrave Gate	inbound	North Bedford Street South - Charles St	At any time	Bus Lane	01/04/2022	31/03/2025
Horsefair Street	inbound	Between Market Place Approach and Granby Street	At any time	Bus Gate	01/04/2022	31/03/2025
London Road	outbound	Interchange at Train Station	At any time	Bus Lane	01/04/2022	31/03/2025
Charles Street	inbound	Northbound junction with Humberstone Gate	At any time	Bus Gate	01/04/2022	31/03/2025
Charles Street	outbound	Southbound junction with Belgrave Gate	At any time	Bus Gate	01/04/2022	31/03/2025
Causeway Lane	outbound	Westbound junction of East Bond Street	At any time	Bus Gate	01/04/2022	31/03/2025
Outer area bus						
Count	6				Maintain	Maintain
Location	In/Outbound	Detail	Period	Restriction	From	To
Thurcaston Road	inbound	River Bridge section	At any time	Bus Only Street	01/04/2022	31/03/2025
Thurcaston Road	inbound	Point prohibition at Red Hill Way junction	At any time	Bus Only Street	01/04/2022	31/03/2025
Tilling Road	inbound	SW of Collett Road	At any time	Bus Lane	01/04/2022	31/03/2025
Taylor Road	inbound	Whole Length	At any time	Bus Lane	01/04/2022	31/03/2025
Red Hill Circle	inbound	Loughborough Road - Abbey Lane	At any time	Bus Lane	01/04/2022	31/03/2025
Counting House Rd	inbound	Bus layby	At any time	No Entry - Except	01/04/2022	31/03/2025
Linear Routes						
Count	52				Maintain	Maintain
Location	In/Outbound	Detail	Period	Restriction	From	To
Abbey Lane	inbound	Red Hill Circle to Thurcaston Road Junction	At any time	Bus Lane	01/04/2022	31/03/2025
Aylestone Road	outbound	south of Banks Roads, north of Belvoir Drive	At any time	Bus Lane	01/04/2022	31/03/2025
Aylestone Road	inbound	Gas Works - Infirmary Road	At any time	Bus Lane	01/04/2022	31/03/2025
Aylestone Road	outbound	south of Saffron Lane to south of Boundary Road	At any time	Bus Lane	01/04/2022	31/03/2025
Aylestone Road	inbound	Saffron Lane - Almond Road	At any time	Bus Lane	01/04/2022	31/03/2025
Glenfield Rd East	inbound	King Richards Road - West	At any time	Bus Lane	01/04/2022	31/03/2025
Hinckley Road	outbound	E Avery Hill - W of Braunstone Way	At any time	Bus Lane	01/04/2022	31/03/2025
Hinckley Road	outbound	E Braunstone Way	At any time	Bus Lane	01/04/2022	31/03/2025
Hinckley Road	outbound	Westcoates Drive - Melcroft Avenue	At any time	Bus Lane	01/04/2022	31/03/2025
Hinckley Road	inbound	NE opp Winstanley Drive - Clarefield Road	At any time	Bus Lane	01/04/2022	31/03/2025
Hinckley Road	inbound	Wyngate Drive - Frampton Avenue	At any time	Bus Lane	01/04/2022	31/03/2025
Humberstone Rd	outbound	Syston Street East - Parry Street	At any time	Bus Lane	01/04/2022	31/03/2025
Humberstone Rd	inbound	SW Spinney Hill Road - Opp Parry Street	At any time	Bus Lane	01/04/2022	31/03/2025
Infirmary Road	inbound	Aylestone Road to Pelham Street	At any time	Bus Lane	01/04/2022	31/03/2025
Infirmary Square	inbound	Jarrom Street - South	At any time	Bus Lane	01/04/2022	31/03/2025
King Richards Rd	inbound	Herton Road - Kate Street	At any time	Bus Lane	01/04/2022	31/03/2025
King Richards Rd	inbound	West of Harborough Road North	At any time	Bus Lane	01/04/2022	31/03/2025
London Rd	outbound	Conduit Street - Exington Road	4 - 6pm M/F	Bus Lane	01/04/2022	31/03/2025
London Rd	outbound	Aylestone Road - Shakespear Street	4 - 6pm M/F	Bus Lane	01/04/2022	31/03/2025
London Rd	inbound	N of Sharklin Drive - SE Knighton Drive	7.30 - 9.30am	Bus Lane	01/04/2022	31/03/2025
London Rd	inbound	Opp St Johns Drive - Opp Stanley Road	7.30 - 9.30am	Bus Lane	01/04/2022	31/03/2025
London Rd	inbound	Grace Road - Clifton Road	7.30 - 9.30am	Bus Lane	01/04/2022	31/03/2025
London Rd	inbound	Lothair Road - Aylestone Road	7.30 - 9.30am	Bus Lane	01/04/2022	31/03/2025
Loughborough Rd	outbound	Greenway - Holden Street	4 - 6pm M/F	Bus Lane	01/04/2022	31/03/2025
Loughborough Rd	outbound	Elmdale - Belgrave Avenue	4 - 6pm M/F	Bus Lane	01/04/2022	31/03/2025
Loughborough Rd	outbound	Vicarage Lane - Thurcaston Road	4 - 6pm M/F	Bus Lane	01/04/2022	31/03/2025
Loughborough Rd	inbound	Victoria Park Road - Chapel Lane	4 - 6pm M/F	Bus Lane	01/04/2022	31/03/2025
Loughborough Rd	inbound	Checketts Road - Windsor Road	7.30 - 9.30am	Bus Lane	01/04/2022	31/03/2025
Loughborough Rd	inbound	Quemby - Belgrave	7.30 - 9.30am	Bus Lane	01/04/2022	31/03/2025
Lutterworth Rd	inbound	City Boundary - north of Gilmorton Avenue	At any time	Bus Lane	01/04/2022	31/03/2025
Lutterworth Rd	inbound	north of Buckingham Drive - south Marsden Lane	At any time	Bus Lane	01/04/2022	31/03/2025
Melton Road	inbound	Glouce Avenue - Stafford Street	At any time	Bus Lane	01/04/2022	31/03/2025
Melton Road	outbound	Sandringham Avenue - Lanesborough Road	At any time	Bus Lane	01/04/2022	31/03/2025
Melton Road	outbound	Highrigged roadside lane at junction Tigers Way	At any time	Bus Gate	01/04/2022	31/03/2025
Narborough Rd	inbound	NE Braunstone Lane East - Dumbleton Avenue	At any time	Bus Lane	01/04/2022	31/03/2025
Narborough Rd	inbound	NE Fulford Avenue	At any time	Bus Lane	01/04/2022	31/03/2025
Narborough Rd	inbound	Dumblaton Avenue - SE Rowley Fields Avenue	At any time	Bus Lane	01/04/2022	31/03/2025
Saffron Lane	inbound	Grace Road - Clifton Road	7.30 - 9.30am	Bus Lane	01/04/2022	31/03/2025
Saffron Lane	inbound	Lothair Road - Aylestone Road	7.30 - 9.30am	Bus Lane	01/04/2022	31/03/2025
Saffron Lane	outbound	Aylestone Road - Shakespear Street	4 - 6pm M/F	Bus Lane	01/04/2022	31/03/2025
Saffron Lane	inbound	Opp Lydall Road - North	At any time	Bus Lane	01/04/2022	31/03/2025
Saffron Lane	outbound	Boundary 550/552 - South bndy 570/572	At any time	Bus Lane	01/04/2022	31/03/2025
St Augustines	outbound	East of Narborough Road North	At any time	Bus Lane	01/04/2022	31/03/2025
St Augustines	inbound	Tudor Road - St Nicholas Circle	At any time	Bus Lane	01/04/2022	31/03/2025
St Augustines	outbound	Slip into Duns Lane	At any time	Bus Lane	01/04/2022	31/03/2025
Uppingham Rd	inbound	Scraptoft Lane - Coleman Road	At any time	Bus Lane	01/04/2022	31/03/2025
Welford Rd	inbound	Hillcrest Road - Victoria Park Road	7.30 - 9.30am	Bus Lane	01/04/2022	31/03/2025
Welford Rd	inbound	Aquith - Knighton Lane East	7.30 - 9.30am	Bus Lane	01/04/2022	31/03/2025
Welford Rd	inbound	Hightgate Drive - Aquith Way	7.30 - 9.30am	Bus Lane	01/04/2022	31/03/2025
Welford Rd	outbound	Granby Halls - Tigers Way	At any time	Bus Lane	01/04/2022	31/03/2025
Welford Rd	outbound	South Chestnut street - North Knighton Street	At any time	Bus Lane	01/04/2022	31/03/2025
Welford Rd	outbound	Welford Road to Infirmary Road.	At any time	Bus Gate	01/04/2022	31/03/2025
ANNEX 2						
Bus Lanes and Bus Gates - Planned						
Linear Routes						
Count	13				Commit to statutory consultation	Implement approval
Location	In/Outbound	Detail	Period	Restriction		
Grobby Road	inbound	Mary Road to Medina Road	At any time	Bus Lane	31/03/2023	31/03/2025
Abbey Park Rd	inbound	Opposite Abbey Park Entrance - Belgrave Circle	At any time	Bus Lane	31/03/2023	31/03/2025
Abbey Park Rd	outbound	After Canal Bridge - West of Abbey Park Entrance.	At any time	Bus Lane	31/03/2023	31/03/2025
St Margarets Way	inbound	Belgrave Circle to Park entrance	At any time	Bus Lane	31/03/2023	31/03/2025
St Margarets Way	outbound	Wolsley Street - South Church Gate	At any time	Bus Lane	31/03/2023	31/03/2025
Abbey Lane	inbound	Friday St to Wolsley Street	At any time	Bus Lane	31/03/2023	31/03/2025
Abbey Lane	inbound	Redhill to 263 Abbey Lane	At any time	Bus Lane	31/03/2023	31/03/2025
Abbey Lane	outbound	123 Abbey Lane to Renault garage	At any time	Bus Lane	31/03/2023	31/03/2025
Abbey Lane	outbound	186 Abbey Lane to Chale Road	At any time	Bus Lane	31/03/2023	31/03/2025
Abbey Lane	inbound	288 Abbey Lane to 362 Abbey Lane	At any time	Bus Lane	31/03/2023	31/03/2025
Anstey Lane	outbound	Buckminster Road - opposite Colwell Road	At any time	Bus Lane	31/03/2023	31/03/2025
Gorse Hill link	in/outbound	Bennion Rd - Avalon Way	At any time	Bus gate and Lane	31/03/2023	31/03/2025
Melton Rd	inbound	Braemar Dr to Glouce Av	At any time	Bus Lane	31/03/2023	31/03/2025
Melton Rd	outbound	Lanesborough Rd - Braemar Dr	At any time	Bus Lane	31/03/2023	01/04/2025

Annex 2 Bus lanes – new

Bus Lanes and Bus Gates - Planned

Bus Lanes and Bus Gates - Planned						
Linear Routes						
Count	13					
Location	In/Outbound	Detail	Period	Restiction	Commit to statutory consultation	Implement s.t approval
Groby Road	inbound	Mary Road to Medina Road	At any time	Bus Lane	31/03/2023	31/03/2025
Abbey Park Rd	inbound	Opposite Abbey Park Entrance - Belgrave Circle	At any time	Bus Lane	31/03/2023	31/03/2025
Abbey Park Rd	outbound	After Canal Bridge – West of Abbey Park Entrance.	At any time	Bus Lane	31/03/2023	31/03/2025
St Margarets Way	inbound	Belgrave Circle to Park entrance	At any time	Bus Lane	31/03/2023	31/03/2025
St Margarets Way	outbound	Wolsey Street - South Church Gate	At any time	Bus Lane	31/03/2023	31/03/2025
Abbey Lane	inbound	Friday St to Wolsey Street	At any time	Bus Lane	31/03/2023	31/03/2025
Abbey Lane	inbound	Redhill to 263 Abbey Lane	At any time	Bus Lane	31/03/2023	31/03/2025
Abbey Lane	outbound	123 Abbey Lane to Renault garage	At any time	Bus Lane	31/03/2023	31/03/2025
Abbey Lane	outbound	186 Abbey Lane to Chale Road	At any time	Bus Lane	31/03/2023	31/03/2025
Abbey Lane	inbound	288 Abbey Lane to 362 Abbey Lane	At any time	Bus Lane	31/03/2023	31/03/2025
Anstey Lane	outbound	Buckminster Road - opposite Colwell Road	At any time	Bus Lane	31/03/2023	31/03/2025
Anstey Lane :Gorse Hill link	in/outbound	Bennion Rd - Avalon Way	At any time	Bus gate and Lane	31/03/2023	31/03/2025
Melton Rd	inbound	Braemer Dr to Glencoe Av	At any time	Bus Lane	31/03/2023	31/03/2025
Melton Rd	outbound	Lanesborough Rd – Braemar Dr	At any time	Bus Lane	31/03/2023	31/03/2025

Annex 3 Red routes – existing

Red Routes - Existing		
count	1	
Road	Description	Date to review permanence
London Rd	St Georges Way/Waterloo Way to the Mayfield Rd/Victoria Park Rd roundabout (inbound and outbound)	31/03/23

Annex 4 Red routes – new

Red Routes - Planned		
count	5	
Road	Description	Date to review
Central	Central area road network - roads to be agreed	31/03/24
A6	St Margaret's Way and Abbey Lane from Vaughan Way to Red Hill Circle	31/03/24
Abbey Park Rd	Outbound and inbound section review	31/03/24
Melton Rd	Belgrave Rd - Troon Way	31/03/24
Evington Rd	Whole length	31/03/24

Annex 5 Bus shelters

Bus Shelters					
Contract number: 479					
These will be located across the stops listed below.					
Currently being installed					
Count	459				
Site No.	Address	Postcode	Street	Current	Date installed
8000	Abbey Lane Adj 123 Abbey Lane	LE4 5QX	Abbey Lane	JCDecaux	23.08.21
8001	Abbey Lane Adj Lexus Garage	LE4 0DZ	Abbey Lane	JCDecaux	15.10.21
8002	Abbey Lane Opp Byford Road	LE4 5QU	Abbey Lane	JCDecaux	01.10.21
8003	Abbey Lane Outside Seagas House	LE4 5JD	Abbey Lane	N/A	
8005	Abbey Park Road Adj 69 Abbey Park Road	LE4 5AP	Abbey Park Road	JCDecaux	22.09.21
8006	Abbey Park Road E Bound Abbey Lane	LE4 5QY	Abbey Park Road	N/A	
8008	Abbey Park Road Opp Abbey Park	LE4 5AQ	Abbey Park Road	JCDecaux	
8007	Abbey Park Road Opp Leicester College	LE4 5AW	Abbey Park Road	JCDecaux	
8218	Abbey Street Stand Bk St James Hotel	LE2 2AG	Abbey Street	JC Decaux	
8387	Aikman Avenue Adj 103 Aikman Avenue	LE3 9JT	Aikman Avenue	Council	
8011	Aikman Avenue Adj Aikman Close	LE3 9JJ	Aikman Avenue	N/A	
8012	Aikman Avenue Adj Kay Road	LE3 9JT	Aikman Avenue	JCDecaux	07.05.21
8013	Aikman Avenue Near219 Aikman Avenue	LE3 9PX	Aikman Avenue	JCDecaux	27.04.21
8015	Aikman Avenue Opp 155 Aikman Avenue	LE3 6QP	Aikman Avenue	JCDecaux	05.05.21
8016	Aikman Avenue Opp 200 Aikman Avenue	LE3 9JJ	Aikman Avenue	N/A	
8014	Aikman Avenue Opp 95 Aikman Avenue	LE3 9JG	Aikman Avenue	N/A	11.08.21
8389	Aikman Avenue Opp Salvation	LE4 1WX	Aikman Avenue	Council	
8388	Aikman Avenue Opp The Good Neighbours Public House	LE3 9PY	Aikman Avenue	Council	
8017	Aikman Avenue Outside 147 Aikman Avenue	LE3 9JB	Aikman Avenue	JCDecaux	07.05.21
8019	Aikman Avenue Outside 3 Aikman Avenue	LE3 9RX	Aikman Avenue	JCDecaux	27.04.21
8018	Aikman Avenue Outside Area Housing Offices	LE3 9PY	Aikman Avenue	JCDecaux	20.04.21
8020	Ambassador Road Adj 105 Ambassador Road	LE5 4EP	Ambassador Road	JCDecaux	20.04.21
8021	Ambassador Road Opp Illingworth Road Flats 105-111	LE5 4ET	Ambassador Road	JCDecaux	14.04.21
8024	Anstey Lane Adj 201 Anstey Lane	LE4 0FH	Anstey Lane	JCDecaux	
8023	Anstey Lane Adj 207 Anstey Lane	LE4 0FE	Anstey Lane	JCDecaux	22.07.21
8025	Anstey Lane Adjacent Beaumont Leys School	LE4 0EJ	Anstey Lane	JCDecaux	
8026	Anstey Lane Opp English Martyrs School Entrance	LE4 0FJ	Anstey Lane	JCDecaux	
8027	Anstey Lane Opp Gorse Hill Hospital	LE4 1AA	Anstey Lane	JCDecaux	
8028	Astill Lodge Road Adj Beaumont Lodge School	LE4 1DT			
8033	Astill Lodge Road Before Maplewell Drive	LE4 1BL	Astill Lodge Road	N/A	
8031	Astill Lodge Road Opp Beaumont Lodge School	LE4 1DW	Astill Lodge Road	JCDecaux	
8030	Astill Lodge Road Opp Grayswood Drive	LE4 1EP	Astill Lodge Road	JCDecaux	19.08.21
8032	Astill Lodge Road Outside 5 & 7 Astill Lodge Road	LE4 1BQ	Astill Lodge Road	N/A	19.08.21
8029	Astill Lodge Road Swallowdale Drive	LE4 1ED	Astill Lodge Road	JCDecaux	19.08.21
8034	Attlee Way Adjacent Linwood Lane	LE2 6QR	Attlee Way	JCDecaux	20.10.21
8035	Attlee Way E Bound Saifron Cross Roads	LE2 6PD	Attlee Way	JCDecaux	22.09.21
8036	Attlee Way Opposite Arnesby Crescent	LE2 6QP	Attlee Way	JCDecaux	29.10.21
8037	Aylestone Drive Opp Glenhills Boulevard Junction	LE2 8SD	Aylestone Drive	JCDecaux	15.11.21
8041	Aylestone Road Adj 316 Aylestone Road	LE2 8BJ	Aylestone Road	N/A	
8042	Aylestone Road Adj 502 Aylestone Road	LE2 8JB	Aylestone Road	JCDecaux	14.04.21
8040	Aylestone Road Adj Boundary Road	LE2 7QJ	Aylestone Road	JCDecaux	31.03.21
8038	Aylestone Road Adj Entrance To Odeon Cinema	LE2 7JS	Aylestone Road	JCDecaux	21.10.21
8043	Aylestone Road Adj Souls Church 5m Before Sawday st	LE2 7LN	Aylestone Road	JCDecaux	27.04.21
8195	Aylestone Road Adj Walnut Street & O/S Lri	LE2 7AD	Aylestone Road	JCDecaux	31.03.21
8039	Aylestone Road Opp 727 Aylestone Road Age Uk	LE2 8TG	Aylestone Road	JCDecaux	
8045	Aylestone Road Opp Aylestone Road Co-Op	LE2 8PR	Aylestone Road	JCDecaux	04.02.21
8046	Aylestone Road Opp Grace Road O/S Chrysler Garage	LE2 8TB	Aylestone Road	JCDecaux	17.03.21
8048	Aylestone Road Outside 651 Aylestone Road	LE2 8TF	Aylestone Road	JCDecaux	17.08.21
8047	Aylestone Road Outside Van Sales	LE2 7LF	Aylestone Road	JCDecaux	05.05.21
8049	Barkby Road Opp 5 Barkby Road Dhami Butchers	LE4 9BX	Barkby Road	JCDecaux	20.04.21
8050	Beaumont Leys Lane N Bound Leycroft Road	LE4 2LE	Beaumont Leys Lane	N/A	
8051	Beaumont Leys Lane Outside 13 Beaumont Leys Lane	LE4 0DB	Beaumont Leys Lane	JCDecaux	31.03.21
8052	Beaumont Leys Lane S Bound Leycroft Road	LE4 2LE	Beaumont Leys Lane	N/A	
8053	Belgrave Gate Adj Painter Street	LE1 3XQ	Belgrave Gate	JCDecaux	12.10.21
8054	Belgrave Gate Opp Leicester College	LE1 2HS	Belgrave Gate	JCDecaux	01.10.21
8255	Belgrave Gate Stand Bm Bowlturners Arms Public H	LE1 3FG	Belgrave Gate	JCDecaux	17.03.21
8056	Belgrave Road Adj Abbey Park Street	LE4 5GF	Belgrave Road	N/A	
8057	Belgrave Road Adj Law Street	LE4 5AU	Belgrave Road	JCDecaux	21.10.21
8058	Bennion Road Opp Heatherbrook Road	LE4 1ER	Bennion Road	JCDecaux	24.03.21
8390	Bennion Road Opp Redruth Road	LE3 1JU	Bennion Road	Council	24.03.21
8044	Bennion Road Stand A Orwell Drive	LE4 1DF	Bennion Road	JCDecaux	03.03.21
8010	Bennion Road Stand B Orwell Drive	LE4 1DF	Bennion Road	JCDecaux	17.02.21
8009	Bennion Road Stand D Orwell Drive	LE4 1DF	Bennion Road	JCDecaux	24.02.21
8391	Blackmore Drive Opp Priestley Road O/S Flat 19	LE4 2PY	Blackmore Drive	Council	27.04.21
8061	Border Drive Adj 59 Border Drive	LE4 2PG	Border Drive	JCDecaux	05.05.21
8392	Border Drive Opp Bridlespar Way & Pytchley Close	LE5 1PD	Border Drive	N/A	20.04.21
8062	Border Drive Opp Jersey Road	LE4 2LR	Border Drive	Council	14.04.21
8064	Bowhill Grove Adj 138 Bowhill Grove	LE5 2LB	Bowhill Grove	JCDecaux	13.08.21
8063	Bowhill Grove Adj 29 Bowhill Grove	LE5 2PD	Bowhill Grove	JCDecaux	21.04.21
8393	Bowhill Grove N Bound 52 Bowhill	LE3 3AF	Bowhill Grove	Council	27.04.21
8065	Bowhill Grove Opp 90 Bowhill Grove	LE5 2QF	Bowhill Grove	JCDecaux	12.11.21
8067	Bowhill Grove Opp Flats 133 & 135	LE5 2QN	Bowhill Grove	JCDecaux	16.09.21
8066	Bowhill Grove Opp Greta Way	LE5 2PD	Bowhill Grove	JCDecaux	14.04.21
8068	Bowhill Grove S Bound 52 Bowhill	LE5 2PB	Bowhill Grove	JCDecaux	05.05.21
8071	Braunstone Lane East Adj 37 Braunstone Lane East	LE3 2FD	Braunstone Lane East	JCDecaux	27.10.21
8394	Braunstone Lane Opp 266 Braunstone Lane	LE3 3DH	Braunstone Lane	Council	
8070	Braunstone Lane Opp 399 Braunstone Lane	LE3 3DE	Braunstone Lane	JCDecaux	
8395	Braunstone Lane Opp 504 Braunstone Lane	LE2 3PG	Braunstone Lane	Council	
8069	Braunstone Lane Opp Sunway & O/S Braunstone Lane	LE3 3DF	Braunstone Lane	JCDecaux	05.05.21
8072	Burnham Drive Adj 70 Burnham Drive	LE4 0HP	Burnham Drive	JCDecaux	24.08.21
8074	Catherine Adj Harrogate Road	LE4 6GB	Catherine Street	JCDecaux	
8077	Catherine Street Outside 205 - The Spice Tree	LE4 6GE	Catherine Street	JCDecaux	02.10.21
8075	Catherine Street Adj 83 & 85 Catherine Street	LE4 6EL	Catherine Street	JCDecaux	10.11.21
8073	Catherine Street Adj Cotman Walk	LE4 6DY	Catherine Street	JCDecaux	19.10.21
8076	Catherine Street Ne Bound Shree Sanatan Temple	LE4 6EP	Catherine Street	JCDecaux	06.10.21
8078	Catherine Street Sw Bound 134 Catherine Street	LE4 6EN	Catherine Street	JCDecaux	29.09.21
8095	Causeway Lane Stand Ac Stand Ac	LE3 6LH	Causeway Lane (Double)	JCDecaux	
8092	Causeway Lane Stand Ad Stand Ad	LE1 4AP	Causeway Lane (Double)	JCDecaux	
8090	Causeway Lane Stand Ae Stand Ae	LE1 1HL	Causeway Lane (Double)	JCDecaux	
8082	Causeway Lane Stand Af Stand Af	LE1 4AP	Causeway Lane	JCDecaux	24.03.21

Currently being installed					
Site No.	Address	Postcode	Street	Current	Date installed
8083	Causeway Lane Stand Ag Stand Ag	LE3 0PE	Causeway Lane	JCDecaux	
8093	Causeway Lane Stand Ah Stand Ah	LE1 3FG	Causeway Lane	JCDecaux	
8125	Causeway Lane Stand Aj Stand Aj	LE2 1HG	Causeway Lane	JCDecaux	
8243	Charles Street Stand Ca 16 Charles Street Peking	LE4 7SD	Charles Street (Double)	JCDecaux	18.06.21
8256	Charles Street Stand Cb 32 Charles Street	LE1 1HL	Charles Street	JCDecaux	03.03.21
8288	Charles Street Stand Cc 52-60 Charles Street	LE2 7NB	Charles Street (Double)	JCDecaux	25.06.21
8309	Charles Street Stand Cd 60 Charles Street	LE1 1FB	Charles Street	JCDecaux	
8310	Charles Street Stand Ce 68 Charles	LE1 1FB	Charles Street (Double)	JCDecaux	
8311	Charles Street Stand Cf 70-72 Charles Street Hfc	LE1 4GH	Charles Street (Double)	JCDecaux	
8094	Charles Street Stand Cm 20-22 Charles Street Age C	LE1 5FL	Charles Street	JCDecaux	
8459	Charles Street Stand Ea Kwik Fit	LE1 4LF	Charles Street	JCDecaux	03.03.21
8460	Charles Street Stand Eb 124 Charles Street Capsule	LE1 6EH	Charles Street	JCDecaux	10.03.21
8397	Charnor Road Adj 26 Charnor Road	LE3 6UH	Charnor Road	Council	
8096	Charnor Road Adj New Parks Social	LE3 6QU	Charnor Road	JCDecaux	
8097	Charnor Road Opp 53 Charnor Road	LE2 6BJ	Charnor Road	JCDecaux	07.10.21
8398	Charnor Road Opp New Parks Social	LE1 2GL	Charnor Road	Council	
8399	Christow Street Opp 62 Christow Street	LE3 1QJ	Christow Street	Council	
8098	Clarendon Park Road Adj Leopold	LE2 6BJ	Clarendon Park Road	JCDecaux	
8099	Colchester Road Adj 57a & 59 Colchester Road	LE5 6RD	Colchester Road	JCDecaux	23.09.21
8100	Colchester Road Opp Averil Road	LE5 4LH	Colchester Road	JCDecaux	24.09.21
8103	Coleman Road Adj 165 Coleman Road	LE5 4EN	Coleman Road	JCDecaux	02.09.21
8101	Coleman Road Adj 204 Coleman Road	LE5 6TT	Coleman Road	JCDecaux	30.09.21
8102	Coleman Road Adj Woodborough	LE5 4LJ	Coleman Road	JCDecaux	26.08.21
8104	Coleman Road Opp Waterfield Close	LE3 1EJ	Coleman Road	JCDecaux	02.09.21
8401	Cort Crescent Opp 31 Cort Crescent	LE3 1QZ	Cort Crescent	Council	
8402	Cort Crescent Opp 5 Cort Crescent	LE3 1QN	Cort Crescent	Council	
8405	Cort Crescent Outside 1 Cort Crescent	LE3 6QE	Cort Crescent	Council	
8107	Cort Crescent Outside 221/223 Cort Crescent	LE2 7LT			
8108	Counting House Road Outside Morrisons In Layby	LE3 6QD	Counting House Road	JCDecaux	26.10.21
8109	Dominion Road Adj Veterinary Surgery	LE3 6QB	Dominion Road	JCDecaux	04.11.21
8406	Dominion Road After Charnor Road	LE5 6LJ	Dominion Road	Council	
8110	Dominion Road Outside 231 Dominion Road	LE5 6LR	Dominion Road	JCDecaux	17.09.21
8407	Downing Drive Opp 110 Downing Drive	LE5 2EA	Downing Drive	Council	
8111	Downing Drive Opp Barnstaple Road	LE5 2ES	Downing Drive	N/A	24.03.21
8113	Dudley Avenue Adj 28 Dudley Avenue	LE5 2EG	Dudley Avenue	JCDecaux	
8112	Dudley Avenue Adj 5 Dudley Avenue	LE5 2FB	Dudley Avenue	JCDecaux	01.10.21
8408	Dudley Avenue Opp 27 Dudley Avenue	LE3 5LW	Dudley Avenue	Council	
8115	Dudley Avenue W Bound 63 Dudley Avenue	LE5 5GY	Dudley Avenue	JCDecaux	08.10.21
8114	Dudley Avenue W Bound 89 Dudley Avenue	LE5 2EL	Dudley Avenue	JCDecaux	11.10.21
8409	Duns Lane Opp Corah Street	LE5 3RL	Duns Lane	Council	
8116	East Park Road Adj Church	LE5 4QB	East Park Road	JCDecaux	
8117	142 East Park Road Sw Bound O/S Pioneer Brand Ltd	LE5 5FD	East Park Road	JCDecaux	24.02.21
8118	East Park Road Opp 216 East Park Road	LE5 2DL	East Park Road	JCDecaux	12.10.21
8410	East Park Road Outside Dala Knitwear	LE3 9QP	East Park Road	Council	
8411	East Service Road Main Entrance Glenfield Hospital	LE5 5WB	East Service Road	Council	
8119	Elmcroft Avenue Outside 25 Elmcroft Avenue	LE5 5PQ	Elmcroft Avenue	JCDecaux	22.10.2021
8412	Ethel Road Adj Plymouth Drive	LE5 5PH	Ethel Road	Council	
8413	Evington Drive Adj Mayflower School	LE2 1QL	Evington Drive	Council	
8120	Evington Drive Opp Evington Valley	LE5 5PS	Evington Drive	JCDecaux	
8121	Evington Lane Adj 135 Evington Lane	LE2 1QH	Evington Lane	JCDecaux	03.09.21
8414	Evington Road Adj 163 Evington Road	LE3 6UL	Evington Road	Council	
8478	Evington Road Adj 210 Evington Road	LE2 2PZ	Evington Road	JCDecaux	01.10.21
8122	Evington Road Adj Evington Place & Supermarket	LE2 1QJ	Evington Road	JCDecaux	27.09.21
8123	Evington Road Adj Glossop Street	LE2 1HF	Evington Road	JCDecaux	
8124	Evington Road Adj Hamilton Street	LE1 4AP	Evington Road	JCDecaux	24.09.21
8126	Evington Road Opp 67 Fast Food Takeaway	LE5 5LU	Evington Road	JCDecaux	23.09.21
8128	Evington Valley Road Adj Ethel Road	LE5 5LU	Evington Valley Road	JCDecaux	
8127	Evington Valley Road Adj Gwendolen Road	LE5 5LZ	Evington Valley Road	JCDecaux	03.11.21
8129	Evington Valley Road Near Trellborg Ass Points 4-5	LE5 5LZ	Evington Valley Road	JCDecaux	
8130	Evington Valley Road Opp S&P Coils Factory	LE3 5EQ	Evington Valley Road	JCDecaux	05.11.21
8132	Fosse Road North Adj Pool Road	LE3 5EZ	Fosse Road North	JCDecaux	26.08.21
8133	Fosse Road North Adj Stephenson	LE3 0JU	Fosse Road North	JCDecaux	20.08.21
8131	Fosse Road North O/s No 20 Fosse Road North	LE3 9SG	Fosse Road North	JCDecaux	20.08.21
8134	Fosse Road South Opposite 70 Frs O/S Health Centr	LE1 5FL	Fosse Road South	JCDecaux	28.10.21
8081	Fosse Road South Outside 2 Fosse Road South	LE3 0LP	Fosse Road South	JCDecaux	10.02.21
8135	Frog Island Opp 8 Frog Island Willowtop Ltd	LE5 6TB	Frog Island	JCDecaux	17.02.21
8416	Fulford Road Opp 11 Fulford Road	LE3 6UL	Fulford Road	Council	
8415	Fulford Road Opp Glenrothes Close	LE3 6UU	Fulford Road	Council	
8417	Fulford Road W Bound Glenthroes	LE5 4PW	Fulford Road	Council	
8136	Gamel Road Adj Davenport	LE5 5DU	Gamel Road	JCDecaux	27.10.21
8137	Gedding Road Adj 42 Gedding Road	LE2 9GT	Gedding Road	JCDecaux	
8418	General Hospital Adj Main Entrance	LE5 4PW	General Hospital Grounds	Council	
8420	General Hospital Grounds Outside Coleman Road	LE4 7ZT	General Hospital	Council	
8419	General Hospital Opp Boiler House	LE5 4LN	General Hospital	Council	
8138	Gilmorton Avenue Adj Adjacent To 24 Holts Close	LE2 9YJ	Gilmorton Avenue	JCDecaux	18.08.21
8139	Gilmorton Avenue Opp Hopyard Close	LE2 6TW	Gilmorton Avenue	JCDecaux	24.09.21
8140	Glenborne Road Opp 2 Glenborne	LE18 4YJ	Glenborne Road	JCDecaux	22.09.21
8141	Glenborne Road Opp 37 Glenborne	LE4 7YL	Glenborne Road	JCDecaux	
8143	Gleneagles Avenue Adj Roseway	LE3 6DN	Gleneagles Avenue	JCDecaux	10.12.21
8142	Gleneagles Avenue Adj To 335 Glaneagles Avenue	LE4 7GB	Gleneagles Avenue	JCDecaux	19.08.21
8421	Gleneagles Avenue Opp Soar Valley College	LE3 6AW	Gleneagles Avenue	Council	
8145	Glenfield Road Adj 25 Glenfield Road	LE3 6DA	Glenfield Road	JCDecaux	30.09.21
8146	Glenfield Road Adj Convent & Opposite 116	LE3 6NZ	Glenfield Road	JCDecaux	
8144	Glenfield Road Adj New College	LE3 5QW	Glenfield Road	JCDecaux	12.11.21
8422	Glenfield Road E Bound Henley Road	LE3 6AU	Glenfield Road	Council	
8423	Glenfield Road Opp Franche Road	LE3 9QB	Glenfield Road	Council	
8147	Glenfield Road Opp New College	LE3 9QQ	Glenfield Road	JCDecaux	22.09.21
8148	Glenfrith Way Adj Hallgate Drive	LE7 7GU	Glenfrith Way	JCDecaux	
8149	Glenfrith Way Opp Side Of Severn Trent Water Build	LE2 8UA	Glenfrith Way	JCDecaux	22.09.21
8150	Glenhills Way Opp 11 Glenhills Boulevard	LE5 6TR	Glenhills Way	JCDecaux	03.11.21
8152	Goodwood Road opp 205 Goodwood Road	LE5 6TR	Goodwood Road	JCDecaux	29.09.21
8153	Goodwood Road Opp Of 61 Goodwood Road	LE5 4GN	Goodwood Road	JCDecaux	10.12.21
8154	Green Lane Road Adj 208 Green Lane Road	LE5 4ND	Green Lane Road	JCDecaux	15.09.21
8157	Green Lane Road Opp 173 & 177 Patisserie & Bakery	LE3 9ED	Green Lane Road	JCDecaux	28.10.21
8156	Green Lane Road Opp 265 Green Lane Road	LE5 4QA	Green Lane Road	JCDecaux	15.09.21
8155	Green Lane Road Opp 334 Green Lane Road	LE5 4PN	Green Lane Road	N/A	
8164	Grobby Road Adj 147 Grobby Road	LE3 9EB	Grobby Road	JCDecaux	
8163	Grobby Road Adj Darlington Road	LE3 9BN	Grobby Road	JCDecaux	
8086	Grobby Road Adj Fosse Road Corner	LE1 4LD	Grobby Road	JCDecaux	24.02.21

Currently being installed					
Site No.	Address	Postcode	Street	Current	Date installed
8158	Groby Road Adj Fosse Road Corner	LE1 4FP	Groby Road	N/A	
8159	Groby Road Adj Glenfield Hospital	LE3 9BF	Groby Road	JCDecaux	
8165	Groby Road Adj Mary Road	LE3 9QG	Groby Road	JCDecaux	16.08.21
8166	Groby Road Adj Skoda Garage	LE4 2DP	Groby Road	JCDecaux	08.12.21
8160	Groby Road Opp Darlington Road	LE3 9BT	Groby Road	JCDecaux	16.09.21
8161	Groby Road Opp Loros Hospital	LE3 9EB	Groby Road	JCDecaux	
8162	Groby Road Opp Mary Road	LE3 9BU	Groby Road	JCDecaux	16.08.21
8424	Groby Road Opp Skoda Garage	LE5 5GA	Groby Road	Council	
8168	Halifax Drive Adj 144 Halifax Drive	LE3 1FH	Halifax Drive	JCDecaux	05.10.21
8167	Halifax Drive Adj 92 Halifax Drive	LE4 2BD	Halifax Drive	JCDecaux	17.08.21
8426	Halifax Drive Opp Rainsford Crescent	LE3 0WD	Halifax Drive	Council	
8169	Hallam Crescent East Adj 187 Hallam Crescent East	LE5 0NG	Hallam Crescent East	JCDecaux	17.08.21
8170	Hastings Road Opp 9 Ickworth Close	LE1 5FA	Hastings Road	JCDecaux	13.10.21
8174	Heacham Drive Adj Linney Road	LE4 0RJ	Heacham Drive	JCDecaux	29.09.21
8175	Heacham Drive Adj Lomond Crescent	LE4 0UW	Heacham Drive	JCDecaux	15.10.21
8178	Heacham Drive Opp Baxters Close	LE4 0PX	Heacham Drive	N/A	
8179	Heacham Drive Opp Calver Hey Road	LE5 6AB	Heacham Drive	JCDecaux	
8176	Heacham Drive Opp Limney Road	LE4 0RJ	Heacham Drive	N/A	
8177	Heacham Drive Opp Lomond Crescent	LE4 0QR	Heacham Drive	N/A	
8180	Headland Road Opp 7 Headland Road	LE3 5EX	Headland Road	JCDecaux	13.09.21
8181	Henley Road Adjacent 95 Henley Road	LE4 9JZ	Henley Road	JCDecaux	24.08.21
8182	Hill Rise Outside Post Office	LE2 9QQ	Hill Rise	JCDecaux	
8186	Hillsborough Road Outside Eyres Monsell Com Centre	LE3 1JN	Hillsborough Road	JCDecaux	23.09.21
8183	Hillsborough Road Adj Flats 126/128	LE2 9PQ	Hillsborough Road	JCDecaux	
8185	Hillsborough Road Opp 204	LE2 9FN	Hillsborough Road	JCDecaux	24.09.21
8184	Hillsborough Road Opp Eamont Close	LE2 9PT	Hillsborough Road	N/A	
8187	Hinckley Road Adj Fasta Unit & 70m After Wstnly D	LE3 0TH	Hinckley Road	JCDecaux	
8427	Hinckley Road Adj Western Park	LE5 0EG	Hinckley Road	Council	
8188	Hinckley Road Adjacent Mostyn Street	LE3 0TA	Hinckley Road	JCDecaux	
8189	Hinckley Road Corner Narborough	LE3 0RA	Hinckley Road	JCDecaux	13.09.21
8190	Hinckley Road Opp Braunstone Leisure Centre	LE3 1JN	Hinckley Road	JCDecaux	20.09.21
8191	Hinckley Road Outside Braunstone Leisure Centre	LE1 6ZG	Hinckley Road	N/A	
8193	Hinckley Road Outside 103 Hinckley	LE3 0WB	Hinckley Road	JCDecaux	
8059	Hinckley Road Outside 291 Hinckley	LE3 0TJ	Hinckley Road	JCDecaux	10.02.21
8194	Hinckley Road Outside 415 Hinckley	LE2 7TR	Hinckley Road	N/A	
8350	Humberstone Gate Stand Da Yeoman Street	LE5 0RA	Humberstone Gate (Double)	JCDecaux	25.06.21
8363	Humberstone Gate Stand Db 46 Clarence House	LE2 6AD	Humberstone Gate	JCDecaux	
8379	Humberstone Gate Stand Dc Cornerstone House	LE5 6LF	Humberstone Gate (Double)	JCDecaux	
8461	Humberstone Gate Stand Dd Life Nightclub	LE1 5BD	Humberstone Gate (Double)	JCDecaux	
8462	Humberstone Gate Stand De 64-66 Fresh Start Fitness	LE2 0EL	Humberstone Gate (Double)	JCDecaux	11.06.21
8374	Humberstone Gate Stand Dg 81 Humberstone Gate	LE1 6VE	Humberstone Gate (Double)	JCDecaux	18.06.21
8362	Humberstone Gate Stand Dh 71 Humberstone Gate	LE1 3PJ	Humberstone Gate (Double)	JCDecaux	
8345	Humberstone Gate Stand Dj 61 Humberstone Gate	LE5 0QF	Humberstone Gate (Double)	JCDecaux	11.06.21
8199	Humberstone Road Adj 107 - 111 Andrea Hoisery Ltd	LE5 0EP	Humberstone Road	JCDecaux	21.10.21
8428	Humberstone Road Adj Merlin Vaz Health Centre	LE3 1AA	Humberstone Road	JCDecaux	01.12.21
8200	Humberstone Road E Bound 332 Humberstone Road	LE5 0EG	Humberstone Road	JCDecaux	25.11.21
8201	Humberstone Road Opp 19-24 Curlew Walk Flats	LE1 1WT	Humberstone Road	JCDecaux	17.11.21
8472	Humberstone Road Stand 2 Stand 2	LE1 2NZ	Humberstone Road	JCDecaux	24.02.21
8473	Humberstone Road Stand 3 Stand 3	LE2 1EG	Humberstone Road	JCDecaux	03.02.21
8203	Humberstone Road W Bound Merlin Vaz Health Centre	LE3 1JH	Humberstone Road	JCDecaux	
8204	Imperial Avenue Opposite Guthridge Crescent	LE2 7AJ	Imperial Avenue	JCDecaux	15.09.21
8429	Imperial Avenue Outside Imperial Avenue Infant Sch	LE3 5QG	Imperial Avenue	Council	
8205	Infirmiry Road Stand 1 Royal Infirmiry Hospital	LE1 5WX	Infirmiry Road	JCDecaux	09.09.21
8206	Infirmiry Road Stand 2 Royal Infirmiry Hospital	LE3 5PQ	Infirmiry Road	JCDecaux	09.09.21
8207	King Richards Road Adj 65 King Richards Road	LE3 5PQ	King Richards Road	JCDecaux	10.02.21
8430	King Richards Road Adj End Of Kate	LE2 9NN	King Richards Road	Council	
8208	King Richards Road Opp 65 King Richards Road	LE2 6UD	King Richards Road	JCDecaux	03.02.21
8209	Knighton Lane East Opp Entrance To Leisure Centre	LE4 2WD	Knighton Lane East	JCDecaux	08.12.21
8211	Liberty Road Adj 110 Liberty Road	LE3 6PZ	Liberty Road	JCDecaux	15.09.21
8212	Liberty Road Adj 202 Liberty Road	LE3 6PB	Liberty Road	JCDecaux	17.09.21
8213	Liberty Road Opp 138 Liberty Road	LE1 5EH	Liberty Road	JCDecaux	10.09.21
8215	London Road Adj 319 London Road	LE2 2AP	London Road	JCDecaux	
8216	London Road Adj Clarendon Park Road	LE2 2PQ	London Road	JCDecaux	29.10.21
8214	London Road Adj Morland Avenue	LE2 2PU	London Road	JCDecaux	
8217	London Road Adj Toller Road	LE1 3GG	London Road	JCDecaux	
8474	London Road Adj Victoria Park	LE4 6QS	London Road	JCDecaux	10.03.21
8479	London Road After Shirley Road	LE5 4BQ	London Road	JCDecaux	13.08.21
8477	London Road Opp 199 London Road	LE2 1HN	London Road	JCDecaux	03.03.21
8222	London Road Opp 202 London Road	LE1 6VT	London Road	JCDecaux	
8219	London Road Opp Clarendon Park	LE1 5BB	London Road	JCDecaux	
8221	London Road Opp Victoria Park	LE2 1NE	London Road	JCDecaux	
8220	London Road Opp Wallace Court	LE2 1NN	London Road	JCDecaux	
8224	London Road Opposite Hendon	LE1 3TE	London Road	JCDecaux	
8467	London Road Outside The Lansdowne Public House	LE4 5EA	London Road	N/A	
8469	London Road Stand 1 The Lansdowne Public House	LE2 0QS	London Road	N/A	10.03.21
8470	London Road Stand 2 The Lansdowne Public House	LE1 2NZ	London Road	N/A	24.02.21
8463	London Road Stand Ed 48 & 50 London Road	LE2 0QB	London Road	Council	24.03.21
8464	London Road Stand Ee Rail Station	LE2 0QB	London Road	Council	31.03.21
8465	London Road Stand Ef Rail Station	LE4 5AX	London Road	Council	31.03.21
8227	Loughborough Road Opp 131 Loughborough Road	LE87 4ED	Loughborough Road	JCDecaux	17.11.21
8228	Loughborough Road Opp 131 Loughborough Road	LE1 6EH	Loughborough Road	JCDecaux	
8466	Loughborough Road Opp 5 Loughborough Road Shampoo	LE2 0QT	Loughborough Road	JCDecaux	17.02.21
8431	Lutterworth Road Adj 97 & 99 Lutterworth Road	LE4 7SZ	Lutterworth Road	Council	
8079	Lutterworth Road Adj Tesco	LE2 8LQ	Lutterworth Road	JCDecaux	10.02.21
8229	Lutterworth Road Opp 65 Lutterworth Road	LE5 1QD	Lutterworth Road	JCDecaux	
8230	Maidenwell Avenue Opp Bakers Way	LE5 6DN	Maidenwell Avenue	N/A	
8231	Main Street Adj The Cedars Public	LE5 6DN	Main Street	JCDecaux	24.11.21
8232	Mansfield Street Link Ba	LE1 3DD	Savoy Street	N/A	
8233	Mansfield Street Link Bb	LE1 3DD	Savoy Street	N/A	
8234	Mansfield Street Link Bc	LE4 9EH	Savoy Street	N/A	
8236	Marwood Road Opp Burdett Way	LE2 0GU	Marwood Road	JCDecaux	
8238	Melbourne Road Before Berners	LE4 5EE	Melbourne Road	JCDecaux	
8237	Melbourne Road Opp Uplands Infants School	LE2 0UT	Melbourne Road	JCDecaux	
8239	Melton Road Adj 171 Melton Road	LE1 1FN	Melton Road	JCDecaux	27.08.21
8240	Melton Road Adj 2 Nat West Bank	LE4 7PB	Melton Road	JCDecaux	
8241	Melton Road Adj 288 Lanesborough Road Global News	LE4 7SD	Melton Road	JCDecaux	18.08.21
8242	Melton Road Adj Melton Avenue	LE1 3FG	Melton Road	JCDecaux	03.09.21
8475	Melton Road Adj Windsor Avenue	LE2 1SY	Melton Road	N/A	
8468	Melton Road Opp 20 & 22 Melton Road	LE2 0QT	Melton Road	JCDecaux	17.03.21

Currently being installed					
Site No.	Address	Postcode	Street	Current	Date installed
8245	Melton Road Opp 74 Melton Road O/S Machine Mart	LE4 7SZ	Melton Road	JCDecaux	11.08.21
8246	Melton Road Opp Alderton Close	LE4 7PA	Melton Road	JCDecaux	
8432	Melton Road Opp Jacklin Drive	LE2 9RJ	Melton Road	JCDecaux	
8244	Melton Road Opp Melton Avenue	LE4 5EB	Melton Road	JCDecaux	15.10.21
8247	Melton Road Opposite Oakland	LE2 9RX	Melton Road	JCDecaux	
8433	Monmouth Drive Adj Salked Road	LE2 3YH	Monmouth Drive	Council	
8248	Monmouth Drive Opposite Tilford Crescent	LE3 0BN	Monmouth Drive	JCDecaux	
8252	Narborough Road Adj Imperial Avenue	LE3 1GP	Narborough Road	JCDecaux	04.02.21
8250	Narborough Road Adj Mountcastle	LE3 0PD	Narborough Road	JCDecaux	
8251	Narborough Road Adj Noel Street	LE3 2QR	Narborough Road	JCDecaux	
8253	Narborough Road Adj Premier Inn	LE1 1FN	Narborough Road	JCDecaux	
8249	Narborough Road Adj Ruding Road	LE3 2RA	Narborough Road	JCDecaux	24.08.21
8084	Narborough Road Opp 177 Narborough Road	LE3 0BT	Narborough Road	JCDecaux	04.11.21
8080	Narborough Road Opp 198 Narborough Road Dhaka Deli	LE3 0DL	Narborough Road	JCDecaux	03.03.21
8085	Narborough Road Opp Equity Road	LE3 9ED	Narborough Road	JCDecaux	10.03.21
8060	Narborough Road Opp Somerville	LE3 2RD	Narborough Road	JCDecaux	
8259	Narborough Road Outside Kfc	LE2 0HB	Narborough Road	JCDecaux	
8260	Nedham Street Adj 125 Nedham Street	LE5 1NQ	Nedham Street	JCDecaux	01.12.21
8262	Netherhall Road Opp 126 Netherhall Road	LE5 1RP	Netherhall Road	JCDecaux	10.11.21
8261	Netherhall Road Opp 250 Netherhall Road	LE5 1DR	Netherhall Road	JCDecaux	03.11.21
8263	Netherhall Road Opp Ivychurch	LE3 9SR	Netherhall Road	JCDecaux	05.11.21
8266	New Parks Way Adj 93 New Parks Boulevard	LE3 9SR	New Parks Way	JCDecaux	24.11.21
8264	New Parks Way Adj Kemp Road	LE3 9SB	New Parks Way	JCDecaux	25.11.21
8265	New Parks Way Opp Fire Station	LE3 9SB	New Parks Way	JCDecaux	25.11.21
8267	New Parks Way Opposite Kemp Road	LE5 1LA	New Parks Way	JCDecaux	29.11.21
8268	New Romney Crescent Adj 18 New Romney Crescent	LE5 1NG	New Romney Crescent	JCDecaux	27.10.21
8269	New Romney Crescent Opp 26 New Romney Crescent	LE4 7RL	New Romney Crescent	JCDecaux	29.10.21
8270	Nicklaus Road Opp Trevino Drive	LE5 2ES	Nicklaus Road	JCDecaux	18.10.21
8271	Ocean Road Opp 137 Ocean Road	LE1 2PN	Ocean Road	JCDecaux	27.10.21
8272	Ottawa Road Opp Brunswick Street	LE2 3YJ	Ottawa Road	JCDecaux	12.11.21
8273	Overdale Road Opp 37 Overdale Road	LE4 0JD	Overdale Road	JCDecaux	22.12.21
8434	Overdale Road W Bound Kingsmead Road	LE2 9BN	Overdale Road	Council	
8274	Parker Drive Outside 15 Support For Retail	LE2 9BS	Parker Drive	JCDecaux	
8435	Pasley Road Adj Opp Cooper House Entrance	LE2 1WQ	Pasley Road	Council	
8275	Pasley Road Opp Lydall Road	LE2 6GF	Pasley Road	JCDecaux	
8279	Petworth Drive Opp Nisa	LE3 9RF	Petworth Drive	N/A	
8280	Petworth Drive Outside 1a Petworth Drive	LE3 9RL	Petworth Drive	JCDecaux	15.09.21
8281	Pindar Road Adj Gillman Road	LE1 6BT	Pindar Road	JCDecaux	08.11.21
8436	Queens Road Adj Howard Road	LE5 1BL	Queens Road	Council	
8476	Queens Road N Bound 105 Queens	LE2 1ZH	Queens Road	JCDecaux	
8283	Queens Road N Bound Northcote	LE2 3LU	Queens Road	JCDecaux	03.12.21
8284	Ratcliffe Road W Bound Elms Road	LE4 2JD	Ratcliffe Road	N/A	
8285	Redhill Way Opp 17 Belgrave Boulevard	LE1 1HA	Redhill Way	JCDecaux	08.11.21
8055	Rutherford Road Stand F The Keepers Lodge	LE4 1DF	Rutherford Road	JCDecaux	17.02.21
8287	Rutherford Road Stand G The Keepers Lodge	LE1 1FN	Rutherford Road	JCDecaux	24.08.21
8343	Rutland Street Stand Ek 7-9 Rutland Street	LE5 4DN	Rutland Street (Double)	JCDecaux	25.06.21
8289	Saffron Lane Adj 193a Saffron Lane	LE2 6UN	Saffron Lane	JCDecaux	
8292	Saffron Lane Adj Grace Road	LE2 6SB	Saffron Lane	JCDecaux	19.08.21
8293	Saffron Lane Near Saffron Lane Wmc	LE2 6UE	Saffron Lane	JCDecaux	27.08.21
8291	Saffron Lane Opp 516 Saffron Lane	LE2 6LX	Saffron Lane	JCDecaux	01.09.21
8290	Saffron Lane Opp 562 Saffron Lane	LE2 6NL	Saffron Lane	JCDecaux	24.09.21
8294	Saffron Lane Opp Grace Road	LE2 6UG	Saffron Lane	JCDecaux	17.08.21
8295	Saffron Lane Opposite 455 Saffron Lane O/S Tesco E	LE2 6UD	Saffron Lane	JCDecaux	22.09.21
8297	Saffron Lane Outside 372 Saffron Lane	LE5 1TU	Saffron Lane	JCDecaux	03.09.21
8296	Saffron Lane Outside Flats 243 - 249	LE2 6LX	Saffron Lane	JCDecaux	01.09.21
8298	Sandhills Avenue Opp Hamilton Way & Thurmaston Lne	LE5 1QN	Sandhills Avenue	JCDecaux	
8299	Sandhills Avenue Opp Hope Hamilton School	LE5 1QJ	Sandhills Avenue	N/A	
8300	Sandhills Avenue Opp Shipton Road	LE1 4BR	Sandhills Avenue	N/A	
8301	Sanvey Gate Pasture Lane	LE5 1HW	Sanvey Gate	JCDecaux	
8387	Savoy Street	LE1	Savoy Street	N/A	
8388	Savoy Street	LE1	Savoy Street	N/A	
8389	Savoy Street	LE1	Savoy Street	N/A	
8302	Scraptoft Lane Adj Barbara Avenue	LE5 2HT	Scraptoft Lane	JCDecaux	08.09.21
8303	Scraptoft Lane Opp 234 Scraptoft Lane	LE4 0JZ	Scraptoft Lane	JCDecaux	01.09.21
8437	Service Road Stand 1 Hamilton Tesco	LE5 1BL	Service Road	Council	
8438	Service Road Stand 2 Hamilton Tesco	LE5 1BL	Service Road	Council	
8439	Service Road Stand 3 Hamilton Tesco	LE5 6GL	Service Road	Council	
8304	Somerset Avenue Adj The John O	LE2 0TW	Somerset Avenue	N/A	
8305	Sparkenhoe Street Adj St Peters Health Centre	LE2 0TW	Sparkenhoe Street	JCDecaux	
8306	Sparkenhoe Street Opp St Peters Health Centre	LE5 6HJ	Sparkenhoe Street	JCDecaux	
8307	Spencefield Lane Opp 154 Spencefield Lane	LE3 5LU	Spencefield Lane	JCDecaux	
8440	Spencefield Lane Opp Goodwood	LE2 1DD	Spencefield Lane	Council	
8308	St Augustine Road Stand F West	LE1 1FB	St Augustine Road	JCDecaux	01.09.21
8087	St Nicholas Circle Stand B Guildhall Lane	LE1 5NS	St Nicholas Circle (Double)	JCDecaux	
8088	St Nicholas Circle Stand Fc Guildhall Lane	LE1 5NS	St Nicholas Circle (Double)	JCDecaux	
8089	St Nicholas Circle Stand Fd Guildhall Lane	LE1 4JB	St Nicholas Circle (Double)	JCDecaux	
8312	St Peters Lane Stand Aa Church Gate	LE1 4GH	St Peter's Lane	JCDecaux	08.09.21
8313	St Peters Lane Stand Ab New Bond Street	LE1 4GH	St Peter's Lane	JCDecaux	08.09.21
8314	St Peters Lane Stand Ak Church Gate	LE2 1DB	St Peter's Lane	JCDecaux	03.09.21
8441	St Peters Road After Laurel Road	LE1 2JP	St Peters Road	Council	
8316	St Peters Road Opposite 24 St Peters Road	LE5 4PG	St Peters Road	N/A	
8315	St Peters Road Outside 36 St Peters	LE2 1DA	St Peter's Road	JCDecaux	
8317	St Saviours Road Opp 462 St Saviours Road	LE5 4JA	St Saviour's Road	JCDecaux	
8320	Stephenson Drive Adj Samson Road	LE3 5EZ	Stephenson Drive	JCDecaux	
8321	Stephenson Drive W Bound Childrens Playground	LE2 6SP	Stephenson Drive	JCDecaux	24.11.21
8322	Stonesby Avenue Adj Trenant Road	LE4 0UL	Stonesby Avenue	JCDecaux	
8323	Strasbourg Drive Adj Butterwick Drive	LE4 0WD	Strasbourg Drive	JCDecaux	02.12.21
8324	Strasbourg Drive Opp Heacham Drive	LE4 0SJ	Strasbourg Drive	N/A	
8325	Strasbourg Drive Opposite Butterwick Drive	LE2 9AG	Strasbourg Drive	JCDecaux	29.11.21
8326	Sturdee Road Adj Garnett Crescent	LE2 9ED	Sturdee Road	JCDecaux	03.12.21
8327	Sturdee Road Opp 46 Sturdee Road	LE2 9EE	Sturdee Road	JCDecaux	24.11.21
8328	Sturdee Road Opp 84 Sturdee Road	LE2 9FZ	Sturdee Road	JCDecaux	10.11.21
8329	Sturdee Road Outside 259 Sturdee Road	LE5 0JG	Sturdee Road	JCDecaux	26.11.21
8330	Tailby Avenue Adj Claydon Road	LE3 8NB	Tailby Avenue	JCDecaux	
8331	Tatlow Road Opp 53 Tatlow Road	LE1 2JN	Tatlow Road	JCDecaux	
8332	Taylor Road Adj Primary School	LE5 1DU	Taylor Road	JCDecaux	01.11.21
8442	Taylor Road Opp Primary School	LE2 6LN	Taylor Road	Council	
8333	Tennis Court Drive Adj 102 Tennis Court Drive	LE2 6LQ	Tennis Court Drive	JCDecaux	01.11.21
8334	The Fairway Opp Boulder Lane	LE2 6SA	The Fairway	N/A	

Currently being installed					
Site No.	Address	Postcode	Street	Current	Date installed
8335	The Fairway Outside 2 The Fairway	LE5 4LJ	The Fairway	JCDecaux	22.10.201
8443	The Fairway Outside St Christophers Centre	LE4 9TZ	The Fairway	Council	
8337	Thurcaston Road Nw Bound Abbey	LE4 2QB	Thurcaston Road	JCDecaux	01.11.21
8338	Thurcaston Road Se Bound Public Open Space	LE5 2NG	Thurcaston Road	JCDecaux	10.11.21
8339	Thurrcourt Road Adj The Stirrup Cup	LE1 7RD	Thurrcourt Road	JCDecaux	02.12.21
8483	Tilling Road at junction with Home Farm Walk	LE4 0UZ	Tilling Road	JCDecaux	21.09.21
8340	University Road Adj Entrance To University	LE2 6BF	University Road	JCDecaux	04.02.21
8341	University Road N Bound Welford Road Junction	LE1 7RH	University Road	JCDecaux	16.08.21
8446	University Road Opp Cemetery On Lamp Post No 34	LE1 7PG	University Road	Council	
8342	University Road Opp Mayors Walk	LE1 1RB	University Road	JCDecaux	17.08.21
8447	University Road Outside De Montfall	LE5 6QA	University Road	Council	
8445	University Road Adj University	LE1 7RD	University Road	Council	
8480	Uppingham Road Adj 203 Uppingham Road Delhi Cious	LE5 4DG	Uppingham Road	JCDecaux	
8481	Uppingham Road Adj 247 Uppingham Road Co-Op	LE5 0QD	Uppingham Road	JCDecaux	10.03.21
8448	Uppingham Road Adj Downing Drive	LE5 2PD	Uppingham Road	Council	
8346	Uppingham Road Adj Martival Road	LE5 OPU	Uppingham Road	JCDecaux	
8449	Uppingham Road Adj Silverwood	LE5 6HT	Uppingham Road	Council	
8450	Uppingham Road Adj Spencefield	LE5 2GE	Uppingham Road	Council	
8347	Uppingham Road Opp 104b Uppingham Road Conv Store	LE5 0QD	Uppingham Road	JCDecaux	16.11.21
8482	Uppingham Road Opp 214 Uppingham Road	LE5 4DG	Uppingham Road	JCDecaux	17.03.21
8348	Uppingham Road Opp 8 Uppingham Road O/S Park	LE5 4BL	Uppingham Road	JCDecaux	18.11.21
8351	Uppingham Road Opp Humberstone Park	LE5 3TB	Uppingham Road	JCDecaux	
8451	Uppingham Road Opp St Swithins	LE2 6AB	Uppingham Road	Council	
8349	Uppingham Road Opp Trafford Road	LE1 3PJ	Uppingham Road	JCDecaux	17.11.21
8352	Uppingham Road Outside 105a & 107	LE5 0QE	Uppingham Road	JCDecaux	
8353	Uppingham Road Outside 56 Uppingham Road	LE5 0RA	Uppingham Road	JCDecaux	22.11.21
8354	Uppingham Road Outside Humberstone Park	LE2 1XB	Uppingham Road	JCDecaux	18.11.21
8356	Victoria Park Opp Adderley Road Junction	LE5 0LL	Victoria Park Road	JCDecaux	19.11.21
8355	Victoria Park Road Before London	LE2 1WA	Victoria Park Road	JCDecaux	22.11.21
8357	Victoria Road East Opp 246 Victoria Road East	LE4 9EQ	Victoria Road East	JCDecaux	
8358	Victoria Road East 5 Bound Gipsy Lane	LE2 7LE	Victoria Road East	JCDecaux	22.11.21
8360	Walnut Street Opp 110 Walnut Street & Opp Flats	LE1 6LR	Walnut Street	JCDecaux	
8361	Waterloo Way Stand Eh Waterloo	LE1 1WB	Waterloo Way	N/A	27.04.21
8197	Welford Place Stand El Market Street	LE1 3GD	Welford Place	JCDecaux	
8192	Welford Place Stand Em York Road	LE3 5QP	Welford Place (Double)	JCDecaux	
8366	Welford Road Adj 497 Welford Road	LE2 6EP	Welford Road	JCDecaux	23.11.21
8369	Welford Road Adj Aberdale Road	LE2 6BL	Welford Road	JCDecaux	
8364	Welford Road Adj Donkey Pub	LE2 6BF	Welford Road	JCDecaux	10.09.21
8452	Welford Road Adj Ta Centre	LE2 6EG	Welford Road	Council	
8453	Welford Road After Clarendon Park	LE5 6TD	Welford Road	Council	
8367	Welford Road Opp 685 Welford Road	LE18 1JX	Welford Road	JCDecaux	26.11.21
8368	Welford Road Opp Highgate Drive	LE2 6FP	Welford Road	JCDecaux	08.10.21
8370	Welford Road Opp Police Station O/S Petrol Station	LE18 1JX	Welford Road	JCDecaux	03.09.21
8365	Welford Road Opposite University Car Park	LE2 6EJ	Welford Road	JCDecaux	
8371	Welford Road Outside 3 Highgate	LE2 6BL	Welford Road	JCDecaux	12.10.21
8372	Welford Road Outside 346 St Michael House	LE2 6BE	Welford Road	JCDecaux	05.11.21
8373	Welford Road Outside Sandiciffie	LE1 1WB	Welford Road	JCDecaux	12.11.21
8223	Welford Road Stand 1 Nelson Mandela Park	LE2 2PZ	Welford Road	JCDecaux	19.05.21
8375	Welford Road Stand 1 Regent Road	LE1 6YT	Welford Road	JCDecaux	19.11.21
8376	Welford Road Stand 2 Nelson Mandela Park	LE2 7AB	Welford Road	JCDecaux	06.10.21
8377	Welford Road Stand 2 Regent Road	LE1 6YT	Welford Road	JCDecaux	
8378	Welford Road Stand 3 Nelson Mandela Park	LE1 3PJ	Welford Road	JCDecaux	06.10.21
8196	Welford Road Stand Ep 23-25 Welford Road	LE1 5EA	Welford Road	JCDecaux	
8380	Welland Vale Road Opp 80 Welland Vale Road	LE3 1NB	Welland Vale Road	JCDecaux	09.11.21
8454	Wicklow Drive E Bound 199 Wicklow Drive	LE5 4RD	Wicklow Drive	Council	
8455	Wicklow Drive Opp 149 & 151 Wicklow Drive	LE5 6TD	Wicklow Drive	Council	
8456	Wicklow Drive W Bound 107 Wicklow Drive Post Off	LE5 4EB	Wicklow Drive	Council	
8457	Wicklow Drive W Bound 107 Wicklow Drive Post Off	LE2 6QY	Wicklow Drive	Council	
8458	Windley Road N Bound Meadow Gardens Junction	LE2 7LB	Windley Road	Council	
8381	Winstanley Drive Outside 123	LE3 5GE	Winstanley Drive	JCDecaux	10.11.21
8382	Woodgate Adj Woodgate Resources Centre	LE3 5GF	Woodgate	JCDecaux	
8383	Woodgate Opp 58 Woodgate Shades Hairdressers	LE3 1RN	Woodgate	JCDecaux	10.09.21
8385	Wycombe Road Adj Humberstone Medical Centre	LE4 7HF	Wycombe Road	N/A	
8386	Wyvern Avenue Adj 6 & 8 Wyvern Avenue	LE3 9JG	Wyvern Avenue	JCDecaux	
Additional/Alternative locations to above to make up contract total					
count	26				
Site	Address	Post Code	Notes		
269034075	Saffron Lane - outside 145/147, before Hawkins Drive	LE2 7NA	JCD Ad Shelter present		
269034074	Saffron Lane opposite Hawkins Drive	LE2 7NA	JCD Ad Shelter present		
269040048	Featherstone Drive - near Henray Avenue	LE2 9RB	JCD non-Ad shelter present		
269036017	Coleman Road - entrance to General Hospital	LE5 4EN	JCD non-Ad shelter present		
269053076	Victoria Road East - adjacent to Lewisher Road	LE4 9LJ	JCD Ad Shelter present		
269053075	Victoria Road East - opposite Lewisher Road	LE4 9LJ	JCD Ad Shelter present		
269041040	Maidenwell Avenue - 20m after Hazledene Rd	LE5 1UB	JCD non-Ad shelter present		
269041074	Maidenwell Avenue - 20m after Sundew Rd	LE5 1RW	JCD non-Ad shelter present		
269047042	Gleneagles Avenue - in front of 205	LE4 7YJ	JCD non-Ad shelter present		
269047035	Gleneagles Avenue - opposite Braemar Drive	LE4 7YJ	Clr request		
269034081	Victoria Park Road - in front of Health Centre	LE1 7RJ	JCD non-Ad shelter present		
269032018	Astill Lodge Road near Maplewell Drive	LE4 1BL	JCD non-Ad shelter present		
269046032	Gooding Avenue - outside No 1	LE3 1BR	JCD non-Ad shelter present		
269047005	Melton Road - opposite Rushey Mead College	LE4 7SL	JCD Ad shelter present		
269044049	Ryder Road - terminus stop	LE3 6TA	Passenger & Bus Co request		
269054017	Aberdale Road - near Tesco Express	LE2 6GB	JCD non-Ad shelter present		
269032084	Calver Hey Road - 40m after Milton Crescent	LE4 0PE	JCD non-Ad shelter present		
269032095	Glenfield Hospital	LE3 9QP	LCC shelter present - need to liaise with hospital		
269030051	Somerset Avenue - north side near junction with Wiltshire Road	LE4 0JZ	S106 request site		
269032057	Heacham Drive - south side near Lomond Crescent	LE4 0RJ	S106 request site		
269032058	Heacham Drive - west side near Linney Road	LE4 1AG	S106 request site		
269032010	Bennion Road, Stand C in front of Beaumont Shopping Centre	LE4 1DF	JCD Ad Shelter present		
269055019	Hinkley Road outside 465, Church, before Narborough Road	LE3 0TA	JCD non-Ad shelter present		
269043028	Beaumont Leys Lane outside 163, before Walkway	LE4 2BF	JCD non-Ad shelter present		
269032053	Tilling Road at junction with Home Farm Walk	LE4 0UZ	JCD non-Ad shelter present		
269056025	Aikman avenue outside 197 after junction with Pindar Road	LE3 9PW	No shelter present		

Annex 6 Bus shelter maintenance contract

Bus shelter contract : Clear Channel and Leicester City Council

Contract extract relating to maintenance

- 62.1 The Concessionaire shall at its cost, maintain and clean all Structures in accordance with the requirements of the Specification.
- 62.2 In the event that any Structure needs replacing or repairs, the Concessionaire shall undertake such repairs and maintenance within the timescales prescribed within this Contract and such repairs and/or maintenance shall include but not be limited to:
- 62.2.1 repairing any Structure (or part of a Structure) and fixings (save where such illumination is specifically described as Investment Work) the illumination of existing Structures (including the associated costs of new wiring fundamental to the illumination);
 - 62.2.2 painting and other decoration;
 - 62.2.3 other cosmetic activities including the removal of graffiti, dust, stickers, fly-posters and other litter from the Structures;
 - 62.2.4 cleaning of the Structures;
 - 62.2.5 repairs and renewals required as a result of acts of vandalism or weather damage;
 - 62.2.6 illumination repairs (replacement of components such as ballasts, RCDs, tubes)
 - 62.2.7 replacement of bulbs, lighting, screens, engines and electrical devices following their expiry or when they are beyond economic repair;
 - 62.2.8 provision of digital support services; and
 - 62.2.9 any other work undertaken to ensure that the Structure maintains its standard of performance.
- 62.3 The Concessionaire shall, by no later than the end of the third Concession Year and at least once every three (3) years thereafter, undertake detailed surveys of Structures and Sites in accordance with the Specification and other reasonable requirements of the Council. The Concessionaire shall prepare detailed inspection reports recording the condition of each Structure and the maintenance, repairs, replacement or renewals required to ensure that each Structure is kept to a standard equivalent to new, save for reasonable wear and tear (**Detailed Inspection Report**). If the Concessionaire fails for any reason to undertake surveys and prepare any of the Detailed Inspection Reports in accordance with this Clause 62.3, the Council shall be entitled to do so (itself or using one or more contractors) and its costs of so doing (as notified by the Council to the Concessionaire) shall be borne by the Concessionaire.
- 62.4 The Concessionaire acknowledges that the maintenance and cleaning obligations under

this Contract will be subject to quality inspections undertaken by the Council, and that in the event that the Council reasonably considers that the Concessionaire has failed to clean and maintain the Structures in accordance with this Contract, it will upon being directed to do so by the Council, at its own cost, take steps to ensure that the Structures are cleaned and maintained in accordance with the terms of this Contract.

- 62.5 During the Contract Period the Concessionaire shall make updates to the Site Schedule as and when the Sites and/or Structures change in accordance with the terms of this Contract, and as otherwise agreed between the Parties, to ensure that it is kept as up-to-date, complete and accurate as possible. The Concessionaire shall provide an updated version of the Site Schedule to the Council on a six monthly basis during the Contract Period.
- 62.6 The Concessionaire shall maintain detailed files in relation to each Site, including copies of any Detailed Inspection Reports. All information in such files shall belong to the Council and the Concessionaire shall transfer copies of all such files to the Council promptly on request.
- 62.7 The Council shall be responsible for maintaining that part of the highway upon which the Structure is erected and the highway around the Structure and for collecting litter and for the leaving the highway in a clean and tidy condition.
- 62.8 The Concessionaire shall on the Council's request, promptly remove and reinstate, so far as reasonably practicable, any Structure in the event that such removal is reasonably required by the Council in order that the Council can deal with any emergency situation and/or undertake its statutory or other public function as highway authority. For the avoidance of doubt, any works required by the Council pursuant to this Clause 62.8 shall be undertaken at the Council's cost, such costs to be reasonable. If any costs are due from the Council pursuant to this Clause 62.8, the Concessionaire shall submit an invoice to the Council within thirty (30) Calendar Days of completing the works requested, and payment by the Council shall be within thirty (30) Calendar Days of receipt of the Concessionaire's invoice.
- 62.9 If the Concessionaire shall unreasonably refuse to comply with a request received from the Council pursuant to Clause 62.8, the Concessionaire shall indemnify the Council in respect of all liabilities incurred or suffered by the Council that the Council would not have suffered or incurred but for the Concessionaire's refusal to comply.
- 62.10 The Council shall not be liable to the Concessionaire for any damage to such Structure caused by such removal and reinstatement.

Contained within the specification document

9. Maintenance Regime

The date of commencement of the maintenance phase for the New Street Furniture shall be from the date of installation of the item of street furniture for so long as the item is installed until removed in accordance with the Contract. It shall be so maintained throughout the term of the Contract.

The Concessionaire shall be responsible for maintaining an asset management system and records of all the New Street Furniture installed along with electrical connection, technology and advertising information. This is to be shared with the Council.

The Concessionaire shall, at its own expense, inspect and wash all New Street Furniture and provide a full maintenance and repair service on a regular basis, to the satisfaction of the Council and include:

- a) Fortnightly inspection cycle including repairs to paintwork;
- b) Fortnightly wash cycle to include roofs of New Bus Shelters ensuring rainwater drains from the roof;
- c) Weekly wash cycle for city centre New Bus Shelters to include roofs of shelters (see Appendix 1);
- d) Fully repairing non-urgent faults within five days of notification;
- e) Removal of racist or obscene graffiti/flyposting within six hours of notification
- f) Removal of non-racist or non-obscene graffiti/flyposting within 48 hours of notification;
- g) Repair of faults to lighting within two working days of notification;
- h) Replacing defective screws in information display cases - check on each visit.

Where a real time information display is fitted to a New Bus Shelter and where there are bus stop flags, the Concessionaire will be required to clean these units in an appropriate manner, but responsibility for maintenance will lie elsewhere.

The Concessionaire shall provide an emergency maintenance service for Existing Bus Shelters and New Bus Shelters, which shall apply where a bus shelter is so damaged or unsafe as to be a danger to pedestrians, traffic, or property, including glass and debris removal or to remove racist or obscene graffiti or any noxious substances. In such cases, the Site should be attended to within six hours of notification from the Council.

On occasions it may be necessary for the Council to deal with what is in their view an extreme emergency situation. In such circumstances the reasonable costs of attendance by the Council will be paid by the Concessionaire, provided it is notified of the Council's action within three working days and is invoiced within 12 weeks of the date of such emergency action.

In extraordinary cases where a New Bus Shelter is subject to persistent damage, the Concessionaire shall alter the material of the panels of the shelter so as to make it more durable.

An emergency telephone number for repairs or maintenance to the New Bus Shelters shall be publicly displayed on the information display case.

Any New Bus Shelters damaged beyond repair on site that need to be removed should be replaced within one month of the incident occurring.

Annex 7 Bus Stop Totems

Bus Stop Totems				
Contract nos: 1025				
These will be located at those stops listed below, subject to consultation and survey.				
Bus Stop locations to survey - mainlines and greenlines stops.				
Count	988			
ATCO Code	Stop Name	Bearing	SMS Code	Street Name
269045057	Westover Road	NW	lecdpmtd	Braunstone Lane
269045056	Sun Way	NW	lecdpmta	Braunstone Lane
269070102	Cantrell Road	NW	lecdpjjj	Meadwell Road
269070165	Meadwell Road	N	lecdmjtm	Meadwell Road
269045003	Wyatt Close	SW	lecdjgtg	Hinckley Road
269045044	Holmfield Avenue East	SE	lecdgmpw	Braunstone Lane
269045045	Beech Drive	SE	lecdgmta	Braunstone Lane
269045046	Sun Way	SE	lecdgmtd	Braunstone Lane
269045047	Westover Road	SE	lecdgmtg	Braunstone Lane
269045058	Cressida Court	NW	lecdpmtg	Braunstone Lane
269045048	Bidford Road	SE	lecdgmtj	Braunstone Lane
269045029	Braunstone Avenue	NW	lecdadwp	Cort Crescent
269045030	Woodshawe Rise	N	lecdadwt	Cort Crescent
269045031	Bendbow Rise	N	lecdagad	Cort Crescent
269045032	Football Pitches	N	lecdagag	Cort Crescent
269045033	Hockley Farm Road	N	lecdagaj	Cort Crescent
269045001	Braunstone Way	W	lecdapgm	Hinckley Road
269045002	Avery Hill	W	lecdjgtd	Hinckley Road
269045059	Wyatt Close	NE	lecdptaw	Hinckley Road
269045004	Golf Course Lane	E	lecdjgtj	Hinckley Road
269045005	Avery Hill	E	lecdjgtm	Hinckley Road
269045006	Braunstone Way	E	lecdjgtp	Hinckley Road
269044039	Chevin Avenue	W	lecdmdmd	Scudamore Road
269044040	Fulford Road	W	lecdmdmg	Scudamore Road
269044046	Belfry Drive	N	lecdmdpd	Fulford Road
269044047	Glenrothes Close	W	lecdmdpg	Fulford Road
269044048	Ryder Road	W	lecdmdpj	Fulford Road
269044049	Ryder Road Shops	SE	lecdmdpm	Ryder Road
269044044	Ryder Road	E	lecdmdmw	Scudamore Road
269044045	Chevin Avenue	E	lecdmdpa	Scudamore Road
269044026	Outwood Close	N	lecdjmdg	Liberty Road
269044027	Cokayne Road	N	lecdjmdj	Liberty Road
269044033	Liberty Road	W	lecdjmat	Tatlow Road
269044034	Tournament Road	W	lecdjmaw	Tatlow Road
269070073	Forbes Close	S	lecdjimp	Tournament Road
269070191	Tournament Road	E	lecdajga	Tatlow Road
269044028	Tatlow Road	N	lecdjmdm	Liberty Road
269044029	Tatlow Road	S	lecdjmdp	Liberty Road
269044030	Sacheverel Road	S	lecdjmdt	Liberty Road
269044031	Cokayne Road	S	lecdjmam	Liberty Road
269044032	Outwood Close	S	lecdjmap	Liberty Road
269044017	New Parks Way	NW	lecdjdt	Dominion Road
269044018	Musson Road	W	lecdgjd	Dominion Road
269044019	Veterinary Surgery	W	lecdjgga	Dominion Road
269044020	Veterinary Surgery	E	lecdjgig	Dominion Road
269044022	Knowles Road	N	lecdjgim	Charnor Road
269044023	Speers Road	N	lecdjgip	Charnor Road
269044024	Speers Road	S	lecdjgjt	Charnor Road
269044025	Knowles Road	S	lecdjgkw	Charnor Road
269044021	New Parks Way	SE	lecdjgjl	Dominion Road
269044002	Aikman Avenue	N	lecdmtjp	New Parks Way
269044003	Kemp Road	N	lecdmtjt	New Parks Way
269044001	Glenfield Hospital	W	lecdmtjm	Grobby Road
269032095	Glenfield Hospital	N	lecdmgmj	East Service Road
269032089	Glenfield Hospital	W	lecdgdpw	South Service Road
269032096	Glenfield Hospital	E	lecdmgmp	Grobby Road
269032097	Gilroes Cemetery	SE	lecdmgmt	Grobby Road
269032098	Heathley Park Drive	SE	lecdmgmw	Grobby Road
269032099	Darlington Road	SE	lecdmgpa	Grobby Road
269032100	Mary Road	SE	lecdmgpd	Grobby Road
269050016	Garland Crescent	SE	lecdmgwa	Grobby Road
269050017	Fosse Road Corner	E	lecdmgwd	Grobby Road
269050018	Dunton Street	E	lecdmgwg	Woodgate
269050019	Abbey Gate	E	lecdmgwj	Woodgate
269030019	Slater Street	S	lecdjamp	Frog Island
269030018	Slater Street	N	lecdjamj	Frog Island
269050014	Dunton Street	W	lecdmgtp	Woodgate
269050015	Fosse Road Corner	W	lecdmgtw	Grobby Road
269056032	Garland Crescent	NW	lecdatwa	Grobby Road
269056033	Mary Road	NW	lecdatwd	Grobby Road
269056034	Darlington Road	W	lecdatwg	Grobby Road
269056035	Heathley Park Drive	W	lecdatwj	Grobby Road
269044000	Gilroes Cemetery	NW	lecdmtjg	Grobby Road
269044004	Kemp Road	S	lecdmtjw	New Parks Way
269044005	Aikman Avenue	S	lecdmtma	New Parks Way
269044010	Fire Station	E	lecdgiat	Aikman Avenue
269056024	Kay Road	SE	lecdatmw	Aikman Avenue
269056025	Pindar Road	SE	lecdatpa	Aikman Avenue
269056026	Aikman Close	SE	lecdatpd	Aikman Avenue
269056027	Coates Avenue	SE	lecdatpg	Aikman Avenue
269056028	Mossgate	SE	lecdatpj	Aikman Avenue
269056029	Crawford Road	SE	lecdatpm	Aikman Avenue
269056030	Sandhurst Road	SE	lecdatpt	Aikman Avenue
269056017	Henley Road	NE	lecdatjw	Petworth Drive
269056031	Fosse Road North	E	lecdatpw	Henley Road
269050008	Pool Road	N	lecdajwg	Fosse Road North
269050009	Beatrice Road	N	lecdajwj	Fosse Road North
269050010	Central Road	N	lecdajwm	Fosse Road North
269050011	Central Road	S	lecdmgtg	Fosse Road North

ATCO Code	Stop Name	Bearing	SMS Code	Street Name
269050012	Beatrice Road	S	lecdmgtj	Fosse Road North
269050040	Pool Road	S	lecdjagd	Fosse Road North
269050006	Fosse Road North	W	lecdajwa	Henley Road
269056016	Henley Road	NW	lecdatjt	Petworth Drive
269056018	Sandhurst Road	NW	lecdatma	Aikman Avenue
269056019	Crawford Road	NW	lecdatmd	Aikman Avenue
269056020	Mossgate	NW	lecdatmg	Aikman Avenue
269056021	Adcock Road	NW	lecdatmj	Aikman Avenue
269056022	Coates Avenue	NW	lecdatmp	Aikman Avenue
269056023	Aikman Close	NW	lecdatmt	Aikman Avenue
269044006	Pindar Road	NW	lecdmtmd	Aikman Avenue
269044007	Pindar Road	NW	lecdmtmg	Aikman Avenue
269044008	The Good Neighbours	W	lecdmtmj	Aikman Avenue
269044009	Fire Station	W	lecdgjap	Aikman Avenue
269044015	Greencoat Road	E	lecdgjd	Glenfield Road
269044016	West Gate School	SE	lecdgjd	Glenfield Road
269056013	Letchworth Road	E	lecdmjad	Glenfield Road
269056014	Westfield Road	E	lecdmjag	Glenfield Road
269056015	Ambrose Close	SE	lecdmjaj	Glenfield Road
269050000	Woodville Road	E	lecdajtd	Glenfield Road
269050001	Muriel Road	E	lecdajtg	Glenfield Road
269050002	Flora Street	E	lecdajtj	Glenfield Road
269050003	Kate Street	E	lecdajtm	King Richards Road
269050004	Tudor Road	E	lecdajtp	King Richards Road
269050005	West Bridge	E	lecdajtw	St Augustine Road
269050001	Tudor Road	W	lecdgtpw	King Richards Road
269050003	Flora Street	W	lecdgtwd	Glenfield Road
269056008	St Paul's Church	W	lecdjtdwm	Glenfield Road
269056009	Muriel Road	W	lecdjtdwp	Glenfield Road
269056010	Woodville Road	W	lecdjtdwt	Glenfield Road
269056049	Ambrose Close	W	lecdagmt	Glenfield Road
269056011	Westfield Road	W	lecdjgad	Glenfield Road
269056012	Letchworth Road	W	lecdjgag	Glenfield Road
269044013	West Gate School	NW	lecdjgdg	Glenfield Road
269044014	Greencoat Road	W	lecdjgdj	Glenfield Road
269045007	Braunstone Leisure Centre	E	lecdjgtw	Hinckley Road
269056004	Western Park	E	lecdjdw	Hinckley Road
269056005	Sunnycroft Road	E	lecdjdw	Hinckley Road
269056006	Dovelands School	E	lecdjdwg	Hinckley Road
269056007	Mostyn Street	E	lecdjdwj	Hinckley Road
269055017	Dulverton Road	E	lecdjpta	Hinckley Road
269055018	Fosse Road	E	lecdjptd	Hinckley Road
269055019	Narborough Road	SE	lecdjptg	Hinckley Road
269055013	Narborough Road	NW	lecdjpmj	Hinckley Road
269055014	Tyndale Street	NW	lecdjpmj	Hinckley Road
269055015	Fosse Road	W	lecdjpm	Hinckley Road
269055016	Dulverton Road	W	lecdjpmw	Hinckley Road
269055002	Mostyn Street	W	lecdgtwa	Hinckley Road
269056000	Frampton Avenue	W	lecdjdtj	Hinckley Road
269056001	Dovelands School	W	lecdjdtm	Hinckley Road
269056002	Sunnycroft Road	W	lecdjdtj	Hinckley Road
269056003	Western Park	W	lecdjdtw	Hinckley Road
269045000	Braunstone Leisure Centre	W	lecdapgj	Hinckley Road
269045024	Hockley Farm Road	S	lecdgtgt	Cort Crescent
269045025	Football Pitches	S	lecdgtgw	Cort Crescent
269045026	Bendbow Rise	S	lecdgtja	Cort Crescent
269045027	Woodshawe Rise	S	lecdadwj	Cort Crescent
269045028	Braunstone Avenue	SE	lecdadwm	Cort Crescent
269046026	Hallam Crescent East	NE	lecdmjg	Waltham Avenue
269046027	New Fields Avenue	NE	lecdadjp	Waltham Avenue
269046028	Folville Rise	NE	lecdadjt	Waltham Avenue
269046031	Gooding Avenue	S	lecdadmd	Folville Rise
269046032	Fulhurst Avenue	SE	lecdadmg	Gooding Avenue
269046033	Fulhurst Avenue	NW	lecdadmj	Gooding Avenue
269046029	New Fields Avenue	SW	lecdadjw	Waltham Avenue
269046030	Hallam Crescent East	SW	lecdadma	Waltham Avenue
269046018	Reynolds Place	E	lecdmjmd	Hallam Crescent East
269046019	Caldecote Road	E	lecdmjmg	Hallam Crescent East
269046020	Hallam Crescent East	E	lecdmjmj	Hallam Crescent East
269046024	Caldecote Road	W	lecdmjpa	Hallam Crescent East
269046025	Reynolds Place	W	lecdmjpd	Hallam Crescent East
269046006	Jaguar Garage	NE	lecdmjdm	Narborough Road
269046007	Somerville Road	NE	lecdmjdp	Narborough Road
269046008	Dumbleton Avenue	NE	lecdmjdt	Narborough Road
269046009	Fullhurst Avenue	NE	lecdmjdw	Narborough Road
269046010	Hopefield Road	NE	lecdmjga	Narborough Road
269046011	Imperial Avenue	NE	lecdmjgd	Narborough Road
269055009	Stuart Street	N	lecdgwad	Narborough Road
269055010	Equity Road	N	lecdgwag	Narborough Road
269055011	Gaul Street	N	lecdgwaj	Narborough Road
269055012	Ruding Road	N	lecdgwam	Narborough Road
269055030	Hinckley Road	S	lecdjdpj	Fosse Road South
269055028	Westcotes Drive	N	lecdjdpj	Fosse Road South
269055031	Westcotes Drive	S	lecdjdpj	Fosse Road South
269055027	Beaconsfield Road	N	lecdjdmw	Fosse Road South
269055032	Ashleigh Road	S	lecdjdpj	Fosse Road South
269046037	Imperial Avenue	NE	lecdadpa	Fosse Road South
269046038	Imperial Avenue	SW	lecdadpd	Fosse Road South
269046039	Harlaxton Street	SW	lecdadpg	Fosse Road South
269046036	Harlaxton Street	NE	lecdadmw	Fosse Road South
269055021	New Park Street	N	lecdjptm	Duns Lane
269055022	New Park Street	SW	lecdjptp	Duns Lane
269055020	Foxon Street	NE	lecdjptj	Braunstone Gate
269055004	Ruding Road	S	lecdgtwg	Narborough Road
269055005	Gaul Street	S	lecdgtwj	Narborough Road
269055006	Noel Street	SW	lecdgtwm	Narborough Road
269055007	Westleigh Road	SW	lecdgtwp	Narborough Road
269046000	Hopefield Road	SW	lecdgmwg	Narborough Road
269046001	Fullhurst Avenue	SW	lecdgmwj	Narborough Road

ATCO Code	Stop Name	Bearing	SMS Code	Street Name
269046002	Dumbleton Avenue	SW	lecdgmwm	Narborough Road
269046003	Meredith Road	SW	lecdgmwp	Narborough Road
269046004	Rowley Fields Avenue	SW	lecdgmwt	Narborough Road
260003735	Sainsbury's	SW	leidtdaw	Narborough Road South
260003736	Sainsbury's	N	leidtdga	Narborough Road South
269031051	Gilmorton Avenue	S	lecdgawd	Lutterworth Road
269031053	Red House Road	S	lecdpmtj	Lutterworth Road
269031018	Red House Road	N	lecdagwg	Lutterworth Road
269031052	Gilmorton Avenue	N	lecdgawg	Lutterworth Road
269031019	Monsell Drive	N	lecdagwj	Lutterworth Road
269031020	Marsden Lane	NE	lecdagwm	Lutterworth Road
269031008	Wigston Lane	NE	lecdjmtd	Aylestone Road
269031009	Hall Lane	NE	lecdjmtg	Aylestone Road
269031010	Hampshire Road	NE	lecdjmtj	Aylestone Road
269031011	Grace Road	NE	lecdjmtm	Aylestone Road
269031012	Cavendish Road	N	lecdjmtp	Aylestone Road
269031013	Boundary Road	N	lecdjmtw	Aylestone Road
269031014	Gas Museum	NE	lecdjmwa	Aylestone Road
269034037	Saffron Lane	NE	lecdmadw	Aylestone Road
269034038	Raw Dykes Road	N	lecdgdjt	Aylestone Road
269034039	Sawday Street	N	lecdgdtm	Aylestone Road
269034056	Burnmoor Street	W	lecdjwgt	Walnut Street
269034057	Windermere Street	W	lecdjwgv	Walnut Street
269055024	Wilberforce Road	W	lecdjpwa	Upperton Road
269055025	Wilberforce Road	E	lecdjpwd	Upperton Road
269034058	Windermere Street	E	lecdjwja	Walnut Street
269034059	Burnmoor Street	E	lecdjwjd	Walnut Street
269034060	Walnut Street	E	lecdjwjg	Walnut Street
269034040	Walnut Street	N	lecdgdtp	Aylestone Road
269034041	Royal Infirmary Hospital	NW	lecdgdtd	Infirmary Road
269034043	Bonnars Lane	NW	lecdgdwd	Oxford Street
269034019	Tower Street	S	lecdjwpg	Welford Road
269034020	Tower Street	S	lecdjwpj	Welford Road
269034022	Nelson Mandela Park	S	lecdjwpt	Welford Road
269034023	Nelson Mandela Park	S	lecdjwpw	Welford Road
269034024	Nelson Mandela Park	S	lecdjwta	Welford Road
269034025	Tigers Way	S	lecdjwtd	Welford Road
269034065	Leicester College	W	lecdjwma	Almond Road
269034035	Freemen's Common	SW	lecdmadp	Aylestone Road
269034036	Saffron Lane	SW	lecdmadt	Aylestone Road
269031000	Gas Museum	S	lecdawtd	Aylestone Road
269031001	Boundary Road	S	lecdawtg	Aylestone Road
269031002	Cavendish Road	S	lecdawtj	Aylestone Road
269031003	Grace Road	SW	lecdawga	Aylestone Road
269031005	Hampshire Road	SW	lecdawgj	Aylestone Road
269031006	Hall Lane	SW	lecdawgm	Aylestone Road
269031007	Wigston Lane	SW	lecdjmtd	Aylestone Road
269031015	Middleton Street	SW	lecdjmwd	Lutterworth Road
269031016	Marsden Lane	SW	lecdjmwg	Lutterworth Road
269031017	Monsell Drive	S	lecdagwd	Lutterworth Road
269040008	Whitteney Drive	S	lecdamgm	Sturdee Road
269040009	Sturdee Green	S	lecdamgp	Sturdee Road
269040010	Ebchester Road	E	lecdamgt	Sturdee Road
269040011	Garnett Crescent	E	lecdamgw	Sturdee Road
269040012	Sturdee Close	E	lecdamja	Sturdee Road
269040040	Littlejohn Road	N	lecdapjm	Pasley Road
269040041	Lydall Road	N	lecdapjp	Pasley Road
269040042	Tamerton Road	N	lecdapjt	Pasley Road
269048015	Pasley Road	NE	lecdadga	Glenhills Way
269048016	Pasley Road	SW	lecdadgd	Glenhills Way
269040043	Tamerton Road	S	lecdapjw	Pasley Road
269040044	Lydall Road	S	lecdapma	Pasley Road
269040045	Littlejohn Road	S	lecdapmd	Pasley Road
269040013	The Exchange	E	lecdamjd	Sturdee Road
269040046	Allenwood Road	E	lecdapmg	Sturdee Road
269040000	Allenwood Road	W	lecdamdj	Sturdee Road
269040001	The Exchange	W	lecdamdmd	Sturdee Road
269040002	The Exchange	W	lecdamdmp	Sturdee Road
269040014	Community Centre	S	lecdamjg	Hillsborough Road
269040015	Eamont Close	S	lecdamjm	Hillsborough Road
269040016	Silsden Rise	SW	lecdamjp	Hillsborough Road
269040017	Swinford Avenue	W	lecdamjt	Hillsborough Road
269040018	Featherstone Drive	W	lecdamjw	Hillsborough Road
269040048	Henray Avenue	S	lecdmwmw	Featherstone Drive
269040026	Bus Turning Circle	E	lecdapta	Monmouth Drive
269040027	Tilford Crescent	NE	lecdaptd	Monmouth Drive
269040021	Silsden Rise	N	lecdampg	Hillsborough Road
269040022	Eamont Close	N	lecdapmj	Hillsborough Road
269040023	Community Centre	N	lecdapmp	Hillsborough Road
269040003	Sturdee Close	W	lecdamdt	Sturdee Road
269040004	Garnett Crescent	NW	lecdamdww	Sturdee Road
269040005	Ebchester Road	NW	lecdamga	Sturdee Road
269040006	Sturdee Green	N	lecdamgd	Sturdee Road
269040007	Whitteney Drive	N	lecdamgj	Sturdee Road
269048023	Glenhills Boulevard	N	lecdadjd	Aylestone Drive
269048024	Seaford Road	N	lecdadjj	Aylestone Drive
269048032	Montrose School	W	lecdpmdw	Wigston Lane
269048033	Paget Street	NW	lecdpmdg	Wigston Lane
269031050	Middleton Street	SE	lecdgawa	Wigston Lane
269048034	Paget Street	E	lecdpmdg	Wigston Lane
269048025	Belvoir Drive East	N	lecdadjm	Aylestone Drive
269048026	Burnaston Road	NE	lecdadad	Aylestone Drive
269048027	Burnaston Road	SW	lecdadag	Aylestone Drive
269048028	Belvoir Drive East	S	lecdpmdj	Aylestone Drive
269048029	Wigston Lane	S	lecdpmdm	Aylestone Drive
269048030	Seaford Road	SW	lecdpmdp	Aylestone Drive
269048031	Glenhills Boulevard	S	lecdpmdt	Aylestone Drive
269048000	Broughton Road	N	lecdmdad	Saffron Lane
269048001	Saffron Way	N	lecdmdag	Saffron Lane

ATCO Code	Stop Name	Bearing	SMS Code	Street Name
269048002	Cyprus Road	N	lecdmdaj	Saffron Lane
269048003	The Fairway	N	lecdmdam	Saffron Lane
269031021	Heathcott Road	N	lecdagwp	Saffron Lane
269031022	Wren Close	N	lecdagwt	Saffron Lane
269031023	Recreation Ground	N	lecdajad	Saffron Lane
269031024	Lansdowne Road	N	lecdajag	Saffron Lane
269031025	Lothair Road	N	lecdajaj	Saffron Lane
269034074	Hawkins Road	N	lecdpdjg	SAFFRON LANE
269034061	Aylestone Road	N	lecdjwjm	Saffron Lane
269034062	Aylestone Road	S	lecdjwjp	Saffron Lane
269034075	Hawkins Road	S	lecdpdjm	SAFFRON LANE
269031026	Lothair Road	S	lecdajam	Saffron Lane
269048004	Recreation Ground	S	lecdpmjw	Saffron Lane
269048005	Wren Close	S	lecdmpa	Saffron Lane
269048006	Heathcott Road	S	lecdmpd	Saffron Lane
269048007	Cyprus Road	S	lecdmpg	Saffron Lane
269048008	Saffron Way	S	lecdmpj	Saffron Lane
269048009	Broughton Road	S	lecdmpm	Saffron Lane
269048017	Southfields Drive	E	lecdadgj	Attlee Way
269048018	Arnesby Crescent	E	lecdadgm	Attlee Way
269048019	Linwood Lane	E	lecdadgp	Attlee Way
269048045	Meadow Gardens	N	lecdpmjt	Windley Road
269048043	Stanton Row	W	lecdpmjm	Brookfield Rise
269048041	Boulder Lane	N	lecdpmjd	The Fairway
269048042	The Crossway	NW	lecdpmjg	The Fairway
269048038	The Fairway	E	lecdpmgt	The Fairway
269048039	The Crossway	E	lecdpmgw	The Fairway
269048040	Boulder Lane	S	lecdpmja	The Fairway
269048044	Stanton Row	E	lecdpmjp	Brookfield Rise
269048046	Meadow Gardens	S	lecdgpag	Windley Road
269048047	Crabtree Corner	S	lecdgpaj	Windley Road
269048048	Elmwood Row	S	lecdgpam	Windley Road
269048063	Windley Road	E	lecdgpp	Stonesby Avenue
269048049	Parvian Road	S	lecdgpap	Glenborne Road
269048050	Durham Drive	S	lecdgpat	Glenborne Road
269048051	Durham Drive	N	lecdgpaw	Glenborne Road
269048052	Parvian Road	N	lecdgpda	Glenborne Road
269048053	Windley Road	W	lecdgpdg	Stonesby Avenue
269048054	Saffron Hill Cemetery	W	lecdgpdj	Stonesby Avenue
269048055	Holy Cross School	W	lecdgpdm	Stonesby Avenue
269048056	Cottagers Close	W	lecdgpdp	Stonesby Avenue
269048057	Library	NW	lecdgpdt	Stonesby Avenue
269048059	Holy Cross School	E	lecdgpga	Stonesby Avenue
269048060	Saffron Hill Cemetery	E	lecdgpdd	Stonesby Avenue
269040039	Saffron Crossroads	S	lecdapjj	Saffron Lane
269048010	Saffron Crossroads	S	lecdadaj	Saffron Lane
269048011	Tenant Road	S	lecdadam	Saffron Lane
269048012	Grant Way	S	lecdadap	Saffron Lane
269040037	Tenant Road	N	lecdapja	Saffron Lane
269040038	Lydall Road	N	lecdapjd	Saffron Lane
260016018	Car Park	W	leiamtwd	Paddock Street
269054045	Highgate Drive	NW	lecdgtpg	Welford Road
269054042	Ramsbury Road	S	lecdgtmw	Shackerdale Road
269054041	Ramsbury Road	N	lecdpawm	Shackerdale Road
269054000	Palmerston Way	NW	lecdmwag	Welford Road
269054016	Lynholme Road	S	lecdmptj	Aberdale Road
269054017	Hylion Road	S	lecdmptm	Aberdale Road
269054014	Hylion Road	N	lecdmwgd	Aberdale Road
269054018	Ferndale Road	W	lecdmptp	Hylion Road
269054011	Lamborne Road	N	lecdmwdt	Lamborne Road
269054012	Woodcroft Avenue	N	lecdmwdw	Lamborne Road
269054023	Northdene Road	E	lecdmpwj	Cairnsford Road
269054021	Northdene Road	W	lecdmpwd	Cairnsford Road
269054022	Lambourne Road	W	lecdmpwg	Cairnsford Road
269054013	Woodcroft Avenue	S	lecdmwga	Lamborne Road
269054019	Ferndale Road	E	lecdmptw	Hylion Road
269054020	Hylion Road	E	lecdmpwa	Hylion Road
269054015	Lynholme Road	N	lecdmptg	Aberdale Road
269054001	Overdale Road	N	lecdmwaj	Welford Road
269054002	Muston Gardens	N	lecdmwam	Welford Road
269054003	Heather Road	N	lecdmwap	Welford Road
269034030	Houlditch Road	N	lecdjwtt	Welford Road
269034031	TA Centre	N	lecdmada	Welford Road
269034032	Westbury Road	NW	lecdmadg	Welford Road
269034033	Welford Road Cemetery	NW	lecdmadj	Welford Road
269034064	Morrison's	SW	lecdjwjt	Counting House Road
269034026	Welford Road Cemetery	SE	lecdjwttg	Welford Road
269034067	University Road	NE	lecdjwmg	University Road
269034068	Wyggeston QE College	NE	lecdjwmj	University Road
269034069	University	NE	lecdjwmp	University Road
269034092	Regent Road	NE	lecdjtgm	University Road
269034070	Adventist Church	SW	lecdjwmt	University Road
269034071	Regent Road	SW	lecdpdgw	University Road
269034072	University	SW	lecdpdja	University Road
269034073	Wyggeston QE College	SW	lecdpdjt	University Road
269034027	University Road	SE	lecdjwtt	Welford Road
269034028	TA Centre	S	lecdjwttm	Welford Road
269034029	Clarendon Park Road	S	lecdjwttp	Welford Road
269054004	Houlditch Road	S	lecdmwat	Welford Road
269054005	Heather Road	S	lecdmwaw	Welford Road
269054006	Chapel Lane	S	lecdmwda	Welford Road
269054007	Muston Gardens	S	lecdmwdg	Welford Road
269054033	Meadvale Road	E	lecdpatj	Overdale Road
269054034	Northfold Road	E	lecdpatm	Overdale Road
269054035	Ashclose Avenue	E	lecdpatp	Meadvale Road
269038016	Shanklin Drive	N	lecdjgpt	Carisbrooke Road
269038017	Carisbrooke Avenue	NW	lecdjgpw	Carisbrooke Road
269054040	Arboretum	N	lecdpawj	Carisbrooke Road
269054039	Northcote Road	N	lecdpawg	Queens Road

ATCO Code	Stop Name	Bearing	SMS Code	Street Name
269034085	Gainsborough Road	N	lecdpdmw	Queens Road
269034086	Clarendon Park Road	N	lecdpdpa	Queens Road
269034087	Howard Road	N	lecdpdpd	Queens Road
269034091	St Marys Road	NE	lecdjtgi	Victoria Park Road
269034082	London Road	NE	lecdpdmj	Victoria Park Road
269038011	London Road	SW	lecdjgpa	Victoria Park Road
269038012	St Marys Road	SW	lecdjgpd	Victoria Park Road
269038013	Howard Road	S	lecdjgpg	Queens Road
269038014	Clarendon Park Road	S	lecdjgpi	Queens Road
269038015	Gainsborough Road	S	lecdjgpm	Queens Road
269038029	Northcote Road	S	lecdpdgd	Queens Road
269038018	Arboretum	S	lecdjgta	Carisbrooke Road
269038019	Carisbrooke Avenue	SE	lecdpawp	Carisbrooke Road
269054046	Ashclose Avenue	W	lecdgtpj	Meadvale Road
269054030	Northfold Road	W	lecdpata	Overdale Road
269054031	Kingsmead Road	W	lecdpatd	Overdale Road
269054032	Meadvale Road	W	lecdpatg	Overdale Road
269054008	Overdale Road	SE	lecdmwdj	Welford Road
269054043	Palmerston Way	S	lecdgtpa	Welford Road
269054044	Highgate Drive	SE	lecdgtpd	Welford Road
260016718	Waitrose	NW	leijmagp	Leicester Road
269038004	Holbrook Road	N	lecdgwta	London Road
269038005	Shirley Road	N	lecdgwtd	London Road
269038006	Guildford Road	NW	lecdjgmg	London Road
269038007	Knighthon Road	NW	lecdjgmj	London Road
269038008	Toller Road	NW	lecdjgmp	London Road
269038009	St Johns Road	N	lecdjgmt	London Road
269038010	Elmfield Avenue	N	lecdjgmw	London Road
269034045	St James Road	NW	lecdgdwj	London Road
269034046	Granville Road	NW	lecdgdwm	London Road
269034047	Saxby Street	N	lecdgdwp	London Road
269034048	Prebend Street	NW	lecdgdwt	London Road
269034049	Station Street	NW	lecdgjad	Waterloo Way
269057043	Leicester Mercury	W	lecdjtpj	St George's Way
269057044	Station Street	SE	lecdjtpm	LONDON ROAD
269057045	Rail Station	SE	lecdjtpw	LONDON ROAD
269057046	Rail Station	SE	lecdjtwa	LONDON ROAD
269057047	Prebend Street	SE	lecdjtwd	London Road
269057048	Saxby Street	S	lecdjtwg	London Road
269057049	Saxby Street	SE	lecdjtwj	London Road
269057051	Hamilton Street	E	lecdjtwp	Evington Road
269049011	St Stephens Road	E	lecdajta	Evington Road
269037003	Glossop Street	E	lecdamwd	Evington Road
269037004	Halsbury Street	E	lecdamwg	EVINGTON ROAD
269037027	Evington Valley Road	NE	lecdmatd	Evington Drive
269037028	Kilworth Drive	E	lecdmatg	Evington Drive
269037029	Mayflower School	E	lecdmatj	Evington Drive
269037025	Mayflower School	S	lecdmapw	Evington Drive
269037026	Kilworth Drive	W	lecdmata	Evington Drive
269037040	Evington Valley Road	W	lecdgwpd	Evington Drive
269051012	Conway Road	W	lecdjama	Evington Road
269051013	Chepstow Road	W	lecdjamd	Evington Road
269051014	Beckingham Road	W	lecdpdpg	Evington Road
269051015	St Stephens Road	W	lecdpdpi	Evington Road
269051016	Hamilton Street	W	lecdpdpm	Evington Road
269051000	Granville Road	SE	lecdjagi	London Road
269051002	St James Road	SE	lecdjagp	London Road
269051003	Elmfield Avenue	SE	lecdjagt	London Road
269051004	St Johns Road	SE	lecdjagw	London Road
269051005	Toller Road	SE	lecdjaja	London Road
269038000	Knighthon Road	SE	lecdgwpi	London Road
269038001	Guildford Road	SE	lecdgwpm	London Road
269038002	Shirley Road	S	lecdgwpt	London Road
269038003	Holbrook Road	SE	lecdgwpw	London Road
269039008	The Cedars	W	lecdgmam	Main Street
269039058	Grocot Road	NW	lecdgtam	Headland Road
269039059	Hexall Road	N	lecdgtap	Headland Road
269039053	Clovelly Road	W	lecdgwpw	Ethel Road
269037020	Plymouth Drive	W	lecdmapd	Ethel Road
269037021	Kedleston Road	W	lecdmapg	Chesterfield Road
269037022	Shiplely Road	W	lecdmapj	Chesterfield Road
269049005	Laurel Road	W	lecdamat	St Peters Road
269057055	Melbourne Road	W	lecdjpwm	St Peter's Road
269057057	Highfield Street	NW	lecdjpwj	Sparkenhoe Street
269057058	Lincoln Street	NW	lecdjtad	Sparkenhoe Street
269057059	Lincoln Street	SE	lecdjtaj	Sparkenhoe Street
269057056	Highfield Street	E	lecdjpwj	St Peter's Road
269049003	Melbourne Road	E	lecdamam	St Peters Road
269049004	Laurel Road	E	lecdamap	St Peters Road
269037023	Shiplely Road	E	lecdmapm	Chesterfield Road
269037024	Kedleston Road	E	lecdmapt	Chesterfield Road
269037038	Plymouth Drive	E	lecdgwmw	Ethel Road
269039054	Clovelly Road	E	lecdgwpw	Ethel Road
269039060	Hexall Road	S	lecdgtat	Headland Road
269039062	Hawthorne Drive	SE	lecdgtad	The Common
269039006	The Cedars	E	lecdgmag	Main Street
269039007	Goodwood Road	NE	lecdgmaj	Main Street
269039009	Mickleton Drive	NE	lecdgmam	Spencefield Lane
269039015	Ingarsby Drive	SE	lecdgmam	Downing Drive
269039016	Barnstable Road	NE	lecdgmdd	Downing Drive
269039017	Chatteris Avenue	NE	lecdgmdd	Downing Drive
269039018	Woodnewton Drive	NE	lecdgmdd	Downing Drive
269039023	Millersdale Avenue	W	lecdpgtm	Welland Vale Road
269039024	Alcester Drive	W	lecdpgtp	Welland Vale Road
269039012	Welland Vale Road	SW	lecdgmdd	Spencefield Lane
269039013	Mickleton Drive	SW	lecdgmdd	Spencefield Lane
269039014	Goodwood Road	SW	lecdgmdd	Spencefield Lane
269039043	Spencefield Drive	N	lecdgmdd	Goodwood Road
269039044	Whitehall Road	N	lecdgmdd	Goodwood Road

ATCO Code	Stop Name	Bearing	SMS Code	Street Name
269039057	Susan Avenue	E	lecdgtaj	Whitehall Road
269039069	Landscape Drive	SE	lecdpjtj	Whitehall Road
269039055	Landscape Drive	NW	lecdgtad	Whitehall Road
269039056	Susan Avenue	NW	lecdgtag	Whitehall Road
269039041	Whitehall Road	S	lecdgmgw	Goodwood Road
269039042	Spencefield Drive	S	lecdgmja	Goodwood Road
269039046	Woodborough Road	W	lecdgmjp	Coleman Road
269039047	Barnes Heath Road	NW	lecdgmjt	Coleman Road
269039049	General Hospital	SW	lecdgmpe	General Hospital Grounds
269039051	General Hospital	NE	lecdgpwj	General Hospital
269039050	General Hospital	SW	lecdgmpe	General Hospital
269036009	General Hospital Drive	E	lecdpajt	Gwendolen Road
269039052	General Hospital Drive	S	lecdgpwm	Wakerley Road
269039063	General Hospital Drive	S	lecdgtdg	Wakerley Road
269037043	Goals Football Centre	S	lecdptjd	Wakerley Road
269035011	Tavistock Drive	S	lecdgwtj	Wakerley Road
269039000	Golf Course	S	lecdpdpj	Stoughton Drive
269051007	Golf Course	N	lecdjajg	Stoughton Drive
269051008	Evington Lane	N	lecdjajm	Stoughton Drive
269037042	Goals Football Centre	N	lecdptja	Wakerley Road
269037008	Crown Hills Avenue	SW	lecdamwt	St Saviour's Road
269037009	Crown Hills Rise	NW	lecdapad	St Saviour's Road
269037010	Benson Street	NW	lecdapag	St Saviour's Road
269037037	Linden Street	S	lecdgwmr	Gedding Road
269037033	Gwendolen Road	S	lecdgwmr	Evington Valley Road
269037034	Chesterfield Road	S	lecdgwmg	Evington Valley Road
269037031	Chesterfield Road	N	lecdgwwj	Evington Valley Road
269037032	Gwendolen Road	N	lecdgwwa	Evington Valley Road
269036007	Crown Hills Rise	SE	lecdpajm	St Saviour's Road
269036008	Crown Hills Avenue	NE	lecdpajp	St Saviour's Road
269036035	Tithe Street	W	lecdampw	Green Lane Road
269035015	Kitchener Road	W	lecdjada	Green Lane Road
269035016	Rosebery Street	W	lecdjadg	Green Lane Road
269035008	Leicester Street	SW	lecdjtmw	East Park Road
269037000	St Saviour's Road	S	lecdamtp	East Park Road
269037001	Blanklyn Avenue	S	lecdamtw	East Park Road
269037002	Cork Street	S	lecdamwa	East Park Road
269037041	Ashover Road	S	lecdgwpj	East Park Road
269049006	Evington Road	N	lecdamaw	East Park Road
269049007	Ashover Road	N	lecdamda	East Park Road
269049008	Cork Street	N	lecdajpm	East Park Road
269049009	Blanklyn Avenue	N	lecdajpt	East Park Road
269035009	St Saviour's Road	NE	lecdjtpe	East Park Road
269035010	Leicester Street	NE	lecdgwtg	East Park Road
269035014	Rosebery Street	SE	lecdgwtw	Green Lane Road
269036033	Kitchener Road	NE	lecdampm	Green Lane Road
269036034	Green Lane Close	NE	lecdampt	Green Lane Road
269036024	Rowlatts Hill Road	E	lecdmagw	Wicklow Drive
269036025	Ambassador Road	E	lecdmaja	Wicklow Drive
269036026	Avoca Close	E	lecdmaja	Wicklow Drive
269036027	Goodwood Road	SE	lecdmajg	Wicklow Drive
269039032	Bayham Close	S	lecdmjap	Davenport Road
269039035	Harringworth Road	SW	lecdmjda	Gamel Road
269039038	Goodwood Crescent	S	lecdgmjm	Goodwood Road
269036010	Coleman Road	N	lecdpajw	Goodwood Road
269036011	Gamel Road	N	lecdpama	Goodwood Road
269039037	Walshe Road	S	lecdmjdi	Goodwood Road
269036012	Walshe Road	N	lecdpamd	Goodwood Road
269036030	Ambassador Road	SE	lecdmajt	Ambassador Road
269036031	Rockingham Close	SE	lecdmajw	Ambassador Road
269036032	Greenacre Drive	E	lecdampj	Ambassador Road
269036028	Greenacre Drive	NW	lecdmajm	Ambassador Road
269036029	Rockingham Close	NW	lecdmajp	Ambassador Road
269036022	Ambassador Road	W	lecdmagp	Wicklow Drive
269036023	Rowlatts Hill Road	W	lecdmagt	Wicklow Drive
269036014	Thorpewell	SE	lecdpamj	Coleman Road
269036015	Devon Way	SE	lecdpamp	Coleman Road
269036016	Ambulance Station	SE	lecdpamt	Coleman Road
269036017	Barnes Heath Road	SE	lecdpamw	Coleman Road
269036018	Woodborough Road	SE	lecdmaga	Coleman Road
269030013	George Street	N	lecdatdj	Belgrave Gate
269030014	Leicester College	N	lecdatdm	BELGRAVE GATE
269030015	Abbey Park Street	N	lecdatdp	Belgrave Road
269030016	Donaldson Road	N	lecdatdt	Belgrave Road
269030017	Law Street	N	lecdjamg	Belgrave Road
269030022	Pasture Lane	E	lecdjapa	Sanvey Gate
269030023	Pasture Lane	W	lecdjapd	Sanvey Gate
269030024	The New Joiners	W	lecdjapj	Sanvey Gate
269030025	St Margaret's Pastures	NW	lecdjapj	St Margaret's Way
269030026	Blackbird Road	N	lecdjapm	Abbey Lane
269030027	Byford Road	N	lecdjapt	Abbey Lane
269030028	Chale Road	NE	lecdjapw	Abbey Lane
269030029	Chale Road	S	lecdjata	Abbey Lane
269030030	Byford Road	S	lecdjatd	Abbey Lane
269030031	St Margaret's Pastures	SE	lecdjatg	St Margarets Way
269030032	Abbey Park Street	NW	lecdjatj	Abbey Park Road
269030033	Abbey Park	NW	lecdjatm	Abbey Park Road
269030034	Abbey Meadows	NW	lecdjatp	Abbey Park Road
269030035	Swithland Avenue	W	lecdjatw	Abbey Park Road
269030036	Abbey Lane	E	lecdjawa	Abbey Park Road
269030037	Swithland Avenue	E	lecdmwgj	Abbey Park Road
269030038	Abbey Meadows	SE	lecdmwgm	Abbey Park Road
269030039	Abbey Park	SE	lecdmwgp	Abbey Park Road
269030040	Abbey Lane	W	lecdmwgt	Beaumont Leys Lane
269030041	Parker Drive	W	lecdmwgw	Beaumont Leys Lane
269030044	B&Q	W	lecdmwjg	Blackbird Road
269030048	Somerset Avenue	SE	lecdmwjw	Parker Drive
269030049	Danbury Drive	NW	lecdmwma	Somerset Avenue
269030050	Wiltshire Road	NW	lecdmwmd	Somerset Avenue

ATCO Code	Stop Name	Bearing	SMS Code	Street Name
269030051	Wiltshire Road	SE	lecdmwmng	Somerset Avenue
269030052	Danbury Drive	SE	lecdmwmj	Somerset Avenue
269030057	Somerset Avenue	N	lecdgaja	Burnham Drive
269030058	Babingley Drive	N	lecdgajd	Burnham Drive
269030059	Babingley Drive	S	lecdgajg	Burnham Drive
269030060	Somerset Avenue	S	lecdgajm	Burnham Drive
269030065	Rossett Drive	E	lecdgamd	Heacham Drive
269030067	Abbey Park Street	SE	lecdjwag	Abbey Park Road
269030068	B&Q	E	lecdjwaj	Blackbird Road
269032000	Boston Road	N	lecdgawj	Bennion Road
269032001	Beaumont Way	N	lecdgawm	Bennion Road
269032002	Heatherbrook Road	N	lecdgawp	Bennion Road
269032007	Heatherbrook Road	S	lecdgdam	Bennion Road
269032008	Beaumont Centre	S	lecdatdw	Bennion Road
269032009	Beaumont Centre	S	lecdatga	Bennion Road
269032010	Beaumont Centre	S	lecdatgd	Bennion Road
269032011	Beaumont Centre	S	lecdatgj	Bennion Road
269032012	Boston Road	S	lecdatgm	Bennion Road
269032014	Beaumont Lodge School	N	lecdatgt	Astill Lodge Road
269032015	Kingsbridge Crescent	NW	lecdatgw	Astill Lodge Road
269032016	Grayswood Drive	W	lecdatja	Astill Lodge Road
269032017	Ipswich Close	SW	lecdatjd	Astill Lodge Road
269032018	Maplewell Drive	SE	lecdatjg	Astill Lodge Road
269032019	Maplewell Drive	NW	lecdatjm	Astill Lodge Road
269032020	Heatherbrook School	N	lecdatjp	Astill Lodge Road
269032021	Ipswich Close	E	lecdmtaj	Astill Lodge Road
269032022	Grayswood Drive	E	lecdmtaj	Astill Lodge Road
269032023	Kingsbridge Crescent	SE	lecdmtam	Astill Lodge Road
269032024	Beaumont Lodge School	SE	lecdmtap	Astill Lodge Road
269032033	Amadis Road	N	lecdmtdw	Orwell Drive
269032034	Amadis Road	S	lecdmtga	Orwell Drive
269032036	Beaumont Centre	N	lecdawaj	Rutherford Road
269032037	Beaumont Centre	N	lecdawam	Rutherford Road
269032044	Butterwick Drive	NW	lecdawdm	Strasbourg Drive
269032045	Farrier Lane	SW	lecdawdp	Strasbourg Drive
269032046	Harris Road	NE	lecdawdt	Strasbourg Drive
269032047	Farrier Lane	NE	lecdawdw	Strasbourg Drive
269032048	Butterwick Drive	E	lecdpgmj	Strasbourg Drive
269032051	Little Wood Close	NE	lecdpgmw	Tilling Road
269032052	Butterwick House	E	lecdppga	Tilling Road
269032053	Little Wood Close	SW	lecdppgd	Tilling Road
269032054	Churchward Avenue	E	lecdpppg	Collett Road
269032055	Churchward Avenue	W	lecdpppj	TILLING ROAD
269032056	Beauville Drive	NW	lecdppgm	Strasbourg Drive
269032057	Lomond Crescent	SW	lecdpgpt	Heacham Drive
269032058	Linney Road	NW	lecdppgw	Heacham Drive
269032059	Baxters Close	NW	lecdppta	Heacham Drive
269032060	Calver Hey Road	NW	lecdpstd	Heacham Drive
269032061	Calver Hey Road	SE	lecdpstd	Heacham Drive
269032062	Baxters Close	SE	lecdmjwg	Heacham Drive
269032063	Linney Road	SE	lecdmjwj	Heacham Drive
269032064	Lomond Crescent	NE	lecdmjwm	Heacham Drive
269032065	Snow Hill	NW	lecdmjwp	Anstey Lane
269032066	Avebury Avenue	N	lecdmjwt	Anstey Lane
269032067	English Martyrs School	NW	lecdmpad	Anstey Lane
269032068	Beaumont Leys School	N	lecdmpag	Anstey Lane
269032069	Milton Crescent Footpath	NW	lecdmpaj	Anstey Lane
269032070	Gorse Hill Hospital	SE	lecdmpam	Anstey Lane
269032071	Glenfrith Way	N	lecdmpap	Anstey Lane
269032072	Gorse Hill Hospital	NW	lecdmpat	Anstey Lane
269032074	Milton Crescent Footpath	SE	lecdgjdm	Anstey Lane
269032075	Beaumont Leys School	S	lecdgdjp	Anstey Lane
269032076	English Martyrs School	SE	lecdgdjt	Anstey Lane
269032077	Avebury Avenue	S	lecdgdjw	Anstey Lane
269032081	Witherdell	NE	lecdgdmj	Calver Hey Road
269032082	Corbet Close	NE	lecdgdmp	Calver Hey Road
269032083	Corbet Close	SW	lecdgdmt	Calver Hey Road
269032084	Witherdell	SW	lecdgdmw	Calver Hey Road
269032085	Hallgate Drive	SW	lecdgdpa	Glenfrith Way
269032088	Hallgate Drive	NE	lecdgdpi	Glenfrith Way
269032090	Humberstone Medical Cent	W	lecdgdpt	WYCOMBE ROAD
269032103	Butterwick House	S	lecdmgpm	Tilling Road
269033000	Red Hill Circle	W	lecdmgta	Red Hill Circle
269033009	Abbey Lane	E	lecdjmgw	Beaumont Leys Lane
269033010	Abbey Lane	NW	lecdjmja	Thurcaston Road
269033011	Abbey Lane	SE	lecdjmjd	Thurcaston Road
269033012	Shirley Street	N	lecdjmjg	Loughborough Road
269033013	Ellis Avenue	NW	lecdjmjm	Loughborough Road
269033014	Shaftesbury Avenue	N	lecdjmjp	Loughborough Road
269033015	Victoria Road North	N	lecdjmjt	Loughborough Road
269033016	Bath Street	N	lecdjmjw	Loughborough Road
269033017	New Bridge	N	lecdjmja	Loughborough Road
269033018	Victoria Road North	S	lecdjimpd	Loughborough Road
269033019	Shirley Street	S	lecdjimpj	Loughborough Road
269033020	Shaftesbury Avenue	S	lecdjmjp	Loughborough Road
269033021	Ellis Avenue	SE	lecdjmpr	Loughborough Road
269033022	Doncaster Road	N	lecdjmpt	Melton Road
269033023	Lexham Street	N	lecdjimpw	Melton Road
269033024	Arbour Road	N	lecdjgaj	Melton Road
269033025	Moores Road	NE	lecdjgam	Melton Road
269033026	Belgrave Police Station	SW	lecdjgap	Melton Road
269033027	Lancashire Street	S	lecdjgat	Melton Road
269033028	Moores Road	S	lecdjgaw	Melton Road
269033029	Arbour Road	S	lecdjgda	Melton Road
269033030	Lexham Street	S	lecdjgdg	Melton Road
269033033	Melton Road	W	lecdjgdp	Marfitt Street
269033034	Melton Road	E	lecdjgdt	Marfitt Street
269033035	Yorkshire Road	E	lecdjgdw	Gipsy Lane
269033036	Rosedale Avenue	NW	lecdjgja	Gipsy Lane

ATCO Code	Stop Name	Bearing	SMS Code	Street Name
269033037	Yorkshire Road	W	lecdjgid	Gipsy Lane
269033038	Purley Road	NE	lecdjgig	Catherine Street
269033039	Watson Road	NE	lecdjgim	Catherine Street
269033040	Barnwell Avenue	SE	lecdjgip	Thurcaston Road
269033042	Talbot Street	SE	lecdjgiw	Thurcaston Road
269033043	Talbot Street	NW	lecdjgma	Thurcaston Road
269033044	Barnwell Avenue	NW	lecdjgmd	Thurcaston Road
269034021	Regent Road	S	lecdjwpm	Welford Road
269035000	Farringdon Street	E	lecdjjiw	Humberstone Road
269035001	Spinney Hill Road	E	lecdjtma	Humberstone Road
269035002	St Barnabas Road	W	lecdjtmd	Uppingham Road
269035003	Overton Road	W	lecdjtmg	Uppingham Road
269035004	Spinney Hill Road	W	lecdjtmj	Humberstone Road
269035005	Farringdon Street	W	lecdjtmp	Humberstone Road
269035019	Lombardy Rise	N	lecdjadp	Forest Road
269035020	Prestwold Road	N	lecdjadt	Forest Road
269035021	Prestwold Road	S	lecdjadw	Forest Road
269035022	Lombardy Rise	S	lecdjaga	Forest Road
269035023	Mereworth Close	W	lecdpdwt	Hastings Road
269036000	Peters Drive	NW	lecdpgaw	Uppingham Road
269036001	Rockery Close	NW	lecdpgda	Uppingham Road
269036002	Humberstone Park	W	lecdpgdg	Uppingham Road
269036003	King Edward Road	W	lecdpgdj	Uppingham Road
269036004	Exton Road	W	lecdpgdm	Uppingham Road
269036005	Kitchener Road	W	lecdpgdp	Uppingham Road
269039061	Grocot Road	SE	lecdgtaw	Headland Road
269040025	Great Meadow Road	NW	lecdapmw	Anstey Lane
269041000	Humberstone Park	E	lecdmwpw	Uppingham Road
269041001	Barbara Avenue	E	lecdmwpd	Scraptoft Lane
269041002	Colchester Road	E	lecdmwpq	Scraptoft Lane
269041003	Thurncourt Road	E	lecdmwpj	Scraptoft Lane
269041004	Hartfield Road	E	lecdmwpm	Scraptoft Lane
269041006	Nursery Road	E	lecdmwpw	Scraptoft Lane
269041007	Greenland Drive	NE	lecdmwta	Tennis Court Drive
269041008	Pine Tree Avenue	NE	lecdmwtd	Tennis Court Drive
269041009	Stanley Drive	N	lecdmwtg	Tennis Court Drive
269041010	Stanley Drive	S	lecdmwjt	Tennis Court Drive
269041011	Pine Tree Avenue	SW	lecdmwtm	Tennis Court Drive
269041012	Greenland Drive	S	lecdmwtp	Tennis Court Drive
269041013	Pine Tree Avenue	S	lecdmwtw	Tennis Court Drive
269041014	Lidster Close	E	lecdpada	Main Street
269041015	Steins Lane	NE	lecdpadg	Main Street
269041016	Steins Lane	W	lecdmdwj	Main Street
269041017	Lidster Close	W	lecdmdwm	Main Street
269041020	Wigley Road	E	lecdmgad	Netherhall Road
269041021	Rosebarn Way	E	lecdmgag	Netherhall Road
269041022	Armdale Drive	E	lecdmgaj	Netherhall Road
269041023	Ivychurch Crescent	E	lecdmgam	Netherhall Road
269041024	Ringwood Road	SE	lecdmgap	Netherhall Road
269041025	Ringwood Road	NW	lecdmgat	Netherhall Road
269041026	Ivychurch Crescent	W	lecdmgaw	Netherhall Road
269041027	Armdale Drive	W	lecdmgda	Netherhall Road
269041028	Rosebarn Way	W	lecdmgdg	Netherhall Road
269041029	Wigley Road	W	lecdmgdj	Netherhall Road
269041030	Bankside	N	lecdmgdm	New Romney Crescent
269041032	Bankside	S	lecdmgdt	New Romney Crescent
269041034	Netherhall Road	N	lecdmgja	Ivychurch Crescent
269041035	Selby Avenue	N	lecdmgjd	Ivychurch Crescent
269041036	Chestnut Avenue	E	lecdmgjg	Keyham Lane
269041039	Hollowtree Road	E	lecdmtgj	Maidenwell Avenue
269041040	Hazeldene Road	N	lecdmtgm	Maidenwell Avenue
269041041	Celandine Road	S	lecdmtgp	Maidenwell Avenue
269041042	Hazeldene Road	S	lecdmtgt	Maidenwell Avenue
269041043	Hollowtree Road	W	lecdmtgw	Maidenwell Avenue
269041044	Columbine Road	S	lecdmtja	Sandhills Avenue
269041046	Hamilton Tesco	N	lecdmpta	Service Road
269041055	Chestnut Avenue	W	lecdmpga	Keyham Lane
269041056	Cranesbill Road	E	lecdmpgd	Preston Rise
269041057	Cranesbill Road	W	lecdmpgj	Preston Rise
269041058	Barry Road	E	lecdmpgm	Keyham Lane West
269041067	Netherhall Road	S	lecdmpjt	Ivychurch Crescent
269041069	Barry Road	W	lecdptgt	Keyham Lane West
269041070	Nursery Road	W	lecdptjp	Scraptoft Lane
269041072	Bakers Way	NE	lecdptja	MAIDENWELL AVENUE
269041073	Bakers Way	SW	lecdptmd	Maidenwell Avenue
269041074	Celandine Road	N	lecdptmg	Maidenwell Avenue
269041075	Bellflower Road	W	lecdptmj	Sandhills Avenue
269041076	Lakeview Chase	W	lecdptmp	Sandhills Avenue
269041077	Lakeview Chase	NE	lecdptmt	Sandhills Avenue
269041078	Shipton Road	SW	lecdptmw	Sandhills Avenue
269041079	Shipton Road	NE	lecdptpa	Sandhills Avenue
269042000	Cobden Street	N	lecdmpma	Catherine Street
269042001	Southey Close	N	lecdmpmd	Catherine Street
269042002	Martin Street	NE	lecdmpmg	Catherine Street
269042003	Surrey Street	NE	lecdmpmj	Catherine Street
269042004	Harrogate Road	NE	lecdmpmp	Catherine Street
269042005	Watson Road	SW	lecdmpmt	Catherine Street
269042006	Purley Road	SW	lecdgamj	Catherine Street
269042007	Harrogate Road	SW	lecdgamp	Catherine Street
269042008	Surrey Street	SW	lecdgamt	Catherine Street
269042009	Martin Street	SW	lecdgamw	Catherine Street
269042010	Southey Close	S	lecdgapa	Catherine Street
269042011	Cobden Street	S	lecdgapd	Catherine Street
269042012	Doncaster Road	S	lecdgapg	Melton Road
269042013	Brandon Street	S	lecdgapj	Belgrave Road
269042015	Dysart Way	S	lecdgapt	Belgrave Road
269043005	Leycroft Road	N	lecdgatm	Beaumont Leys Lane
269043006	Leycroft Road	S	lecdgatp	Beaumont Leys Lane
269043007	Redruth Road	E	lecdpjtm	Bennion Road

ATCO Code	Stop Name	Bearing	SMS Code	Street Name
269043010	Redruth Road	W	lecdpjwa	Bennion Road
269043011	UK Mail	S	lecdpjwd	Knights Road
269043012	Madeline Road	W	lecdpjwg	Knights Road
269043013	UK Mail	N	lecdpjwj	Knights Road
269043014	Belgrave Boulevard	E	lecdpjwm	Red Hill Way
269043015	Belgrave Boulevard	W	lecdpjwp	Redhill Way
269043016	Modbury Avenue	NW	lecdpjwt	Border Drive
269043017	Millwood Close	NW	lecdpmad	Border Drive
269043018	Hadrian Road	W	lecdpmag	Border Drive
269043019	Bewcastle Grove	W	lecdpmaj	Border Drive
269043020	Bewcastle Grove	E	lecdpmam	Border Drive
269043021	Millwood Close	SE	lecdpmap	Border Drive
269043022	Modbury Avenue	SE	lecdpmat	Border Drive
269043023	Cotley Road	W	lecdpmaw	Holderness Road
269043024	Cotley Road	E	lecdpmda	Holderness Road
269043029	Billington Close	N	lecdgpata	Halifax Drive
269043030	Rainsford Crescent	N	lecdgptd	Halifax Drive
269043031	Rainsford Crescent	S	lecdgptg	Halifax Drive
269043032	Billington Close	S	lecdgptj	Halifax Drive
269043033	Hattern Avenue	W	lecdgptm	Marwood Road
269043034	Burdett Way	NW	lecdgptp	Marwood Road
269043035	Wheatley Road	W	lecdgptw	Marwood Road
269043036	Wheatley Road	E	lecdgpwa	Marwood Road
269043037	Burdett Way	SE	lecdgpwd	Marwood Road
269043038	Hattern Avenue	E	lecdgpwg	Marwood Road
269043039	Madeline Road	N	lecdmtjd	Madeline Road
269045051	Ann Street	E	lecdgmtw	Humberstone Road
269045052	Ann Street	W	lecdgmwa	Humberstone Road
269047000	New Bridge	SE	lecdadtj	Loughborough Road
269047001	Bath Street	S	lecdadtm	Loughborough Road
269047003	Lancashire Street	NE	lecdjggt	Melton Road
269047004	Belgrave Police Station	NE	lecdjgfw	Melton Road
269047006	Uxbridge Road	N	lecdjjjd	Melton Road
269047007	Oakland Avenue	N	lecdjjjg	Melton Road
269047008	Sainsbury's	NE	lecdjjjm	Melton Road
269047009	Alderton Close	N	lecdjjjp	Melton Road
269047010	Alderton Close	S	lecdjjjt	Melton Road
269047011	Sainsbury's	S	lecdjjjw	Melton Road
269047012	Oakland Avenue	S	lecdjjma	Melton Road
269047013	Uxbridge Road	SW	lecdjpm	Melton Road
269047018	Badminton Road	N	lecdpadt	Nicklaus Road
269047019	Silverstone Drive	N	lecdpadw	Nicklaus Road
269047020	St Theodores Church	N	lecdpaga	Nicklaus Road
269047022	Trevino Drive	N	lecdpagj	NICKLAUS ROAD
269047025	Badminton Road	S	lecdpagt	Nicklaus Road
269047030	Owen Close	E	lecdmdat	Trevino Drive
269047031	Barnes Close	S	lecdmdaw	Trevino Drive
269047032	Shearer Close	SW	lecdmdga	Trevino Drive
269047033	Huggett Close	W	lecdmdgd	Trevino Drive
269047034	Archer Close	W	lecdmdgj	Trevino Drive
269047035	Braemer Drive	S	lecdmdgm	Gleneagles Avenue
269047036	Dunblane Avenue	S	lecdmdgp	Gleneagles Avenue
269047037	Peebles Way	S	lecdmdgt	Gleneagles Avenue
269047038	Soar Valley College	SE	lecdmdgw	Gleneagles Avenue
269047039	Roseway	SE	lecdmdja	Gleneagles Avenue
269047040	Roseway	NW	lecdmdjd	Gleneagles Avenue
269047041	Soar Valley College	NW	lecdmdjg	Gleneagles Avenue
269047042	Peebles Way	N	lecdmdjm	Gleneagles Avenue
269047043	Dunblane Avenue	N	lecdmdjp	Gleneagles Avenue
269047044	Braemer Drive	NE	lecdmgjp	Gleneagles Avenue
269047050	Rosedale Avenue	E	lecdmatp	Gipsy Lane
269047051	Wyvern Arms	NE	lecdmatw	Barkby Road
269047052	Wyvern Arms	SW	lecdmawa	Barkby Road
269047053	Strathmore Avenue	E	lecdmawd	Wyvern Avenue
269047054	Strathmore Avenue	W	lecdmawg	Wyvern Avenue
269048061	Church Road	W	lecdgpgj	Thurcaston Road
269050024	The Blackbird	W	lecdmtmt	Anstey Lane
269050025	Buckminster Road	W	lecdmtmw	Anstey Lane
269050026	Buckminster Road	E	lecdmtpa	Anstey Lane
269050027	The Blackbird	E	lecdmtpd	Anstey Lane
269050038	Maher Community Centre	NW	lecdmtwp	Ravensbridge Drive
269050039	Maher Community Centre	SE	lecdmtwt	Ravensbridge Drive
269052000	Bowhill Grove	W	lecdgwdg	Scraptoft Lane
269052001	Parkstone Road	W	lecdgwdj	Scraptoft Lane
269052002	Hartfield Road	W	lecdgwdm	Scraptoft Lane
269052003	Thurncourt Road	W	lecdgwdp	Scraptoft Lane
269052005	Barbara Avenue	W	lecdgwdw	Scraptoft Lane
269052006	Rockery Close	SE	lecdgwga	Uppingham Road
269052007	Peters Drive	SE	lecdgwgd	Uppingham Road
269052012	Havencrest Drive	N	lecdgwgw	Colchester Road
269052013	Elmcroft Avenue	N	lecdgwja	Colchester Road
269052016	Elmcroft Avenue	S	lecdgwjm	Colchester Road
269052017	Havencrest Drive	S	lecdgwjp	Colchester Road
269052021	Dakyn Road	W	lecdpgja	Thurncourt Road
269052026	Dakyn Road	E	lecdpgjt	Thurncourt Road
269052030	Dakyn Road	W	lecdpgmg	Dudley Avenue
269052031	Herthull Road	W	lecdgtdm	Dudley Avenue
269052032	Dudley Close	NW	lecdgtmg	Dudley Avenue
269052033	Dudley Close	SE	lecdgtmj	Dudley Avenue
269052034	Somers Road	SE	lecdgtmp	Dudley Avenue
269052035	Herthull Road	E	lecdgtmt	Dudley Avenue
269052036	Dakyn Road	E	lecdgtjm	Dudley Avenue
269052037	Ocean Close	N	lecdgtjp	Ocean Road
269052038	Ocean Close	S	lecdgtjt	Ocean road
269052039	Ocean Road	W	lecdgtjw	Elmcroft Avenue
269052040	Colchester Road	E	lecdgtma	Elmcroft Avenue
269052041	Croyland Green	N	lecdgtjd	Bowhill Grove
269052042	Cross Keys Green	N	lecdgtjg	Bowhill Grove
269052043	Gretna Way	N	lecdgdap	Bowhill Grove

ATCO Code	Stop Name	Bearing	SMS Code	Street Name
269052044	Scraptoft Lane	S	lecdgdlat	Bowhill Grove
269052045	Gretna Way	S	lecdgdaw	Bowhill Grove
269052046	Cross Keys Green	S	lecdgdga	Bowhill Grove
269052047	Croyland Green	S	lecdgdgd	Bowhill Grove
269052048	The Manor	NE	lecdgdgj	Nursery Road
269052049	Briar Road	N	lecdgdgm	Nursery Road
269052050	Chater Close	N	lecdgdgp	Nursery Road
269052057	Scraptoft Lane	N	lecdpgwt	Bowhill Grove
269053001	Overton Road	E	lecdpjag	Uppingham Road
269053002	Sulgrave Road	E	lecdpaj	Uppingham Road
269053003	Kitchener Road	E	lecdpjam	Uppingham Road
269053004	Exton Road	E	lecdpjav	Uppingham Road
269053005	King Edward Road	E	lecdpjat	Uppingham Road
269053006	Turner Road	E	lecdpjaw	Uppingham Road
269053007	Smedmore Road	W	lecdpida	Hastings Road
269053008	Mereworth Close	E	lecdpidg	Hastings Road
269053009	Smedmore Road	E	lecdpidj	Hastings Road
269053010	Portishead Road	N	lecdpidm	Hastings Road
269053011	Braybrooke Road	N	lecdmpw	Victoria Road East
269053012	Braybrooke Road	S	lecdmdta	Victoria Road East
269053013	Portishead Road	S	lecdmtdt	Victoria Road East
269053014	Claydon Road	NW	lecdmtdg	Tailby Avenue
269053022	St Ives Road	N	lecdjmwj	Barkby Road
269053023	Lewisher Road	NE	lecdjmw	Barkby Road
269053024	Rayner Road	NE	lecdjmw	Barkby Road
269053025	Thurmaston Lane	NE	lecdjmw	Barkby Road
269053026	Rayner Road	SW	lecdjpad	Barkby Road
269053027	Lewisher Road	SW	lecdjpag	Barkby Road
269053028	St Ives Road	S	lecdjpaj	Barkby Road
269053035	Claymill Road	NW	lecdjpdj	Humberstone Lane
269053036	The Roundway	N	lecdjpdm	Humberstone Lane
269053038	The Roundway	S	lecdjpd	Humberstone Lane
269053039	Claymill Road	SE	lecdjpdw	Humberstone Lane
269053040	Thurmaston Lane	S	lecdjpga	Humberstone Lane
269053041	The Roundway	E	lecdjggd	The Roundway
269053042	Herricks Avenue	N	lecdjggj	Hill Rise
269053043	The Roundway	S	lecdjggm	Hill Rise
269053067	Waterside Road	W	lecdpjgw	Sandhills Avenue
269053068	Bellflower Road	E	lecdpjma	Sandhills Avenue
269053069	Claydon Road	SE	lecdpjmd	Tailby Avenue
269053072	Herricks Avenue	S	lecdmwad	Hill Rise
269053073	Gipsy Lane	NE	lecdptpg	Victoria Road East
269053074	Gipsy Lane	SW	lecdptpj	Victoria Road East
269053075	Golf Course	W	lecdptpm	Victoria Road East
269055026	Lotus Road	E	lecdjpwg	WYCOMBE ROAD
269055036	Percival Street	W	lecdjtdt	Humberstone Road
269057052	St Peters Road	N	lecdjtw	Melbourne Road
269057053	Donnington Street	N	lecdjwad	Melbourne Road
269057054	Duffield Street	N	lecdjpwj	Melbourne Road
269057060	Cecil Road	NW	lecdjtaj	Nedham Street
269057061	Upper Charnwood Street	NW	lecdjtam	Nedham Street
269057064	Dysart Way	SW	lecdjtaw	Humberstone Road
269057065	Brunswick Street	SW	lecdjtda	Humberstone Road
269057066	Brunswick Street	NE	lecdjtdg	Humberstone Road
269057067	Madras Road	NE	lecdjtdj	Humberstone Road
269057068	Dysart Way	NE	lecdjtdm	Humberstone Road
269057069	Dysart Way	NE	lecdjtdp	Humberstone Road
269057070	Dysart Way	NE	lecdjtdt	Humberstone Road
269057071	Leicester College	S	lecdjdgj	Belgrave Gate
269057072	George Street	S	lecdjdg	Belgrave Gate
269057073	Crafton Street East	SE	lecdjdg	St Matthew's Way
269057074	Manitoba Road	N	lecdjdg	Christow Street
269057075	Manitoba Road	S	lecdjdgw	Christow Street
269057076	Madras Road	E	lecdjdja	Ottawa Road
269057077	Kashmir Road	S	lecdjdjd	Taylor Road
269057078	Kashmir Road	N	lecdjdjg	Taylor Road
260001736	Windsor Street	S	leidpdwt	Windsor Street
260001739	St Mary's Way	N	leidpgaj	St Marys Way
260013971	Fairfield Road	N	leiajtdm	Central Road
260013968	Fairfield Road	S	leiajtdg	Central Road
260007523	Danvers Road	N	leiadwjp	Rothley Road
260007521	Linkfield Road	S	leiajag	Rothley Road
260070135	Rail Station	NE	leijwgmj	Hawley Road
260010402	Rail Station	SW	leijwgmw	Hawley Road
260022616	Market Hall		leijmtmw	Northampton Road
260022615	Market Hall		leijmtm	Northampton Road
269034011	Town Hall Square	NE	lecdagjt	Horsefair Street
269057094	Rail Station	NW	lecdjimp	WATERLOO WAY
269041049	Keyham Lane	N	lecdmpdg	Hungarton Boulevard
269041065	Hamilton Way	W	lecdmpjm	Maidenwell Avenue
269041050	Keyham Lane	S	lecdmpdj	Hungarton Boulevard
269053030	Thurmaston Boulevard	E	lecdjpap	Tron Way
269053029	Thurmaston Boulevard	NW	lecdjpam	Tron Way
269053031	New Star Road	SE	lecdjpat	Thurmaston Lane
269053034	New Star Road	NW	lecdjpdg	Thurmaston Lane
269053033	Progress Way	NW	lecdjpda	Thurmaston Lane
269053032	Progress Way	SE	lecdjpaw	Thurmaston Lane
269033031	Checketts Road	W	lecdjgdj	Checketts Road
269047002	Bellholme Close	E	lecdjgpg	Checketts Road
269033032	Bellholme Close	W	lecdjgdm	Checketts Road
269032030	Tolwell Road	E	lecdmtdm	Leycroft Road
269032025	Tolwell Road	W	lecdmtat	Leycroft Road
269032029	Walkers Crisps	SE	lecdmtdj	Leycroft Road
269032027	Bursom Road	NW	lecdmtda	Leycroft Road
269032028	Bursom Road	SE	lecdmtdg	Leycroft Road
269032005	Leycroft Road	SW	lecdgdag	Bennion Road
269032003	Pinewood Close	NE	lecdgawt	Bennion Road
269032006	Pinewood Close	SW	lecdgdaj	Bennion Road
City Centre - Centreline and other stops, including train station and DMU/LRI				
Stops to be decided				

Annex 8 Bus station facilities

<u>Bus Station Facilities</u>	
<u>Haymarket Bus Station</u>	
Item	Facility
1	23 stands including; 22 local bus drive in reverse out stands + 1 on street drive in drive out stand
2	Enclosed passenger waiting area with seating, paper wayfinding / timetable and real time information provision
3	Public toilets (including disabled and baby changing
4	Changing places facility
5	x2 Driver toilets cubicles
6	LCC staffed information desk
7	Staffed customer facing presence between 07:00 and 22:30 daily
8	Newsagents
9	Shop Mobility
<u>St Margaret's Bus Station</u>	
Item	Facility
1	24 stands including; 17 local bus drive in reverse out stands, 4 side loading platform drive in reverse out coach stands, 2 drive in drive out bus stands, 1 drive in drive out minibus stand.
2	Enclosed passenger waiting area with seating, paper wayfinding / timetable and real time information provision
3	Public toilets (including disabled and baby changing)
4	Changing places facility
5	Tactile floor wayfinding
6	LCC staffed information desk
7	Staffed customer facing presence between 07:00 and 22:30 daily
8	Newsagents
9	Café
10	National Express ticket kiosk
11	Arriva driver restroom and office

Annex 9 Real time information system – maintenance

8. Warranty and Maintenance

8.1. Lots

8.1.1.1. This section of this Specification shall apply to all Lots. That is, Lots 1, 2, 3 and 4.

8.2. Warranty

8.2.1.1. The Contractor shall be entirely responsible for the replacement and repair (making good) of all items supplied under this Contract, replacing and repairing equipment free of charge, subject to the exclusions noted within the Conditions of Contract. Making good shall be taken to mean that ICT equipment is returned to the original, as new, required to operate fully in accordance with the RTI Specification.

8.2.1.2. Subsequent to the end of the Warranty Period, the cost of repairs to equipment supplied under the Contract will be paid for using the unit rates within the associated Price Schedules. The rates in these Price Schedules shall apply in the instance that there is accidental or deliberate damage caused by third parties within the Warranty Period and subsequent to this.

8.3. Faults and Repairs

8.3.1.1. As it is imperative that all elements of the Leicester RTI system work fully and properly to give maximum benefits to public transport users, the speedy rectification of faults and/or repair of damage shall receive special attention from the Contractor. The requirements noted herein apply to all stages of the Contract that is, prior to take-over, during the Warranty Period and during the subsequent maintenance phases of the Contract.

8.3.2. Categorisation of Faults

8.3.2.1. Faults shall be categorised into 4 main types as noted below. Failure shall be defined as an item of equipment or the equipment's software that cannot operate fully to deliver the functions defined within this Specification.

8.3.2.2. Automated fault reporting shall categorise faults for the purposes of monitoring rectification periods. This facility shall be proven during Factory and Site tests.

- i. Critical
- ii. Urgent and Important
- iii. Non Urgent and Important

iv. Non Urgent and/or Not Important

8.3.2.3. Critical faults shall be defined as those that cause directly or indirectly

- i. More than 10 Electronic Signs in bus shelters to fail
- ii. A large interchange sign to fail
- iii. The SMS messaging system to fail
- iv. The requests for priority at traffic signals to fail
- v. The web portal to fail
- vi. The storage of data on the CPS to fail
- vii. The non back-up of data or any of the systems being infected with computer viruses or malicious code

8.3.2.4. Urgent and Important faults shall be defined as those that cause directly or indirectly

- i. More than 5 Electronic Signs in bus shelters signs to fail
- ii. The requests for priority at more than 2 sets of traffic signals on, and within the Leicester Inner Ring Road to fail
- iii. The requests for priority at more than 5 sets of traffic signals outside the Leicester Inner Ring Road to fail
- iv. A travel planning Kiosk to fail
- v. Inability for the Client's staff to access the RTI system functions

8.3.2.5. Non Urgent and Important faults shall be defined as those that cause directly or indirectly

- i. More than 2 Electronic Signs in bus shelters to fail
- ii. The requests for priority at more than 1 set of traffic signals to fail
- iii. One or more Small Information Signs are reported as being damaged or illegible, or the Data Matrix is incorrect or unreadable.

8.3.2.6. Non Urgent and/or Not Important faults shall be defined as faults that do not fall within the categories noted under other categorisations.

8.3.2.7. The classification of the fault conditions shall be the means by which response and rectification times are stipulated and measured, according to the schedule under Clause 8.3.2.11 of this Specification.

8.3.2.8. Attendance shall be defined as the arrival at the point of failure and/or a place where the fault can be identified and rectified, of an appropriately qualified member for the identification of the exact fault condition and who has the tools, training and capability to undertake the necessary remedial actions.

- 8.3.2.9. The rectification of a fault shall be defined as the repair or replacement of equipment or software that allows the item of equipment to work in accordance with the requirements of this Specification. When repairing a fault, it is acceptable, providing the equipment is electrically safe and not causing or allowing any other hazard and that no further damage to that equipment and/or other equipment is so caused, that a temporary rectification is permissible.
- 8.3.2.10. In the instance of a temporary repair, the full and permanent repair shall take place according to the schedule under Clause 8.3.2.11 of this Specification.
- 8.3.2.11. Rectification timescales shall be as noted in the following schedule. For the purposes of fault identification and rectification, working hours are defined as 5am to 4pm Monday to Friday, excepting public holidays relevant to the City of Leicester.

Category of Fault	Time Reported	Maximum Time to Attend Site	Maximum Time to Rectify the Fault	Maximum Time for a Temporary Repair
Critical	Working Hours	2 hours	3 hours	24 hours
Critical	Non Working Hours	3 hours	4 hours	24 hours
Urgent and Important	Working Hours	4 hours	6 hours	48 hours
Urgent and Important	Non Working Hours	4 hours	10 hours	48 hours
Non Urgent and Important	Working Hours	6 hours	12 hours	48 hours
Non Urgent and Important	Non Working Hours	8 hours	12 hours	48 hours

Remaining Faults	Working Hours	8 hours	15 hours	72 hours
Remaining Faults	Non Working Hours	8 hours	24 hours	72 hours

- 8.3.2.12. Maximum Time to attend site is measured from the fault first being reported to the Contractor by manual or automated means.
- 8.3.2.13. Maximum Time to rectify the fault is measured from the fault first being reported to the Contractor by manual or automated means.
- 8.3.2.14. Maximum Time to complete a temporary repair is measured from the time the fault is reported by automatic or manual means and the temporary repair is successfully completed.
- 8.3.2.15. Should faults be caused by the actions of third parties, deliberately or accidentally, the timescales under Clause 8.3.2.11 will apply.

Annex 10 Real time information displays – existing

Real time information displays - Existing	
Contract number:	751
Located at locations below.	
Bus Stops in the Leicester City area (mainly within bus shelters)	
Nos of displays:	115
ATCO Stop Code	Location
269030114	Causeway Lane
269030115	Causeway Lane
269030116	Causeway Lane
269031009	Hall Lane
269031011	Grace Road
269031023	Recreation Ground
269031024	Lansdowne Road
269031025	Lothair Road
269032066	Avebury Avenue
269032076	English Martyrs Sch
269032077	Avebury Avenue
269032096	Glenfield Hospital
269032098	Heathley Park Drive
269033021	Ellis Avenue
269033026	Belgrave Police Sta
269033030	Lexham Street
269034016	Welford Rd EM
269034022	Nelson Mandela Park
269034023	Nelson Mandela Park
269034024	Nelson Mandela Park
269034032	Westbury Road
269034041	Royal Infirmary Hos
269034046	Granville Road
269034047	Saxby Street
269034049	Station Street
269035004	Spinney Hill Road
269035005	Farrington Street
269038008	Toller Road
269039008	The Cedars
269040023	Community Centre
269044002	Aikman Avenue
269044003	Kemp Road
269044004	Kemp Road
269044005	Aikman Avenue
269045000	Braunstone Leisure
269045007	Braunstone Leisure
269046018	Reynolds Place
269047010	Alderton Close
269048001	Saffron Way
269048014	Garden St BL
269050004	Tudor Road
269050008	Pool Road
269050009	Beatrice Road
269050017	Fosse Road Corner
269054045	Highgate Drive
269055000	West Bridge
269055001	Tudor Road
269055010	Equity Road
269056033	Mary Road
269057020	Charles St CA
269057023	Charles St CC
269057025	Charles St CE
269057026	Charles St CF
269057030	Rutland St EK
269057036	Humberstone Gate DD
269057037	Humberstone Gate DE
269057039	Humberstone Gate DG
269057044	Station Street
269057048	Saxby Street
269057049	Saxby Street
269057094	Rail Station
269031021	Heathcott Road
269032099	Darlington Road
269057045	Railway Station
269030029	Chale Road
269034064	Morrison's
269039037	Walshe Road
269057071	Leicester College
269057046	Rail Station
269035003	Overton Road
269032048	Butterwick Drive
269053006	Turner Road
269030009	Orchard Street
269030010	Abbey St BK
269031014	Gas Museum
269031020	Marsden Lane
269032075	Beaumont Leys Schoo
269033029	Arbour Road
269034018	Welford Rd EP
269034040	Walnut Street
269034045	St James Road
269036003	King Edward Road
269038010	Elmfield Avenue
269046006	Jaguar Garage
269046009	Fullhurst Avenue
269055030	Hinckley Road
269056000	Frampton Avenue
269056006	Dovelands School

Annex 11 Real time information displays – new

ANNEX 11				
<u>Real time information displays - Planned</u>				
<u>Located on Bus Stop Totems</u>				
Nos to displays	650			
Locations to be decided from list in Annex 7, focussing on all inbound stops first				

Annex 12 Bus lane enforcement cameras – existing

Bus lanes and gates with camera enforcement system - Existing							
Central Area Facilities bus lanes/gates							
Count	8						
Location	In/Outbound	Detail	Period	Restiction	Enforcement	From	To
Duns Lane	outbound	St Augustines to 30m South	At any time	Bus Gate	Camera enforced	01/04/2022	31/03/2025
Rutland Street	inbound	Entry from Charles Street	At any time	Bus Gate	Camera enforced	01/04/2022	31/03/2025
Charles Street	both	Halford - Rutland	At any time	Bus Lane	Camera enforced	01/04/2022	31/03/2025
Horsefair Street	inbound	Between Maket Place Approach and Granby Street	At any time	Bus Gate	Police and camera enforcement	01/04/2022	31/03/2025
London Road	outbound	Interchange at Station	At any time	Bus Lane	Camera enforced	01/04/2022	31/03/2025
Charles Street	both	Northbound junction with Humberstone Gate	At any time	Bus Gate	Camera enforced	01/04/2022	31/03/2025
Charles Street	both	Southbound junction with Belgrave Gate	At any time	Bus Gate	Camera enforced	01/04/2022	31/03/2025
Causeway Lane	outbound	Westbound junction of East Bond Street	At any time	Bus Gate	Camera enforced	01/04/2022	31/03/2025
Outer area bus facilities (local)							
Location	In/Outbound	Detail	Period	Restiction	Enforcement		
Thurcaston Road	inbound	River Bridge section	At any time	Bus Only Street	Police and Camera enforcement	01/04/2022	31/03/2025
Linear Routes							
count	2						
Location	In/Outbound	Detail	Period	Restiction	Enforcement		
Lutterworth Rd	inbound	City Boundary - north of Gilmorton Avenue	At any time	Bus Lane	Police and camera enforcement	01/04/2022	31/03/2025
Lutterworth Rd	inbound	north of Buckingham Drive - south Marsden Lane	At any time	Bus Lane	Police and camera enforcement	01/04/2022	31/03/2025
ANNEX 13							

Annex 13 Bus lane enforcement cameras – new

Bus lanes and gates with camera enforcement system - Planned								
Location	In/Outbound	Detail	Period	Restiction	Enforcement Planned	Commit to statutory consultation	Implement s.t approval	
count	12							
Groby Road	inbound	Mary Road to Medina Road	At any time	Bus Lane	Camera	31/03/2023	31/03/2025	
Abbey Park Rd	inbound	Opposite Abbey Park Entrance - Belgrave Circle	At any time	Bus Lane	Camera	31/03/2023	31/03/2025	
Abbey Park Rd	outbound	After Canal Bridge – West of Abbey Park Entrance.	At any time	Bus Lane	Camera	31/03/2023	31/03/2025	
St Margarets Way	inbound	Belgrave Circle to Park entrance	At any time	Bus Lane	Camera	31/03/2023	31/03/2025	
St Margarets Way	outbound	Wolsey Street to	At any time	Bus Lane	Camera	31/03/2023	31/03/2025	
Abbey Lane	inbound	Friday St to Wolsey Street	At any time	Bus Lane	Camera	31/03/2023	31/03/2025	
Abbey Lane	inbound	Redhill to 263 Abbey Lane	At any time	Bus Lane	Camera	31/03/2023	31/03/2025	
Abbey Lane	outbound	123 Abbey Lane to Renault garage	At any time	Bus Lane	Camera	31/03/2023	31/03/2025	
Abbey Lane	outbound	186 Abbey Lane to Chale Road	At any time	Bus Lane	Camera	31/03/2023	31/03/2025	
Aspley Lane	inbound	288 Abbey Lane to 362 Abbey Lane	At any time	Bus Lane	Camera	31/03/2023	31/03/2025	
Aspley Lane	outbound	Buckminster Road - opposite Colwell Road	At any time	Bus Lane	Camera	31/03/2023	31/03/2025	
Gorse Hill link	in/outbound	Bennion Rd - Avalon Way	At any time	Bus gate and Lane	Barrier	31/03/2023	31/03/2025	

Annex 14 Mainlines network

Mainlines Network						
Mainlines route group	First	Arriva	Centrebus	S'Coach	Kinch	Cross operator integration
4	yes	no	no	no	no	no
5,5a	no	yes	no	no	no	no
6	no	yes	no	no	no	no
13	yes	no	no	no	no	no
14,14,14a	yes	yes	no	no	no	yes
16	yes	no	no	no	no	no
17	yes	no	no	no	no	no
21	yes	no	no	no	no	no
22,22A, 22B	yes	no	yes	no	no	yes
25,26	yes	no	no	no	no	no
26,27,29	no	yes	no	no	no	no
31,X3,X7	no	yes	no	yes	no	yes
38,38a,53	yes	yes	no	no	no	yes
44,44a	no	yes	no	no	no	no
48,47,49	no	yes	no	no	no	no
55,56	no	yes	no	no	no	no
153,158,48,18	yes	yes	no	yes	no	yes
50,51	no	yes	no	no	no	no
54,54a	yes	no	yes	no	no	yes
58,58a	no	yes	no	no	no	no
74	yes	no	no	no	no	no
84,85	no	yes	no	no	no	no
86,87,88 group	yes	yes	no	no	no	yes
104	no	yes	no	no	no	no
126,127,2	no	yes	no	no	yes	yes

Annex 15 Network branding – council channels

<u>Network Branding - Council channels</u>		
Count	25	
Location	Area	Number
1	All bus totems and bus shelters in City Council area	1025
2	All bus shelters in City Council area - plates	958
3	St Margarets Bus Station:	
	Destination Finder	1
	Where to Board Your Bus	1
	Route Finders	3
	Stop Specific Timetables	23
	Continuing Your Journey	2
4	Haymarket Bus Station:	
	Destination Finder	1
	Where to Board Your Bus	1
	Route Finders	3
	Stop Specific Timetables	23
	Continuing Your Journey	2
	Destination Finder	1
5	City Centre shelters	
	where to board your bus maps	34
	general location maps	16
6	Beaumont Leys Interchange:	
	You Are At (stop letter)	6
	Buses from the Beaumont Centre	1
7	Birstall P&R site	3
8	Enderby P&R site	3
9	Meynells Gorse	3+
10	Leicester Buses website	1
11	Leicester Buses Greater Leicester network map	1
12	Enhanced Partnership promotional publicity	1
13	All Flexi scheme information sets.	tbd
14	All real time information displays	751

Annex 16 Timetable change dates

<u>Registration Dates</u>	
2021/22	
25/04/2021	Summer term starts
11/07/2022	Summer holiday starts
2022/23	
30/08/2022	Autumn term starts
03/01/2023	Spring term starts
17/04/2023	Summer term starts
13/07/2023	Summer Holiday starts
2023/24	
29/08/2023	Autumn term starts
08/01/2024	Spring term starts
08/04/2024	Summer term starts
10/06/2024	Summer Holiday starts
2024/25	
27/08/2024	Autumn term starts
06/01/2025	Spring term starts
28/04/2025	Summer term starts
09/07/2025	Summer Holiday starts

Annex 17 Mainlines – timetable integration

Mainlines - even headways and timetable integration					
Count	8				
Mainlines route group	First	Arriva	Centrebus	S'Coach	Kinch
14,14,14a	yes	yes	no	no	no
22,22A, 22B	yes	no	yes	no	no
31,X3,X7	no	yes	no	yes	no
38,38a,53	yes	yes	no	no	no
153,158,48,18	yes	yes	no	yes	no
54,54a	yes	no	yes	no	no
86,87,88 group	yes	yes	no	no	no
126,127,2	no	yes	no	no	yes

Annex 18 Network branding – operator channels

Network Branding - Operator channels			
Count	8		
1	Single operator printed timetables	All	
2	Single operator maps	All	
3	Single operator fares information	All	
4	Single operator service and route change information	All	
5	Exterior and interior of all EP buses	400	1
6	Bus stop, bus shelter, bus station information	4100	
7	Operator's websites	5	
8	Operator publicity and press releases	All	
1	Only services which have more than 60% of passengers boarding in the Leicester Flexi Scheme area.		

Annex 19 Bus station user agreement

Bus Station Users Agreement

Leicester City Council

2022/23

General

1. This agreement sets out bus station user's rights and responsibilities while using Leicester City Council bus stations, including those at Haymarket and St Margaret's facilities.
2. It is important that this document is read, and that its content is shared with drivers and frontline staff that use the bus station facilities. There is an expectation that operators and their representatives comply with the instructions given to ensure a safe and free flowing operation of the bus station to the benefit of all.
3. This agreement will be reviewed annually.

Traffic Management

Access

4. Only buses, maintenance vehicles, delivery vehicles and emergency service vehicles are permitted to enter the bus station unless prior arrangement has been made with Leicester City Council and a valid permit is displayed.
5. Before any pick up of passengers can be made, Leicester City Council must be notified, either by a service registration in the case of scheduled services, or making contact with the facility manager, found at **Schedule 2** in case of unscheduled services.

Bus Movements

6. Leicester City Council reserves the right to charge for usage of the bus station under the Transport Act 1985, Section 81. Charges for use can be found at **Schedule 1**.
7. A bus movement is considered as;
 - a. Unloading
 - b. Loading
 - c. Layover
 - d. or any combination of the above.
8. Use of the bus station as a turning circle or through route for PSV vehicles is not chargeable, but is subject to all of other conditions as specified in this agreement.

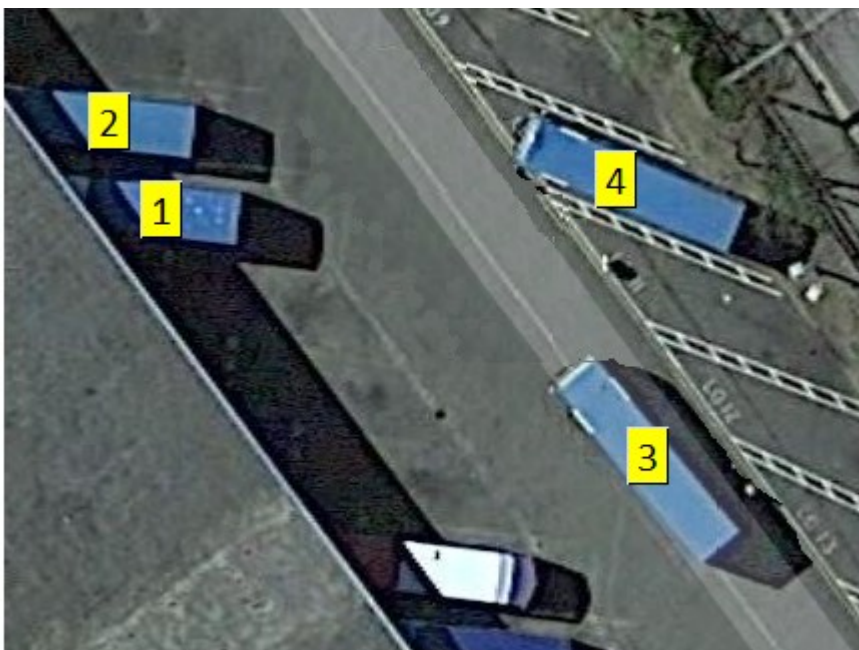
Loading / Unloading

9. Loading must be conducted at the designated stand for the service operated.

10. An exception to this is when the stand is moved temporarily either by prior notification or direction by onsite staff in reaction to an event such as maintenance work or breakdown.
11. Unloading should be made at a designated unloading stand or at the designated stand for the service operated. Unloading can be made at another stand provided that the bus clears the stand immediately after unloading.
12. At no time should loading or unloading be conducted at any place other than a designated stand.
13. Brush barriers are installed at Haymarket bus station. Buses should use these by pulling into the bus stop the normal distance from the kerb. Brushes are attached to prevent damage to the bus if contact is made accidentally. The bus should park so the forward most part of the bus is past the forward brush, and that the bus doors are fully forward of the rear brush. The nature of these barriers means they will occasionally be struck. Damage should be reported to the Customer Service Officer on duty if this happens so repair can be organised.

Reversing.

14. DIRO's or **Drive In Reverse Out** bus stations have additional risk because of regular reversing manoeuvres.
15. Priority goes to reversing vehicles. All other vehicles should give way.
16. Where two or more vehicles are reversing at the same time, vehicles should give way to the near side.
17. Vehicles departing layover bays should give way to main running lanes.
18. Vehicles should reverse back sufficiently to allow them to drive out forward in one movement.



19. In the example above, all vehicles wish to move. Vehicle 1 and 2 want to reverse so have priority, and being on the near side vehicle 1 moves first. Once they have cleared the stand, vehicle 3 moves, and then finally vehicle 4 can safely leave the layover.
20. Remain vigilant for pedestrians at all times. Where pedestrians are trapped on the carriageway side of doors, drivers should load them before departing.

Layover

21. Bus station users are permitted to layover in designated bus layover bays free of charge for up to 15 minutes. Any intention to use a layover for any longer than this must be requested in writing to the facility manager found at **Schedule 2**, for which there may be a charge.
22. Engines must be switched off while the bus is not in use.
23. Drivers must not layover on operational bus stands including alighting only bus stands or bus stops. This includes all City Centre stands within the Leicester inner ring road.
24. At Haymarket bus station, drivers must access the building via the nearest safe route.
25. At St Margaret's bus station drivers must access the building via the nearest safe route. Push buttons are installed on stand doors to aid this.

Parking

26. Non-PSV parking is very limited on bus stations. Parking is by prior agreement only with the facility manager found at **Schedule 2**, for which there may be a charge. There are free coach parking bays by arrangement that can be booked at <https://www.visitleicester.info/good-to-know/coach-parking>

Quitting (Unattended Vehicles)

27. At no time shall a vehicle be left unattended with the engine running. If the driver must leave the bus, it should be isolated.

Speed Limit

28. Speed limits on Leicester City Council bus stations have been set at 10mph. This may be enforced with fixed or portable calibrated speed checking devices.

Stand Allocations

29. Stand Allocations are made taking into account the following;
 - a. Safe operation of the bus station.
 - b. The best customer interest.
 - c. Routing corridors.
 - d. Operator preference.
 - e. Frequency of Service

30. To register a new service departure from a bus station, the operator must have secured permission in writing from the facility manager, including a designated stand. This must be done prior to registration.
31. Any change to an existing service must be done in agreement with the Facility Manager, who will take into account the above considerations. Services that change timetables may be moved stands if the change introduces a risk to the safe running of the bus station.
32. To cancel an existing services departure slot, 30 days notice must be given in writing to the Facility Manager.

Health and Safety

Personal Protective Equipment (PPE)

33. High Visibility clothing should be worn at all times on the carriageway and layover areas. This should meet ENB:471:2003 Class 2 standard in either florescent yellow or orange.
34. Bandit Alarms should only be used if the driver is in distress. It is not acceptable to use the bandit alarm to attract attention in a non-emergency situation.

Reasonable Instructions

35. Bus station users must follow all reasonable instructions of onsite staff.
36. Drivers and operators should respond civilly to onsite staff. Any complaints should be referred to the facility manager rather than engaging in argument.
37. Physical and Verbal abuse of station staff will not be tolerated, and may be reported to the police.

Health and Safety Meetings

38. Operators consent to 3 monthly meetings (or more frequently if required), with the Facility Manager or their representative to discuss health and safety matters arising.
39. Leicester City Council will undertake to provide details of users breaching this agreement to operators so that they might take corrective action within their own policies and frameworks.

Oil / Fuel Spills

40. Bus station users accept responsibility for consequences resulting from an oil spill or similar on a bus station. The priorities should be the prevention of fire, and prevention of harmful chemicals entering the watercourse.
41. Where there has been use of absorbent granules or pads, it is the responsibility of the user to ensure the area is cleaned sufficiently. Leicester City Council reserves the right to recharge cleaning to make good the carriageway if work is not satisfactory.

Damage to Property

42. Where damage has been caused to property, the operator is expected to report this to on site staff.
43. Operators will be held liable for any damage they cause, and may be recharged if repairs are required.

First Aid

44. Site staff include Emergency First Aid at Work trained employee's during peak hours. Staff will support with on bus first aid emergencies in support of drivers if required and requested.

Breakdowns

45. Defective vehicles should not ordinarily be brought onto site with the intention of parking or awaiting tow. Exception may be made on request prior to the vehicle being brought on site.
46. Minor defects may be fixed on station or stand. This is limited to change of ticket machines, replacement wing mirrors, replacement headlights and similar levels of defect.
47. Breakdowns should be notified to onsite staff as soon as possible after they have been identified so they can make alternative arrangements for loading.
48. Hazard lights should be used to signal to other vehicles that the vehicle is defective. If this is not possible due to an electronic fault, a cone should be put behind the vehicle as a signal to other vehicles.
49. Bus operators should resolve to have an engineer on site with defective buses as soon as possible after a breakdown occurs.
50. Buses should be towed during off peak hours. Peak hours are defined as 07:00-09:30 and 15:00-18:00 on weekdays only. Peak hours towing can be conducted with permission of the onsite staff only if they believe it is safe to do so.
51. A representative from the operator should remain with the vehicle at all times unless otherwise agreed with on site staff.
52. Operators will not be liable for a charge for layover in excess of 15 minutes where they are following station staff instructions to postpone towing at peak hours. They may be liable for charge where defective buses are parked on station for a significant time without legitimate cause.

Laws and Regulations

Smoking

53. Bus station users are not permitted to smoke in internal bus station areas, bus shelters and bus station entry and stand doors under the Health Act 2006. Bus station users agree to follow Leicester City Council Policy that their representatives will not use electronic cigarettes inside the building. Designated smoking areas will be set aside for use of staff.

Mobile Phones

54. Bus station users are not permitted to use mobile phones while in control of a vehicle under the Road Vehicles (Construction and use)(Amendment)(No4) Regulations 2003. This includes where the vehicle is stationary, but the engine is still on.

55. Use of fitted two way radios is permitted so long as drivers maintain their concentration.

Insurance and Tax

56. It is expected that bus station users have as a minimum;

- a. Public Liability Insurance (£10million+).
- b. PSV Operators Licence.
- c. Employers Liability Insurance.
- d. Suitable Vehicle Insurance.
- e. Suitable Vehicle Tax.
- f. And any other insurance as required by law.

57. Upon a written request, a copy of these should be supplied to Leicester City Council.

Confidentiality

58. There is an understanding that communications remain confidential between Leicester City Council and operators unless stated otherwise. This includes confidentially surrounding new and amended registrations.

Freedom of Information

59. Leicester City council, as a public body is bound by the Freedom of Information Act 2000. Bus station users agree to assist in any reasonable request that may require a response which requires data on their part in relation to use of the bus station.

Enforcement

60. Any officer or representative of Leicester City Council is empowered to approach bus station users and challenge breaches of this agreement. This may be by either verbal warning or by formally reporting the incident to the relevant operator.

61. Where a formal report is made, it is the operators responsibility to ensure that appropriate action is taken to address the situation and acknowledge receipt of the report.

62. Leicester City Council reserves the right to prevent individuals or operators who repeatedly breach this agreement from using the bus station facilities.

Regulation

63. All vehicles, operators and drivers should be fully compliant with all Operator Licence and Traffic Commissioner Regulations. They are expected to comply with all lawful inspections and investigations conducted by a legitimate authority, including but not limited to;

- a. Police
- b. Traffic Commissioner
- c. Health and Safety Executive
- d. DVSA (Formerly VOSA)

Other Information

Advertising / Leafleting / Canvassing

64. Advertising and similar activities are to be done only with the expressed written permission of the Facility Manager or their representative. There may be a charge for this activity.

65. An exception is made for emergency notices such as short notice withdrawal of services or similar. In this instance, the Facility manager should be informed at the soonest opportunity.

66. Information notices are permitted in timetable cases provided that this is in the public interest. Primacy should be given to keeping the timetables cases for the purpose of bus departure times.

67. Notices should not be affixed to windows or timetable cases by use of sticky tape or glue.

68. On site staff should be notified prior to any notice being displayed.

Lost Property

69. A lost property system will be in place for all left items and luggage at Bus Stations. Items will be retained for at least 30 days.

70. Lost property left on buses or at bus stops outside of the bus station will not be accepted into bus station lost property.

Bus Station Quality Standards

Staffing

71. Customer service staff will be employed on site by Leicester City Council. These staff will remain impartial and give information to customers based on the public interest.
72. Bus station cleaners will be employed on site by Leicester City Council. These staff will be engaged in cleaning the bus station internal and external facilities to ensure they are in good condition for customers and bus station users.
73. Security will be employed on site at times where evidence based study shows that there is a need. Security will be uniformed SIA badge holders.

Availability

74. Bus Stations will be available for use between 05:00 and 23:59 on weekdays
75. Bus Stations will be available for use between 07:00 and 23:59 on Sundays and Bank Holidays (0900 Haymarket).
76. Leicester City Council will aim to respond to requests and correspondence within 7 working days where possible.

Safety

77. Carriageways will be kept free of pedestrian foot traffic as far as is reasonably practicable.
78. CCTV will be in operation to support safety and security.
79. A reporting procedure for accidents and near misses will be in place.
80. A reporting procedure for notifying of breaches of this agreement will be in place

Cleaning and Maintenance

81. Bus Stations will be kept free as reasonably practicable of litter.
82. Carriageways will be kept free as reasonably practicable of oil and fuel.
83. Major safety items will be attended and made safe within 4 hours
84. Minor safety items will be attended with 24 hours
85. All other items will be attended with 7 days.
86. Attendance to an issue does not necessarily amount to a resolution, but reasonable steps having been taken towards this will have been taken.

Schedule 1

Bus Station Charges 2022/23

There is an intention to supply this information in future versions of this agreement. Presently this information remains under current distribution channels

Local Service Departures

Departure Fees per bus			
	2022/3	2023/4	2024/5
Haymarket Bus Station	£ 0.40	£ 0.45	£ 0.50
St Margaret's Bus Station	£ 0.40	£ 0.45	£ 0.50

Other Charges

Car Parking	By negotiation only
Oil / Fuel Spill	At cost
Damage to premises	At cost
Unauthorised use of bus station	At the 1-20 departure rate for every unauthorised service departure

- All charges are subject to the addition of VAT.
- The Transport Act 1985, Section 81 authorises Leicester City Council to make reasonable charges for use of bus station facilities.
- Charges will be invoiced annually in arrears
- Use of the bus station facilities is considered acceptance of these charges.
- Charges will be reviewed annually.

Schedule 2

Bus Station Management

The following contact details should be used in relation to general bus station enquiries.

Team Leader (Public Transport)	David Fenlon	David.Fenlon@Leicester.gov.uk
Transport Development Officer	Amita Miles	Amita.miles@leicester.gov.uk
Haymarket Bus Station		0116 251 5927 (not public facing)
St Margaret's Bus Station		0116 251 1462 (not public facing)
Leicester City Council Customer Services		0116 454 1001

Where you are required to contact the facility manager, contact should be made with the Team Leader (Public Transport), copying in the Transport Development Officers.

Annex 20 Monitoring data – operators

Monitoring Data required from Operators				
Data	Definition	Definition	Frequency	Notes
Passenger Numbers	Boarding in EPS area	Total trips by EPS route	Monthly	
Passenger Numbers	Boarding in EPS area	Fare Payers	Monthly	
Passenger Numbers	Boarding in EPS area	Concessionary ENCTS	Monthly	Elderly and disabled (statutory and discretionary)
Passenger Numbers	Boarding in EPS area	Others	Monthly	Other concessionary
Punctuality	Timing points in EPS area	By EPS route	Monthly	by registration definition (infrequent or frequent)
Punctuality	Timing points in EPS area	All EPS routes	Monthly	by registration definition (infrequent or frequent)
Reliability	Services in EPS area	By EPS route	Monthly	by registration definition
Reliability	Services in EPS area	All EPS routes	Monthly	by registration definition
Operating mileage	EPS area	By EPS route	Quarterly	
Fleet Euro 6	Operating in EPS area	number of buses	Six monthly	
Fleet full electric ULEV	Operating in EPS area	number of buses	Six monthly	
Leicester Buses Logo	Exterior of buses	number of buses	Six monthly	
Leicester Buses Logo	Interior of buses	number of buses	Six monthly	
Leicester Buses Logo	Nos of printed publications	number different types	Six monthly	
Passenger AV displays	Nos of buses	Number per bus	Six monthly	

Annex 21 Targets - current

Enhanced Plan/Scheme: Outcomes and Targets						
Based on funding @ 1 April 2022						
	Actual	Actual	Estimate	Target	Target	Notes
	2018/19	2019/20	2022/3	2024/5	2029/30	
Passenger Numbers	26,483,594	25,625,550	20,500,440	23,370,502	23,370,502	a
Passenger growth from 2022/3				14%	14%	b
Punctuality	76%	68%	70%	75%	75%	c
Modal Share (inner cordon)	29%	30%	28%	29%	29%	d
Modal Share (outer cordon)	6%	7%	6%	6%	6%	d
Passenger Satisfaction :						e
Punctuality/Reliability	72%	65%	70%	75%	75%	
Value for Money	62%	57%	60%	62%	62%	
Journey Time	83%	82%	80%	82%	82%	
Overall	87%	86%	84%	85%	85%	
Proportion of Fleet Electric	0%	0%	18%	33%	33%	f
Notes						
a. Annual nos boarding in Leicester City Area						
b. Estimated post-covid full year base figure. Growth based on funding tables						
c. % of non-frequent service within registration window of tolerance						
d. Modal a share at inner-city cordon point						
e. As measured annually by Transport Focus						
f. In operation						

